

Datasheet for ABIN392666

anti-PACSIN2 antibody (C-Term)

3 Images

10 Publications

[Go to Product page](#)

Overview

Quantity:	400 µL
Target:	PACSIN2
Binding Specificity:	AA 342-371, C-Term
Reactivity:	Human, Mouse
Host:	Rabbit
Clonality:	Polyclonal
Conjugate:	This PACSIN2 antibody is un-conjugated
Application:	Western Blotting (WB), Immunohistochemistry (Paraffin-embedded Sections) (IHC (p))

Product Details

Immunogen:	This PACSIN2 antibody is generated from rabbits immunized with a KLH conjugated synthetic peptide between 342-371 amino acids from the C-terminal region of human PACSIN2.
Clone:	RB3584
Isotype:	Ig Fraction
Purification:	This antibody is purified through a protein A column, followed by peptide affinity purification.

Target Details

Target:	PACSIN2
Alternative Name:	PACSIN2 (PACSIN2 Products)
Background:	PACSIN may play a role in vesicle formation and transport. This protein homo- and hetero-

Target Details

aggregates with other PACSINs. It also binds dynamin 1, synaptojanin, synapsin 1 and the neural Wiskott-Aldrich syndrome protein (N-WASP). The protein exhibits a cytosolic-like cytoplasmic distribution and is ubiquitously expressed. PACSIN is phosphorylated by casein kinase 2 (CK2) and protein kinase C (PKC). The protein contains 1 FCH domain and 1 SH3 domain.

Molecular Weight: 55739

Gene ID: 11252

NCBI Accession: [NP_001171899](#), [NP_001171900](#), [NP_009160](#)

UniProt: [Q9UNF0](#)

Application Details

Application Notes: WB: 1:1000. IHC-P: 1:25. IHC-P: 1:50~100

Restrictions: For Research Use only

Handling

Format: Liquid

Buffer: Purified polyclonal antibody supplied in PBS with 0.09 % (W/V) sodium azide.

Preservative: Sodium azide

Precaution of Use: This product contains Sodium azide: a POISONOUS AND HAZARDOUS SUBSTANCE which should be handled by trained staff only.

Storage: 4 °C, -20 °C

Storage Comment: Maintain refrigerated at 2-8 °C for up to 6 months. For long term storage store at -20 °C in small aliquots to prevent freeze-thaw cycles.

Expiry Date: 6 months

Publications

Product cited in: Abdelalim, Masuda, Tooyama: "Expression of natriuretic peptide-activated guanylate cyclases by cholinergic and dopaminergic amacrine cells of the rat retina." in: **Peptides**, Vol. 29, Issue 4, pp. 622-8, (2008) ([PubMed](#)).

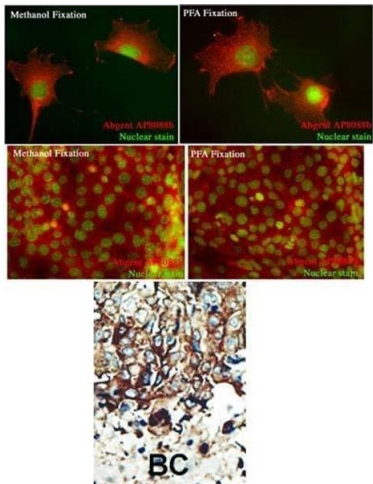
Dams, Van Acker, Gustin, Vereycken, Bunkens, Holemans, Smeulders, Clayton, Ohagen, Hertogs:

"A time-resolved fluorescence assay to identify small-molecule inhibitors of HIV-1 fusion." in:
Journal of biomolecular screening, Vol. 12, Issue 6, pp. 865-74, (2007) ([PubMed](#)).

Tomescot, Leschik, Bellamy, Dubois, Messas, Bruneval, Desnos, Hagège, Amit, Itskovitz,
Menasché, Pucéat: "Differentiation in vivo of cardiac committed human embryonic stem cells in
postmyocardial infarcted rats." in: **Stem cells (Dayton, Ohio)**, Vol. 25, Issue 9, pp. 2200-5, (2007)
([PubMed](#)).

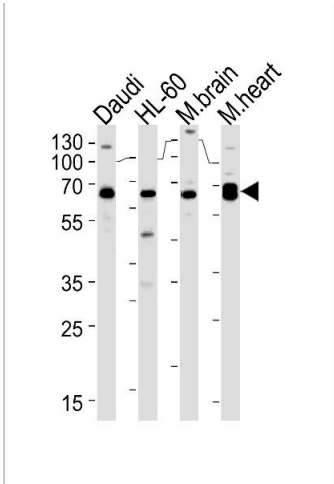
There are more publications referencing this product on: [Product page](#)

Images



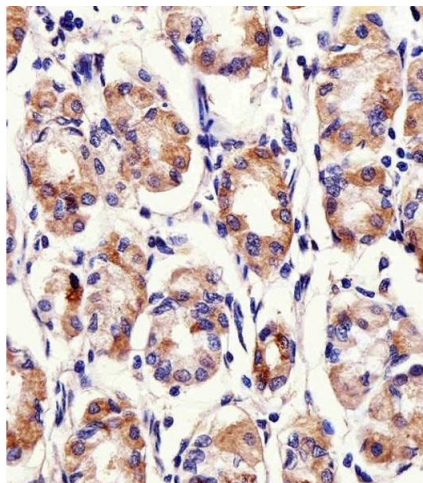
Immunohistochemistry (Paraffin-embedded Sections)

Image 1. Formalin-fixed and paraffin-embedded human cancer tissue reacted with the primary antibody, which was peroxidase-conjugated to the secondary antibody, followed by DAB staining. This data demonstrates the use of this antibody for immunohistochemistry, clinical relevance has not been evaluated. BC = breast carcinoma, HC = hepatocarcinoma.



Western Blotting

Image 2. CSIN2 Antibody (ABIN392666 and ABIN2842164) western blot analysis in Daudi,HL-60 cell line and mouse brain,rat heart lysates (35 µg/lane).This demonstrates the CSIN2 antibody detected the CSIN2 protein (arrow).



Immunohistochemistry (Paraffin-embedded Sections)

Image 3. Immunohistochemical analysis of raffin-embedded H. stomach section using CSIN2 Antibody (C-term) (ABIN392666 and ABIN2842164). (ABIN392666 and ABIN2842164) was diluted at 1:25 dilution. A peroxidase-conjugated goat anti-rabbit IgG at 1:400 dilution was used as the secondary antibody, followed by DAB staining.