

Datasheet for ABIN392673  
**anti-PAPSS2 antibody (C-Term)**



[Go to Product page](#)

2 Images

Overview

Quantity:	400 µL
Target:	PAPSS2
Binding Specificity:	AA 544-574, C-Term
Reactivity:	Human
Host:	Rabbit
Clonality:	Polyclonal
Conjugate:	This PAPSS2 antibody is un-conjugated
Application:	Western Blotting (WB), Immunohistochemistry (Paraffin-embedded Sections) (IHC (p))

Product Details

Immunogen:	This PAPSS2 antibody is generated from rabbits immunized with a KLH conjugated synthetic peptide between 544-574 amino acids from the C-terminal region of human PAPSS2.
Clone:	RB3634
Isotype:	Ig Fraction
Purification:	This antibody is purified through a protein A column, followed by peptide affinity purification.

Target Details

Target:	PAPSS2
Alternative Name:	PAPSS2 ( <a href="#">PAPSS2 Products</a> )
Background:	Three-prime-phosphoadenosine 5-prime-phosphosulfate (PAPS) is the sulfate donor

## Target Details

---

cosubstrate for all sulfotransferase (SULT) enzymes. SULTs catalyze the sulfate conjugation of many endogenous and exogenous compounds, including drugs and other xenobiotics. In humans, PAPS is synthesized from adenosine 5-prime triphosphate (ATP) and inorganic sulfate by 2 isoforms, PAPSS1 and PAPSS2.

Molecular Weight: 69501

Gene ID: 9060

NCBI Accession: [NP\\_001015880](#), [NP\\_004661](#)

UniProt: [O95340](#)

Pathways: [Glycosaminoglycan Metabolic Process](#), [Ribonucleoside Biosynthetic Process](#)

## Application Details

---

Application Notes: WB: 1:1000. IHC-P: 1:50~100

Restrictions: For Research Use only

## Handling

---

Format: Liquid

Buffer: Purified polyclonal antibody supplied in PBS with 0.09 % (W/V) sodium azide.

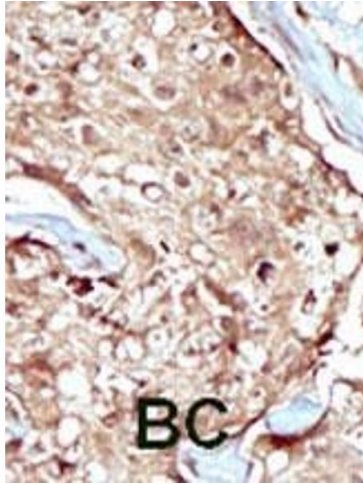
Preservative: Sodium azide

Precaution of Use: This product contains Sodium azide: a POISONOUS AND HAZARDOUS SUBSTANCE which should be handled by trained staff only.

Storage: 4 °C,-20 °C

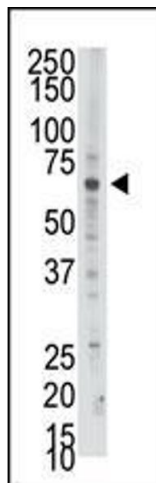
Storage Comment: Maintain refrigerated at 2-8 °C for up to 6 months. For long term storage store at -20 °C in small aliquots to prevent freeze-thaw cycles.

Expiry Date: 6 months



### Immunohistochemistry (Paraffin-embedded Sections)

**Image 1.** Formalin-fixed and paraffin-embedded human cancer tissue reacted with the primary antibody, which was peroxidase-conjugated to the secondary antibody, followed by AEC staining. This data demonstrates the use of this antibody for immunohistochemistry, clinical relevance has not been evaluated. BC = breast carcinoma, HC = hepatocarcinoma.



### Western Blotting

**Image 2.** The anti-PSS2 b (ABIN392673 and ABIN2842166) is used in Western blot to detect PSS2 in Jurkat cell lysate.