



[Go to Product page](#)

Datasheet for ABIN392676
anti-PCK1 antibody (N-Term)

3 Images

Overview

Quantity:	400 µL
Target:	PCK1
Binding Specificity:	AA 40-70, N-Term
Reactivity:	Human, Mouse
Host:	Rabbit
Clonality:	Polyclonal
Conjugate:	This PCK1 antibody is un-conjugated
Application:	Western Blotting (WB), Immunohistochemistry (Paraffin-embedded Sections) (IHC (p))

Product Details

Immunogen:	This PCK1 antibody is generated from rabbits immunized with a KLH conjugated synthetic peptide between 40-70 amino acids from the N-terminal region of human PCK1.
Clone:	RB3644
Isotype:	Ig Fraction
Purification:	This antibody is prepared by Saturated Ammonium Sulfate (SAS) precipitation followed by dialysis against PBS.

Target Details

Target:	PCK1
Alternative Name:	PCK1 (PCK1 Products)

Target Details

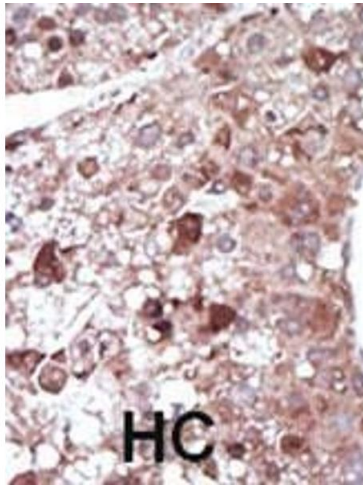
Background:	This gene is a main control point for the regulation of gluconeogenesis. The cytosolic enzyme encoded by this gene, along with GTP, catalyzes the formation of phosphoenolpyruvate from oxaloacetate, with the release of carbon dioxide and GDP. The expression of this gene can be regulated by insulin, glucocorticoids, glucagon, cAMP, and diet. A mitochondrial isozyme of the encoded protein also has been characterized.
Molecular Weight:	69195
Gene ID:	5105
NCBI Accession:	NP_002582
UniProt:	P35558
Pathways:	Positive Regulation of Peptide Hormone Secretion, Carbohydrate Homeostasis

Application Details

Application Notes:	WB: 1:1000. WB: 1:1000. IHC-P: 1:50~100
Restrictions:	For Research Use only

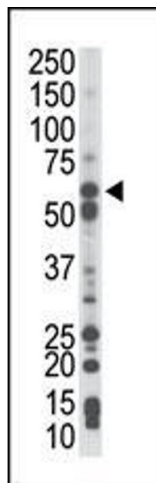
Handling

Format:	Liquid
Buffer:	Purified polyclonal antibody supplied in PBS with 0.09 % (W/V) sodium azide.
Preservative:	Sodium azide
Precaution of Use:	This product contains Sodium azide: a POISONOUS AND HAZARDOUS SUBSTANCE which should be handled by trained staff only.
Storage:	4 °C, -20 °C
Storage Comment:	Maintain refrigerated at 2-8 °C for up to 6 months. For long term storage store at -20 °C in small aliquots to prevent freeze-thaw cycles.
Expiry Date:	6 months



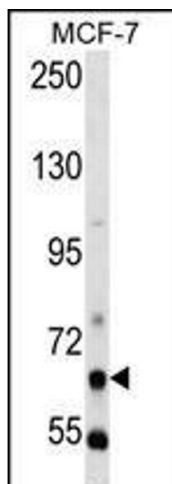
Immunohistochemistry (Paraffin-embedded Sections)

Image 1. Formalin-fixed and paraffin-embedded human cancer tissue reacted with the primary antibody, which was peroxidase-conjugated to the secondary antibody, followed by DAB staining. This data demonstrates the use of this antibody for immunohistochemistry, clinical relevance has not been evaluated. BC = breast carcinoma, HC = hepatocarcinoma.



Western Blotting

Image 2. The anti-PCK1 Pab (ABIN392676 and ABIN2842169) is used in Western blot to detect PCK1 in mouse liver tissue lysate.



Western Blotting

Image 3. PCK1 Antibody (N-term) (ABIN392676 and ABIN2842169) western blot analysis in MCF-7 cell line lysates (35 µg/lane). This demonstrates the PCK1 antibody detected the PCK1 protein (arrow).