



[Go to Product page](#)

Datasheet for ABIN392685
anti-TLK1 antibody (C-Term)

4 Images

1 Publication

Overview

Quantity:	400 µL
Target:	TLK1
Binding Specificity:	AA 720-750, C-Term
Reactivity:	Human
Host:	Rabbit
Clonality:	Polyclonal
Conjugate:	This TLK1 antibody is un-conjugated
Application:	Western Blotting (WB), Immunohistochemistry (Paraffin-embedded Sections) (IHC (p))

Product Details

Immunogen:	This TLK1 antibody is generated from rabbits immunized with a KLH conjugated synthetic peptide between 720-750 amino acids from the C-terminal region of human TLK1.
Clone:	RB3043
Isotype:	Ig Fraction
Purification:	This antibody is prepared by Saturated Ammonium Sulfate (SAS) precipitation followed by dialysis against PBS.

Target Details

Target:	TLK1
Alternative Name:	TLK1 (TLK1 Products)

Target Details

Background:	The Tousled-like kinases, first described in Arabadopsis, are nuclear serine/threonine kinases that are potentially involved in the regulation of chromatin assembly.[supplied by OMIM]
Molecular Weight:	86700
Gene ID:	9874
NCBI Accession:	NP_001130026 , NP_001130027 , NP_036422
UniProt:	Q9UKI8

Application Details

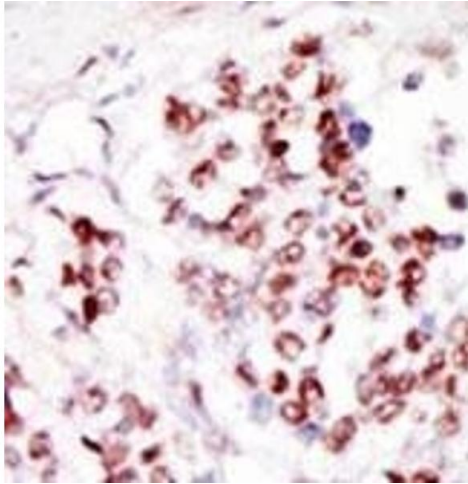
Application Notes:	WB: 1:1000. WB: 1:1000. WB: 1:8000. IHC-P: 1:50~100
Restrictions:	For Research Use only

Handling

Format:	Liquid
Buffer:	Purified polyclonal antibody supplied in PBS with 0.09 % (W/V) sodium azide.
Preservative:	Sodium azide
Precaution of Use:	This product contains Sodium azide: a POISONOUS AND HAZARDOUS SUBSTANCE which should be handled by trained staff only.
Storage:	4 °C,-20 °C
Storage Comment:	Maintain refrigerated at 2-8 °C for up to 6 months. For long term storage store at -20 °C in small aliquots to prevent freeze-thaw cycles.
Expiry Date:	6 months

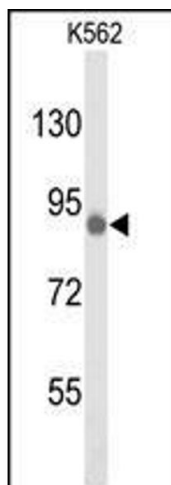
Publications

Product cited in:	Nasr, Mukhopadhyay, Zhang, Katzenstein: "Immunohistochemical markers in diagnosis of papillary thyroid carcinoma: Utility of HBME1 combined with CK19 immunostaining." in: Modern pathology : an official journal of the United States and Canadian Academy of Pathology, Inc , Vol. 19, Issue 12, pp. 1631-7, (2006) (PubMed).
-------------------	--



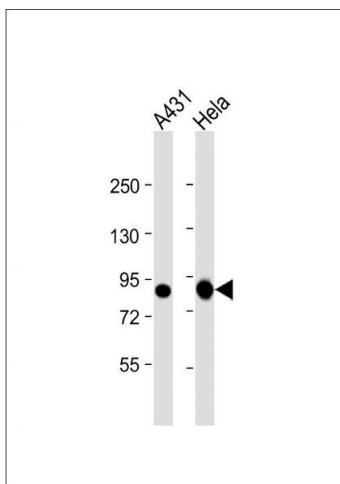
Immunohistochemistry (Paraffin-embedded Sections)

Image 1. Formalin-fixed and paraffin-embedded human cancer tissue reacted with the primary antibody, which was peroxidase-conjugated to the secondary antibody, followed by DAB staining. This data demonstrates the use of this antibody for immunohistochemistry, clinical relevance has not been evaluated. BC = breast carcinoma, HC = hepatocarcinoma.



Western Blotting

Image 2. Western blot analysis of hTLK1- (ABIN392685 and ABIN2842175) in K562 cell line lysates (35 µg/lane). TLK1 (arrow) was detected using the purified Pab.



Western Blotting

Image 3. All lanes : Anti-TLK1 Antibody at 1:1000 dilution
Lane 1: A431 whole cell lysate Lane 2: HeLa whole cell lysate
Lysates/proteins at 20 µg per lane. Secondary Goat Anti-Rabbit IgG, (H+L), Peroxidase conjugated at 1/10000 dilution. Predicted band size : 87 kDa Blocking/Dilution buffer: 5 % NFDm/TBST.

Please check the [product details page](#) for more images. Overall 4 images are available for ABIN392685.