

Datasheet for ABIN392708

anti-EIF2AK1 antibody (AA 267-296)[Go to Product page](#)**2** Images

Overview

Quantity:	400 µL
Target:	EIF2AK1
Binding Specificity:	AA 267-296
Reactivity:	Human
Host:	Rabbit
Clonality:	Polyclonal
Application:	Western Blotting (WB), Immunohistochemistry (Paraffin-embedded Sections) (IHC (p))

Product Details

Immunogen:	This HRI (EIF2AK1) antibody is generated from rabbits immunized with a KLH conjugated synthetic peptide between 267-296 amino acids from the Central region of human HRI (EIF2AK1).
Clone:	RB12521
Isotype:	Ig Fraction
Purification:	This antibody is prepared by Saturated Ammonium Sulfate (SAS) precipitation followed by dialysis against PBS.

Target Details

Target:	EIF2AK1
Alternative Name:	HRI (EIF2AK1) (EIF2AK1 Products)
Background:	The HRI gene is localized to 7p22 where its 3' end slightly overlaps the 3' end of the gene JTV1.

Target Details

The two genes are transcribed from opposite strands. Studies in rat and rabbit suggest that the HRI gene product phosphorylates the alpha subunit of eukaryotic initiation factor 2. Its kinase activity is induced by low levels of heme and inhibited by the presence of heme.

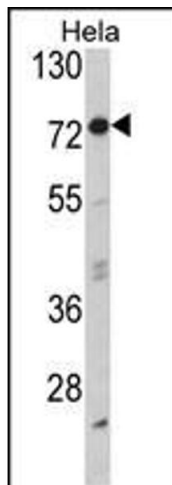
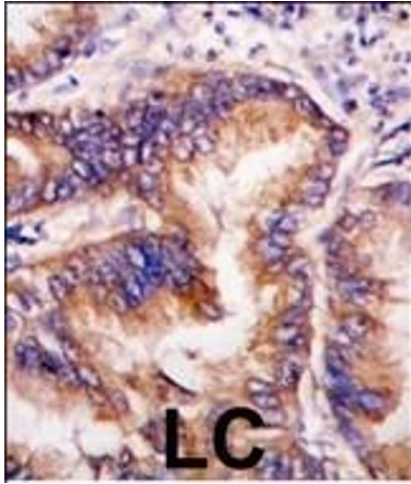
Molecular Weight:	71106
NCBI Accession:	NP_001127807 , NP_055228
UniProt:	Q9BQI3
Pathways:	Hepatitis C

Application Details

Application Notes:	WB: 1:1000. IHC-P: 1:10~50
Restrictions:	For Research Use only

Handling

Format:	Liquid
Buffer:	Purified polyclonal antibody supplied in PBS with 0.09 % (W/V) sodium azide.
Preservative:	Sodium azide
Precaution of Use:	This product contains Sodium azide: a POISONOUS AND HAZARDOUS SUBSTANCE which should be handled by trained staff only.
Storage:	4 °C, -20 °C
Storage Comment:	Maintain refrigerated at 2-8 °C for up to 6 months. For long term storage store at -20 °C.
Expiry Date:	6 months



Immunohistochemistry (Paraffin-embedded Sections)

Image 1. Formalin-fixed and paraffin-embedded human lung carcinoma tissue reacted with EIF2AK1 antibody (Center), which was peroxidase-conjugated to the secondary antibody, followed by DAB staining. This data demonstrates the use of this antibody for immunohistochemistry, clinical relevance has not been evaluated.

Western Blotting

Image 2. Western blot analysis of EIF2AK1 Antibody (Center) (ABIN392708 and ABIN2842185) in HeLa cell line lysates (35 µg/lane). EIF2AK1 (arrow) was detected using the purified Pab.