

Datasheet for ABIN392748
anti-PFKM antibody (N-Term)

2 Images

[Go to Product page](#)

Overview

Quantity:	400 µL
Target:	PFKM
Binding Specificity:	AA 122-151, N-Term
Reactivity:	Human
Host:	Rabbit
Clonality:	Polyclonal
Conjugate:	This PFKM antibody is un-conjugated
Application:	Western Blotting (WB), Immunohistochemistry (Paraffin-embedded Sections) (IHC (p))

Product Details

Immunogen:	This Fructose 6 Phosphate Kinase antibody is generated from rabbits immunized with a KLH conjugated synthetic peptide between 122-151 amino acids from the N-terminal region of human Fructose 6 Phosphate Kinase.
Clone:	RB3905
Isotype:	Ig Fraction
Purification:	This antibody is prepared by Saturated Ammonium Sulfate (SAS) precipitation followed by dialysis against PBS.

Target Details

Target:	PFKM
Alternative Name:	Fructose 6 Phosphate Kinase (PFKM) (PFKM Products)

Target Details

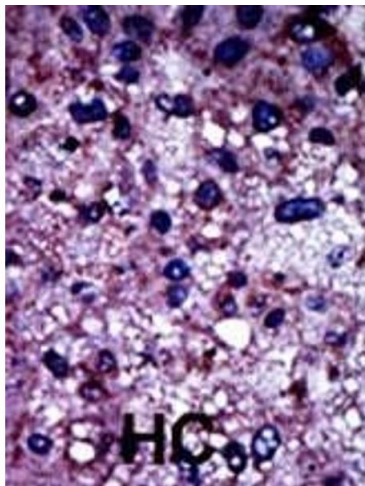
Background:	Phosphofructokinase catalyzes the irreversible conversion of fructose 6 phosphate to fructose 1,6 bisphosphate. Mammalian PFK is a complex isozyme consisting of 3 subunits: muscle (M), liver (L), and platelet (P). Only M type PFK isozyme is expressed in mature muscle, while erythrocytes contain both L and M subunits. Defects in PFKM are the cause of glycogen storage disease type 7 (GSD7), also known as Tarui disease.
Molecular Weight:	85183
Gene ID:	5213
NCBI Accession:	NP_000280 , NP_001160158 , NP_001160159 , NP_001160160
UniProt:	P08237
Pathways:	Positive Regulation of Peptide Hormone Secretion , Negative Regulation of Hormone Secretion , Carbohydrate Homeostasis , Warburg Effect

Application Details

Application Notes:	WB: 1:1000. IHC-P: 1:50~100
Restrictions:	For Research Use only

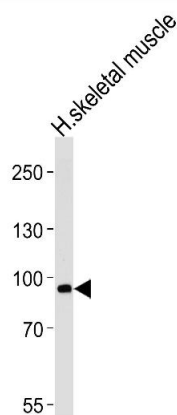
Handling

Format:	Liquid
Buffer:	Purified polyclonal antibody supplied in PBS with 0.09 % (W/V) sodium azide.
Preservative:	Sodium azide
Precaution of Use:	This product contains Sodium azide: a POISONOUS AND HAZARDOUS SUBSTANCE which should be handled by trained staff only.
Storage:	4 °C,-20 °C
Storage Comment:	Maintain refrigerated at 2-8 °C for up to 6 months. For long term storage store at -20 °C in small aliquots to prevent freeze-thaw cycles.
Expiry Date:	6 months



Immunohistochemistry (Paraffin-embedded Sections)

Image 1. Formalin-fixed and paraffin-embedded human cancer tissue reacted with the primary antibody, which was peroxidase-conjugated to the secondary antibody, followed by DAB staining. This data demonstrates the use of this antibody for immunohistochemistry, clinical relevance has not been evaluated. BC = breast carcinoma, HC = hepatocarcinoma.



Western Blotting

Image 2. Western blot analysis of lysate from human skeletal muscle tissue lysate, using PFKM Antibody (ABIN392748 and ABIN2842202). (ABIN392748 and ABIN2842202) was diluted at 1:1000 at each lane. A goat anti-rabbit IgG H&L(HRP) at 1:5000 dilution was used as the secondary antibody. Lysate at 35 µg per lane.