

Datasheet for ABIN392749
anti-PFKM antibody (C-Term)

4 Images

[Go to Product page](#)

Overview

Quantity:	400 µL
Target:	PFKM
Binding Specificity:	AA 746-776, C-Term
Reactivity:	Human
Host:	Rabbit
Clonality:	Polyclonal
Conjugate:	This PFKM antibody is un-conjugated
Application:	Western Blotting (WB), Immunofluorescence (IF), Immunohistochemistry (Paraffin-embedded Sections) (IHC (p))

Product Details

Immunogen:	This Fructose 6 Phosphate Kinase (PFKM) antibody is generated from rabbits immunized with a KLH conjugated synthetic peptide between 746-776 amino acids from the C-terminal region of human Fructose 6 Phosphate Kinase (PFKM).
Clone:	RB3908
Isotype:	Ig Fraction
Predicted Reactivity:	Pr
Purification:	This antibody is prepared by Saturated Ammonium Sulfate (SAS) precipitation followed by dialysis against PBS.

Target Details

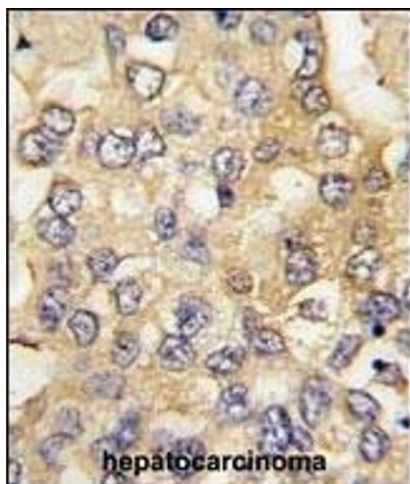
Target:	PFKM
Alternative Name:	Fructose 6 Phosphate Kinase (PFKM) (PFKM Products)
Background:	Phosphofructokinase catalyzes the irreversible conversion of fructose 6 phosphate to fructose 1,6 biphosphate. Mammalian PFK is a complex isozyme consisting of 3 subunits: muscle (M), liver (L), and platelet (P). Only M type PFK isozyme is expressed in mature muscle, while erythrocytes contain both L and M subunits. Defects in PFKM are the cause of glycogen storage disease type 7 (GSD7), also known as Tarui disease.
Molecular Weight:	85183
Gene ID:	5213
NCBI Accession:	NP_000280 , NP_001160158 , NP_001160159 , NP_001160160
UniProt:	P08237
Pathways:	Positive Regulation of Peptide Hormone Secretion , Negative Regulation of Hormone Secretion , Carbohydrate Homeostasis , Warburg Effect

Application Details

Application Notes:	IF: 1:10~50. WB: 1:1000. IHC-P: 1:50~100. IHC-P: 1:50~100
Restrictions:	For Research Use only

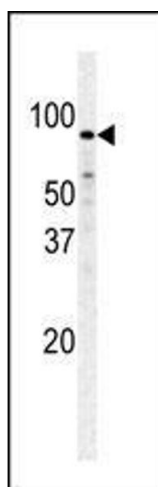
Handling

Format:	Liquid
Buffer:	Purified polyclonal antibody supplied in PBS with 0.09 % (W/V) sodium azide.
Preservative:	Sodium azide
Precaution of Use:	This product contains Sodium azide: a POISONOUS AND HAZARDOUS SUBSTANCE which should be handled by trained staff only.
Storage:	4 °C,-20 °C
Storage Comment:	Maintain refrigerated at 2-8 °C for up to 6 months. For long term storage store at -20 °C in small aliquots to prevent freeze-thaw cycles.
Expiry Date:	6 months



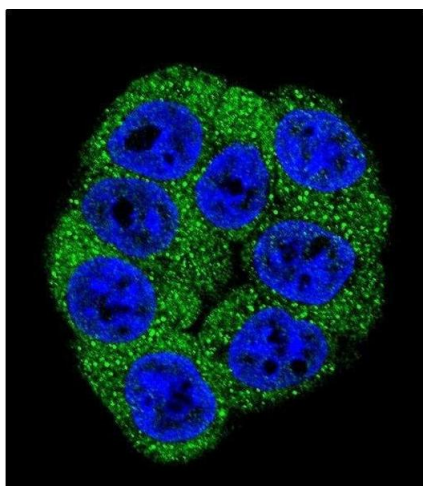
Immunohistochemistry (Paraffin-embedded Sections)

Image 1. Formalin-fixed and paraffin-embedded human hepatocarcinoma tissue reacted with PFKM antibody (C-term), which was peroxidase-conjugated to the secondary antibody, followed by DAB staining. This data demonstrates the use of this antibody for immunohistochemistry, clinical relevance has not been evaluated.



Western Blotting

Image 2. Western blot analysis of PFKM polyclonal antibody (ABIN392749 and ABIN2842203) in Hela cell line lysate. PFKM (arrow) was detected using the purified Pab.



Immunofluorescence

Image 3. Confocal immunofluorescent analysis of Fructose 6 Phosphate Kinase (PFKM) Antibody (C-term) (ABIN392749 and ABIN2842203) with Hela cell followed by Alexa Fluor 488-conjugated goat anti-rabbit IgG (green). DAPI was used to stain the cell nuclear (blue).

Please check the [product details page](#) for more images. Overall 4 images are available for ABIN392749.