



[Go to Product page](#)

Datasheet for ABIN392756

anti-Hexokinase 2 antibody (AA 401-431)

2 Images

Overview

Quantity:	400 µL
Target:	Hexokinase 2 (HK2)
Binding Specificity:	AA 401-431
Reactivity:	Human
Host:	Rabbit
Clonality:	Polyclonal
Conjugate:	This Hexokinase 2 antibody is un-conjugated
Application:	Western Blotting (WB), Immunohistochemistry (Paraffin-embedded Sections) (IHC (p))

Product Details

Immunogen:	This HK2 (Hexokinase II) antibody is generated from rabbits immunized with a KLH conjugated synthetic peptide between 401-431 amino acids from the Central region of human HK2 (Hexokinase II).
Clone:	RB03920
Isotype:	Ig Fraction
Purification:	This antibody is prepared by Saturated Ammonium Sulfate (SAS) precipitation followed by dialysis against PBS.

Target Details

Target:	Hexokinase 2 (HK2)
Alternative Name:	HK2 (Hexokinase II) (HK2 Products)

Target Details

Background: In vertebrates there are four major glucose-phosphorylating isoenzymes, designated hexokinase I, II, III, and IV. Hexokinase is an allosteric enzyme inhibited by its product GLC-6-P. Hexokinase activity is involved in the first step in several metabolic pathways. HK3 is bound to the outer mitochondrial membrane. Its hydrophobic N-terminal sequence may be involved in membrane binding. It is the predominant hexokinase isozyme expressed in insulin-responsive tissues such as skeletal muscle. The N- and C-terminal halves of this hexokinase show extensive sequence similarity to each other. The catalytic activity is associated with the C-terminus while regulatory function is associated with the N-terminus. Although found in NIDDM patients, genetic variations of HK2 do not contribute to the disease.

Molecular Weight: 102380

Gene ID: 3099

NCBI Accession: [NP_000180](#)

UniProt: [P52789](#)

Pathways: [PI3K-Akt Signaling](#), [Carbohydrate Homeostasis](#), [Warburg Effect](#)

Application Details

Application Notes: WB: 1:1000. IHC-P: 1:50~100

Restrictions: For Research Use only

Handling

Format: Liquid

Buffer: Purified polyclonal antibody supplied in PBS with 0.09 % (W/V) sodium azide.

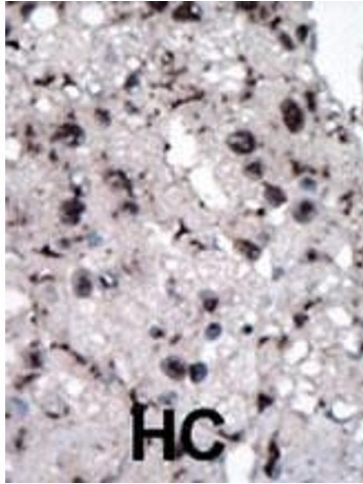
Preservative: Sodium azide

Precaution of Use: This product contains Sodium azide: a POISONOUS AND HAZARDOUS SUBSTANCE which should be handled by trained staff only.

Storage: 4 °C, -20 °C

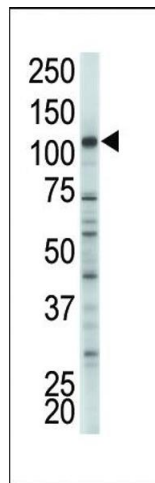
Storage Comment: Maintain refrigerated at 2-8 °C for up to 6 months. For long term storage store at -20 °C in small aliquots to prevent freeze-thaw cycles.

Expiry Date: 6 months



Immunohistochemistry (Paraffin-embedded Sections)

Image 1. Formalin-fixed and paraffin-embedded human cancer tissue reacted with the primary antibody, which was peroxidase-conjugated to the secondary antibody, followed by DAB staining. This data demonstrates the use of this antibody for immunohistochemistry, clinical relevance has not been evaluated. BC = breast carcinoma, HC = hepatocarcinoma.



Western Blotting

Image 2. The anti-HK2 Pab (ABIN392756 and ABIN2842208) is used in Western blot to detect HK2 in cell lysate.