

Datasheet for ABIN392782

**anti-14-3-3 zeta antibody (AA 216-245)****2** Images[Go to Product page](#)

## Overview

Quantity:	400 µL
Target:	14-3-3 zeta (YWHAZ)
Binding Specificity:	AA 216-245
Reactivity:	Human, Mouse
Host:	Rabbit
Clonality:	Polyclonal
Conjugate:	This 14-3-3 zeta antibody is un-conjugated
Application:	Western Blotting (WB), Immunohistochemistry (Paraffin-embedded Sections) (IHC (p))

## Product Details

Immunogen:	This YWHAZ antibody is generated from rabbits immunized with a KLH conjugated synthetic peptide between 216-245 amino acids from human YWHAZ.
Clone:	RB4054
Isotype:	Ig Fraction
Predicted Reactivity:	B, C, Rat, Sh
Purification:	This antibody is prepared by Saturated Ammonium Sulfate (SAS) precipitation followed by dialysis against PBS.

## Target Details

Target:	14-3-3 zeta (YWHAZ)
---------	---------------------

## Target Details

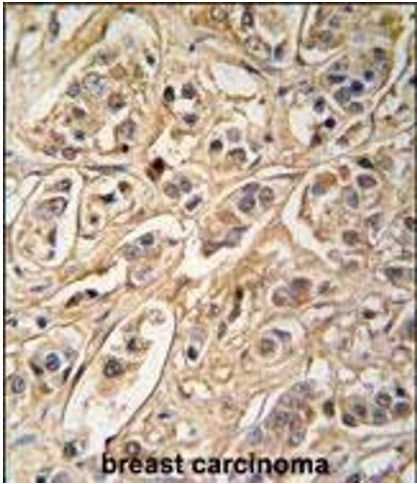
Alternative Name:	YWHAZ-D231 ( <a href="#">YWHAZ Products</a> )
Background:	<p>YWHAZ belongs to the 14-3-3 family of proteins which mediate signal transduction by binding to phosphoserine-containing proteins. This highly conserved protein family is found in both plants and mammals, and this protein is 99 % identical to the mouse, rat and sheep orthologs. The encoded protein interacts with IRS1 protein, suggesting a role in regulating insulin sensitivity. Two transcript variants differing in the 5' UTR, but encoding the same protein, have been identified for the gene. Both variants encode the same protein, however, they are differentially expressed in hematopoietic cells.</p>
Molecular Weight:	27745
Gene ID:	7534
NCBI Accession:	<a href="#">NP_001129171</a> , <a href="#">NP_001129172</a> , <a href="#">NP_001129173</a> , <a href="#">NP_001129174</a> , <a href="#">NP_003397</a> , <a href="#">NP_663723</a>
UniProt:	<a href="#">P63104</a>
Pathways:	<a href="#">Apoptosis</a> , <a href="#">Hormone Transport</a> , <a href="#">Myometrial Relaxation and Contraction</a> , <a href="#">Regulation of Leukocyte Mediated Immunity</a> , <a href="#">Positive Regulation of Immune Effector Process</a> , <a href="#">Synaptic Membrane</a> , <a href="#">Production of Molecular Mediator of Immune Response</a> , <a href="#">Maintenance of Protein Location</a>

## Application Details

Application Notes:	WB: 1:1000. IHC-P: 1:50~100
Restrictions:	For Research Use only

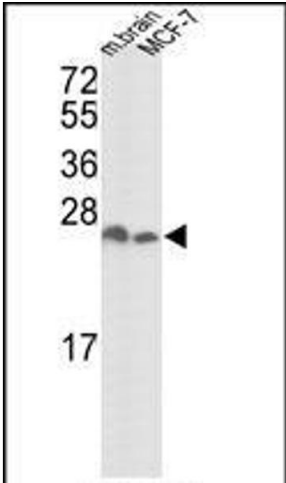
## Handling

Format:	Liquid
Buffer:	Purified polyclonal antibody supplied in PBS with 0.09 % (W/V) sodium azide.
Preservative:	Sodium azide
Precaution of Use:	This product contains Sodium azide: a POISONOUS AND HAZARDOUS SUBSTANCE which should be handled by trained staff only.
Storage:	4 °C, -20 °C
Storage Comment:	Maintain refrigerated at 2-8 °C for up to 6 months. For long term storage store at -20 °C in small aliquots to prevent freeze-thaw cycles.



Immunohistochemistry (Paraffin-embedded Sections)

**Image 1.** Formalin-fixed and paraffin-embedded human breast carcinoma tissue reacted with 14-3-3 protein zeta/delta antibody (C-term) (ABIN392782 and ABIN2842219) , which was peroxidase-conjugated to the secondary antibody, followed by DAB staining. This data demonstrates the use of this antibody for immunohistochemistry, clinical relevance has not been evaluated.



Western Blotting

**Image 2.** Western blot analysis of hYWHAZ- (ABIN392782 and ABIN2842219) in mouse brain tissue and MCF-7 cell line lysates (35 µg/lane). YWHAZ (arrow) was detected using the purified Pab.