

Datasheet for ABIN392790
anti-TRIB3 antibody (C-Term)[Go to Product page](#)

1 Image

Overview

Quantity:	400 µL
Target:	TRIB3
Binding Specificity:	AA 301-331, C-Term
Reactivity:	Human, Mouse
Host:	Rabbit
Clonality:	Polyclonal
Conjugate:	This TRIB3 antibody is un-conjugated
Application:	Western Blotting (WB)

Product Details

Immunogen:	This TRIB3 antibody is generated from rabbits immunized with a KLH conjugated synthetic peptide between 301-331 amino acids from the C-terminal region of human TRIB3.
Clone:	RB4072
Isotype:	Ig Fraction
Purification:	This antibody is prepared by Saturated Ammonium Sulfate (SAS) precipitation followed by dialysis against PBS.

Target Details

Target:	TRIB3
Alternative Name:	TRIB3 (TRIB3 Products)

Target Details

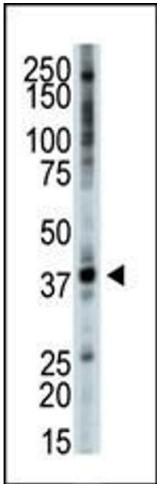
Background:	NPK is a putative protein kinase that is induced by the transcription factor NF-kappaB. The encoded protein is a negative regulator of NF-kappaB and can also sensitize cells to TNF- and TRAIL-induced apoptosis. In addition, this protein can negatively regulate the cell survival serine-threonine kinase AKT1.
Molecular Weight:	39578
Gene ID:	57761
NCBI Accession:	NP_066981
UniProt:	Q96RU7
Pathways:	Fc-epsilon Receptor Signaling Pathway , EGFR Signaling Pathway , Neurotrophin Signaling Pathway , Regulation of Lipid Metabolism by PPARalpha

Application Details

Application Notes:	WB: 1:1000
Restrictions:	For Research Use only

Handling

Format:	Liquid
Buffer:	Purified polyclonal antibody supplied in PBS with 0.09 % (W/V) sodium azide.
Preservative:	Sodium azide
Precaution of Use:	This product contains Sodium azide: a POISONOUS AND HAZARDOUS SUBSTANCE which should be handled by trained staff only.
Storage:	4 °C, -20 °C
Storage Comment:	Maintain refrigerated at 2-8 °C for up to 6 months. For long term storage store at -20 °C in small aliquots to prevent freeze-thaw cycles.
Expiry Date:	6 months



Western Blotting

Image 1. The anti-NPK Pab (ABIN392790 and ABIN2842229) is used in Western blot to detect NPK in mouse skeletal muscle tissue lysate.