

Datasheet for ABIN392797
anti-PLAU antibody (C-Term)



[Go to Product page](#)

4 Images

Overview

Quantity:	400 µL
Target:	PLAU
Binding Specificity:	AA 396-426, C-Term
Reactivity:	Human
Host:	Rabbit
Clonality:	Polyclonal
Conjugate:	This PLAU antibody is un-conjugated
Application:	Western Blotting (WB), Flow Cytometry (FACS), Immunohistochemistry (Paraffin-embedded Sections) (IHC (p)), Immunofluorescence (IF)

Product Details

Immunogen:	This Urokinase (PLAU) antibody is generated from rabbits immunized with a KLH conjugated synthetic peptide between 396-426 amino acids from the C-terminal region of human Urokinase (PLAU).
Clone:	RB04089-04090
Isotype:	Ig Fraction
Purification:	This antibody is prepared by Saturated Ammonium Sulfate (SAS) precipitation followed by dialysis against PBS.

Target Details

Target:	PLAU
---------	------

Target Details

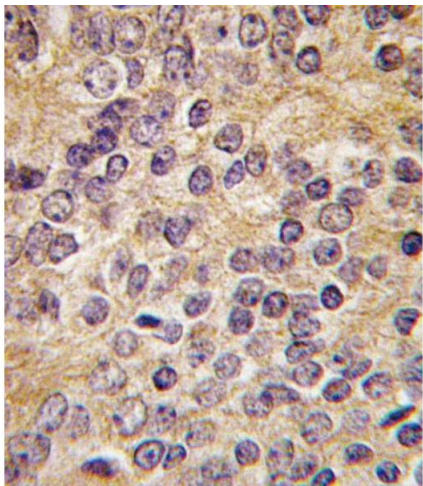
Alternative Name:	Urokinase (PLAU) (PLAU Products)
Background:	<p>PLAU, a member of the peptidase family S1, is a potent plasminogen activator and is clinically used for therapy of thrombolytic disorders. PLAU specifically cleaves the Arg-I-Val bond in plasminogen to form plasmin. The protein is found in high and low molecular mass forms. Each consists of two chains, A and B. The high molecular mass form contains a long chain A. Cleavage occurs after residue 155 in the low molecular mass form to yield a short A1 chain. The protein is used in Pulmonary Embolism (PE) to initiate fibrinolysis. Structurally, PLAU contains 1 EGF-like domain and 1 kringle domain.</p>
Molecular Weight:	48507
Gene ID:	5328
NCBI Accession:	NP_001138503 , NP_002649
UniProt:	P00749
Pathways:	Cellular Response to Molecule of Bacterial Origin , Carbohydrate Homeostasis , Autophagy , Smooth Muscle Cell Migration

Application Details

Application Notes:	IF: 1:10~50. WB: 1:1000. IHC-P: 1:10~50. FC: 1:10~50
Restrictions:	For Research Use only

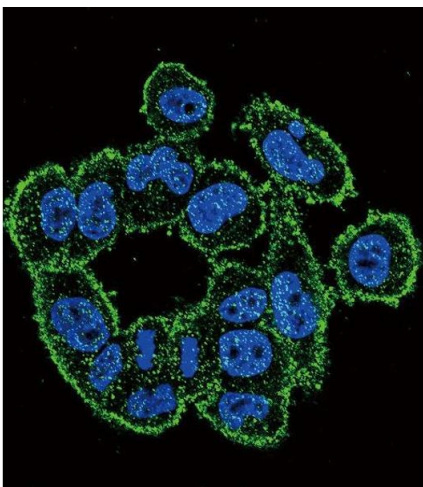
Handling

Format:	Liquid
Buffer:	Purified polyclonal antibody supplied in PBS with 0.09 % (W/V) sodium azide.
Preservative:	Sodium azide
Precaution of Use:	This product contains Sodium azide: a POISONOUS AND HAZARDOUS SUBSTANCE which should be handled by trained staff only.
Storage:	4 °C,-20 °C
Storage Comment:	Maintain refrigerated at 2-8 °C for up to 6 months. For long term storage store at -20 °C in small aliquots to prevent freeze-thaw cycles.
Expiry Date:	6 months



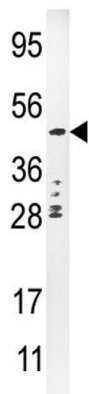
Immunohistochemistry (Paraffin-embedded Sections)

Image 1. Formalin-fixed and paraffin-embedded human prostate carcinoma tissue reacted with PLAU antibody (C-term), which was peroxidase-conjugated to the secondary antibody, followed by DAB staining. This data demonstrates the use of this antibody for immunohistochemistry, clinical relevance has not been evaluated.



Immunofluorescence

Image 2. Confocal immunofluorescent analysis of Urokinase (PLAU) Antibody (C-term) (ABIN392797 and ABIN2842234) with cell followed by Alexa Fluor 488-conjugated goat anti-rabbit IgG (green). DAPI was used to stain the cell nuclear (blue).



Western Blotting

Image 3. Western blot analysis of anti-PLAU Pab (ABIN392797 and ABIN2842234) in CEM cell line lysate (35 µg/lane). PLAU(arrow) was detected using the purified Pab

Please check the [product details page](#) for more images. Overall 4 images are available for ABIN392797.