

Datasheet for ABIN392806

**anti-GUCY1B3 antibody (AA 589-619)**[Go to Product page](#)**1** Image

## Overview

Quantity:	400 µL
Target:	GUCY1B3
Binding Specificity:	AA 589-619
Reactivity:	Human
Host:	Rabbit
Clonality:	Polyclonal
Conjugate:	This GUCY1B3 antibody is un-conjugated
Application:	Western Blotting (WB)

## Product Details

Immunogen:	This GUCY1B3 antibody is generated from rabbits immunized with a KLH conjugated synthetic peptide selected between 589-619 amino acids of human GUCY1B3.
Clone:	RB7767
Isotype:	Ig Fraction
Purification:	This antibody is prepared by Saturated Ammonium Sulfate (SAS) precipitation followed by dialysis against PBS.

## Target Details

Target:	GUCY1B3
Alternative Name:	Guanylyl Cyclase beta 1 (GUCY1B3) ( <a href="#">GUCY1B3 Products</a> )

## Target Details

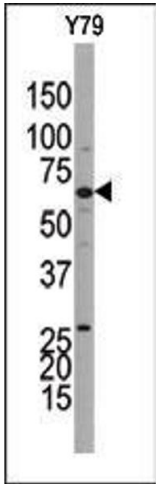
Background:	Soluble guanylate cyclase (sGC), a heterodimeric protein consisting of an alpha and a beta subunit, catalyzes the conversion of GTP to the second messenger cGMP and functions as the main receptor for nitric oxide and nitrovasodilator drugs.
Molecular Weight:	70514
Gene ID:	2983
NCBI Accession:	<a href="#">NP_000848</a>
UniProt:	<a href="#">Q02153</a>
Pathways:	<a href="#">Transition Metal Ion Homeostasis</a>

## Application Details

Application Notes:	WB: 1:1000
Restrictions:	For Research Use only

## Handling

Format:	Liquid
Buffer:	Purified polyclonal antibody supplied in PBS with 0.09 % (W/V) sodium azide.
Preservative:	Sodium azide
Precaution of Use:	This product contains Sodium azide: a POISONOUS AND HAZARDOUS SUBSTANCE which should be handled by trained staff only.
Storage:	4 °C,-20 °C
Storage Comment:	Maintain refrigerated at 2-8 °C for up to 6 months. For long term storage store at -20 °C in small aliquots to prevent freeze-thaw cycles.
Expiry Date:	6 months



Western Blotting

**Image 1.** Western blot analysis of anti-GUCY1B3 Pab((ABIN392806 and ABIN2842242)) in Y79 cell line lysate. GUCY1B3(arrow) was detected using the purified Pab.