

Datasheet for ABIN392808
anti-MAGI1 antibody (C-Term)

2 Images

[Go to Product page](#)

Overview

Quantity:	400 µL
Target:	MAGI1
Binding Specificity:	AA 1227-1256, C-Term
Reactivity:	Human
Host:	Rabbit
Clonality:	Polyclonal
Conjugate:	This MAGI1 antibody is un-conjugated
Application:	Western Blotting (WB), Immunohistochemistry (Paraffin-embedded Sections) (IHC (p))

Product Details

Immunogen:	This BAIAP1 (MAGI1) antibody is generated from rabbits immunized with a KLH conjugated synthetic peptide between 1227-1256 amino acids from the C-terminal region of human BAIAP1 (MAGI1).
Clone:	RB2066
Isotype:	Ig Fraction
Predicted Reactivity:	Rat
Purification:	This antibody is prepared by Saturated Ammonium Sulfate (SAS) precipitation followed by dialysis against PBS.

Target Details

Target:	MAGI1
---------	-------

Target Details

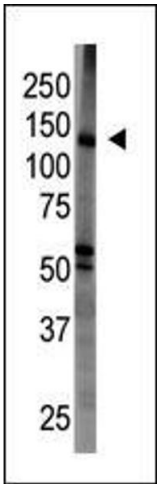
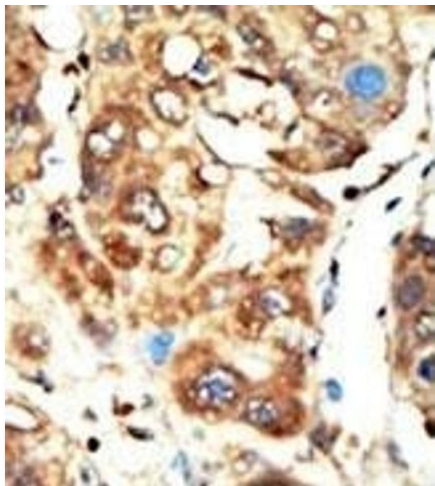
Alternative Name:	BAIAP1 (MAGI1) (MAGI1 Products)
Background:	BAIAP1 is a member of the membrane-associated guanylate kinase homologue (MAGUK) family. Characterized by two WW domains, a guanylate kinase domain, and five PDZ domains, this protein interacts with the cytoplasmic region of BAI1. Together, these proteins may play a role in cell adhesion and signal transduction.
Gene ID:	9223
NCBI Accession:	NP_001028229 , NP_004733 , NP_056335

Application Details

Application Notes:	WB: 1:1000. IHC-P: 1:50~100
Restrictions:	For Research Use only

Handling

Format:	Liquid
Buffer:	Purified polyclonal antibody supplied in PBS with 0.09 % (W/V) sodium azide.
Preservative:	Sodium azide
Precaution of Use:	This product contains Sodium azide: a POISONOUS AND HAZARDOUS SUBSTANCE which should be handled by trained staff only.
Storage:	4 °C, -20 °C
Storage Comment:	Maintain refrigerated at 2-8 °C for up to 6 months. For long term storage store at -20 °C in small aliquots to prevent freeze-thaw cycles.
Expiry Date:	6 months



Immunohistochemistry (Paraffin-embedded Sections)

Image 1. Formalin-fixed and paraffin-embedded human cancer tissue reacted with the primary antibody, which was peroxidase-conjugated to the secondary antibody, followed by AEC staining. This data demonstrates the use of this antibody for immunohistochemistry, clinical relevance has not been evaluated. BC = breast carcinoma, HC = hepatocarcinoma.

Western Blotting

Image 2. The anti-BAI Pab (ABIN392808 and ABIN2842243) is used in Western blot to detect BAI in mouse brain tissue lysate.