

Datasheet for ABIN392815

anti-Choline Kinase alpha antibody (C-Term)[Go to Product page](#)**1** Image**1** Publication

Overview

Quantity:	400 µL
Target:	Choline Kinase alpha (CHKA)
Binding Specificity:	AA 427-457, C-Term
Reactivity:	Human
Host:	Rabbit
Clonality:	Polyclonal
Conjugate:	This Choline Kinase alpha antibody is un-conjugated
Application:	Western Blotting (WB)

Product Details

Immunogen:	This Choline kinase alpha (CHK) antibody is generated from rabbits immunized with a KLH conjugated synthetic peptide between 427-457 amino acids from the C-terminal region of human Choline kinase alpha (CHK).
Clone:	RB5497
Isotype:	Ig Fraction
Purification:	This antibody is prepared by Saturated Ammonium Sulfate (SAS) precipitation followed by dialysis against PBS.

Target Details

Target:	Choline Kinase alpha (CHKA)
Alternative Name:	Choline kinase alpha (CHK) (CHKA Products)

Target Details

Background:	The major pathway for the biosynthesis of phosphatidylcholine occurs via the CDP-choline pathway. Choline kinase alpha is the initial enzyme in the sequence and may play a regulatory role. This protein also catalyzes the phosphorylation of ethanolamine. The antibody for this protein recognizes both isoforms.
Molecular Weight:	52249
Gene ID:	1119
NCBI Accession:	NP_001268 , NP_997634
UniProt:	P35790

Application Details

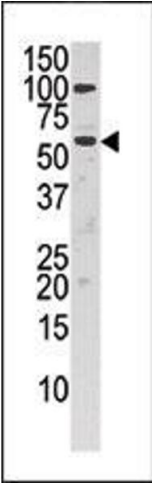
Application Notes:	WB: 1:1000
Restrictions:	For Research Use only

Handling

Format:	Liquid
Buffer:	Purified polyclonal antibody supplied in PBS with 0.09 % (W/V) sodium azide.
Preservative:	Sodium azide
Precaution of Use:	This product contains Sodium azide: a POISONOUS AND HAZARDOUS SUBSTANCE which should be handled by trained staff only.
Storage:	4 °C,-20 °C
Storage Comment:	Maintain refrigerated at 2-8 °C for up to 6 months. For long term storage store at -20 °C in small aliquots to prevent freeze-thaw cycles.
Expiry Date:	6 months

Publications

Product cited in:	Zhang, Chen, Yang, Li, Bao, Wu, Jiang: "CHKA mediates the poor prognosis of lung adenocarcinoma and acts as a prognostic indicator." in: Oncology letters , Vol. 12, Issue 3, pp. 1849-1853, (2016) (PubMed).
-------------------	--



Western Blotting

Image 1. Western blot analysis of anti-CHK (ABIN392815 and ABIN2842246) in HepG2 cell line lysate (35 μ g/lane).CHK(arrow) was detected using the purified Pab.