

Datasheet for ABIN392820
anti-TRPM8 antibody (AA 521-552)[Go to Product page](#)

3 Images

Overview

Quantity:	400 µL
Target:	TRPM8
Binding Specificity:	AA 521-552
Reactivity:	Human
Host:	Rabbit
Clonality:	Polyclonal
Conjugate:	This TRPM8 antibody is un-conjugated
Application:	Western Blotting (WB), Immunohistochemistry (Paraffin-embedded Sections) (IHC (p))

Product Details

Immunogen:	This TRPM8 antibody is generated from rabbits immunized with a KLH conjugated synthetic peptide between 521-552 amino acids from the Central region of human TRPM8.
Clone:	RB14417
Isotype:	Ig Fraction
Purification:	This antibody is purified through a protein A column, followed by peptide affinity purification.

Target Details

Target:	TRPM8
Alternative Name:	TRPM8 (TRPM8 Products)
Background:	TRPM8 is a receptor-activated non-selective cation channel involved in detection of sensations

Target Details

such as coolness, by being activated by cold temperature below 25 degrees Celsius. It is activated by icilin, eucalyptol, menthol, cold and modulation of intracellular pH and involved in menthol sensation. It is permeable for monovalent cations sodium, potassium, and cesium and divalent cation calcium.

Molecular Weight: 127685

Gene ID: 79054

NCBI Accession: [NP_076985](#)

UniProt: [Q7Z2W7](#)

Application Details

Application Notes: WB: 1:1000. WB: 1:1000. IHC-P: 1:10~50

Restrictions: For Research Use only

Handling

Format: Liquid

Buffer: Purified polyclonal antibody supplied in PBS with 0.09 % (W/V) sodium azide.

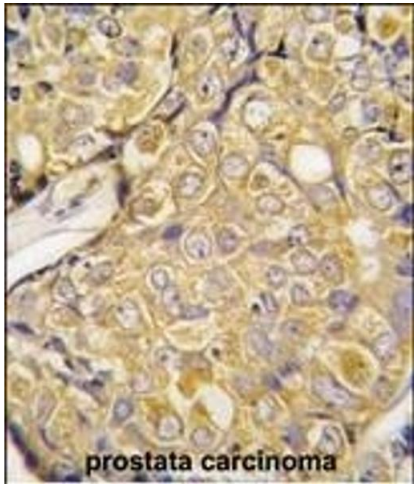
Preservative: Sodium azide

Precaution of Use: This product contains Sodium azide: a POISONOUS AND HAZARDOUS SUBSTANCE which should be handled by trained staff only.

Storage: 4 °C, -20 °C

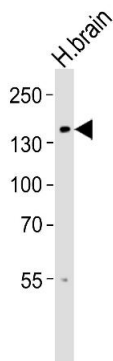
Storage Comment: Maintain refrigerated at 2-8 °C for up to 6 months. For long term storage store at -20 °C in small aliquots to prevent freeze-thaw cycles.

Expiry Date: 6 months



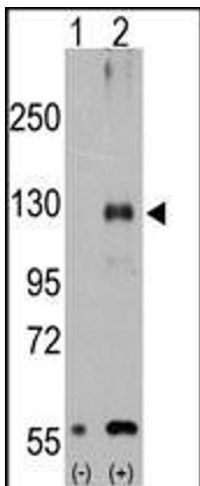
Immunohistochemistry (Paraffin-embedded Sections)

Image 1. Formalin-fixed and paraffin-embedded human prostata carcinoma tissue reacted with TR antibody (Center) (ABIN392820 and ABIN2842252) , which was peroxidase-conjugated to the secondary antibody, followed by DAB staining. This data demonstrates the use of this antibody for immunohistochemistry, clinical relevance has not been evaluated.



Western Blotting

Image 2. Western blot analysis of lysate from human brain tissue lysate, using TR Antibody (Center) (ABIN392820 and ABIN2842252). (ABIN392820 and ABIN2842252) was diluted at 1:1000. A goat anti-rabbit IgG H&L(HRP) at 1:5000 dilution was used as the secondary antibody. Lysate at 35 μ g.



Western Blotting

Image 3. Western blot analysis of TR (arrow) using rabbit polyclonal TR Antibody (Center) (ABIN392820 and ABIN2842252). 293 cell lysates (2 μ g/lane) either nontransfected (Lane 1) or transiently transfected with the TR gene (Lane 2) (Origene Technologies).