

Datasheet for ABIN392823
anti-GBL antibody (AA 140-170)

2 Images

[Go to Product page](#)

Overview

Quantity:	400 µL
Target:	GBL
Binding Specificity:	AA 140-170
Reactivity:	Human
Host:	Rabbit
Clonality:	Polyclonal
Conjugate:	This GBL antibody is un-conjugated
Application:	Western Blotting (WB), Immunohistochemistry (Paraffin-embedded Sections) (IHC (p))

Product Details

Immunogen:	This GBL antibody is generated from rabbits immunized with a KLH conjugated synthetic peptide between 140-170 amino acids from the Central region of human GBL.
Clone:	RB11669
Isotype:	Ig Fraction
Predicted Reactivity:	B, M, Rat
Purification:	This antibody is prepared by Saturated Ammonium Sulfate (SAS) precipitation followed by dialysis against PBS.

Target Details

Target:	GBL
---------	-----

Target Details

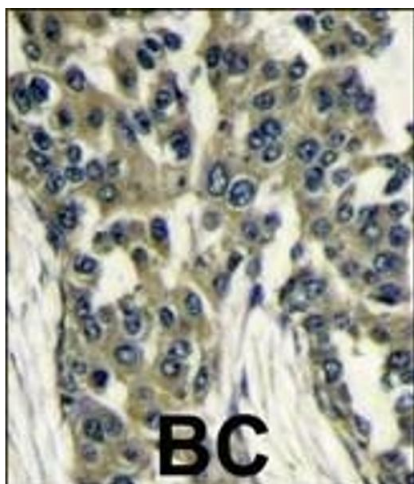
Alternative Name:	GBL (GBL Products)
Background:	G
Molecular Weight:	35876
Gene ID:	64223
NCBI Accession:	NP_001186102 , NP_001186103 , NP_001186104 , NP_071767
UniProt:	Q9BVC4
Pathways:	PI3K-Akt Signaling , RTK Signaling , Fc-epsilon Receptor Signaling Pathway , EGFR Signaling Pathway , Neurotrophin Signaling Pathway , Regulation of Actin Filament Polymerization , Autophagy , CXCR4-mediated Signaling Events , BCR Signaling , Warburg Effect

Application Details

Application Notes:	WB: 1:1000. IHC-P: 1:50~100
Restrictions:	For Research Use only

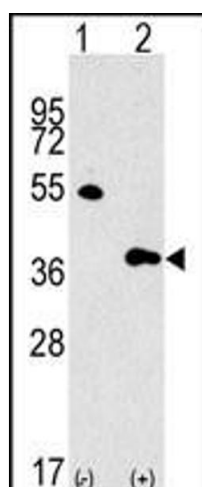
Handling

Format:	Liquid
Buffer:	Purified polyclonal antibody supplied in PBS with 0.09 % (W/V) sodium azide.
Preservative:	Sodium azide
Precaution of Use:	This product contains Sodium azide: a POISONOUS AND HAZARDOUS SUBSTANCE which should be handled by trained staff only.
Storage:	4 °C, -20 °C
Storage Comment:	Maintain refrigerated at 2-8 °C for up to 6 months. For long term storage store at -20 °C in small aliquots to prevent freeze-thaw cycles.
Expiry Date:	6 months



Immunohistochemistry (Paraffin-embedded Sections)

Image 1. Formalin-fixed and paraffin-embedded human breast carcinoma reacted with GBL antibody (Center), which was peroxidase-conjugated to the secondary antibody, followed by DAB staining. This data demonstrates the use of this antibody for immunohistochemistry, clinical relevance has not been evaluated.



Western Blotting

Image 2. Western blot analysis of GBL Antibody (Center) polyclonal antibody (ABIN392823 and ABIN2842254) (arrow). 293 cell lysates (2 µg/lane) either nontransfected (Lane 1) or transiently transfected with the GBL gene (Lane 2) (Origene Technologies).