

Datasheet for ABIN392840  
**anti-PTPRN2 antibody (N-Term)**[Go to Product page](#)

## 1 Image

## Overview

Quantity:	400 µL
Target:	PTPRN2
Binding Specificity:	AA 94-125, N-Term
Reactivity:	Human
Host:	Rabbit
Clonality:	Polyclonal
Conjugate:	This PTPRN2 antibody is un-conjugated
Application:	Western Blotting (WB)

## Product Details

Immunogen:	This PTPIA2 beta antibody is generated from rabbits immunized with a KLH conjugated synthetic peptide between 94-125 amino acids from the N-terminal region of human PTPIA2 beta.
Clone:	RB0597
Isotype:	Ig Fraction
Purification:	This antibody is prepared by Saturated Ammonium Sulfate (SAS) precipitation followed by dialysis against PBS.

## Target Details

Target:	PTPRN2
Alternative Name:	PTPIA2 beta ( <a href="#">PTPRN2 Products</a> )

## Target Details

**Background:** PTPIA2beta is a member of the protein tyrosine phosphatase (PTP) family. PTPs are known to be signaling molecules that regulate a variety of cellular processes including cell growth, differentiation, mitotic cycle, and oncogenic transformation. This PTP possesses an extracellular region, a single transmembrane region, and a single intracellular catalytic domain, and thus represents a receptor-type PTP. The catalytic domain of this PTP is most closely related to PTPRN/IA-2beta. This PTP and PTPRN are both found to be major autoantigens associated with insulin-dependent diabetes mellitus.

**Molecular Weight:** 111271

**Gene ID:** 5799

**NCBI Accession:** [NP\\_002838](#), [NP\\_570857](#), [NP\\_570858](#)

**UniProt:** [Q92932](#)

## Application Details

**Application Notes:** WB: 1:1000

**Restrictions:** For Research Use only

## Handling

**Format:** Liquid

**Buffer:** Purified polyclonal antibody supplied in PBS with 0.09 % (W/V) sodium azide.

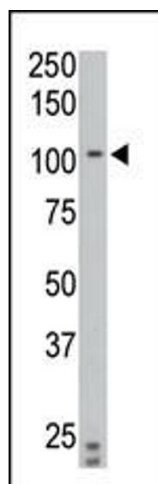
**Preservative:** Sodium azide

**Precaution of Use:** This product contains Sodium azide: a POISONOUS AND HAZARDOUS SUBSTANCE which should be handled by trained staff only.

**Storage:** 4 °C, -20 °C

**Storage Comment:** Maintain refrigerated at 2-8 °C for up to 6 months. For long term storage store at -20 °C in small aliquots to prevent freeze-thaw cycles.

**Expiry Date:** 6 months



#### Western Blotting

**Image 1.** The anti-PTPIA2 beta N-term Pab (ABIN392840 and ABIN2842265) is used in Western blot to detect PTPIA2 beta in C6 cell lysate.