

Datasheet for ABIN392846
anti-PPP1CC antibody (C-Term)[Go to Product page](#)

1 Image

Overview

Quantity:	400 µL
Target:	PPP1CC
Binding Specificity:	AA 291-321, C-Term
Reactivity:	Human
Host:	Rabbit
Clonality:	Polyclonal
Conjugate:	This PPP1CC antibody is un-conjugated
Application:	Western Blotting (WB)

Product Details

Immunogen:	This PP1C gamma (PPP1CC) antibody is generated from rabbits immunized with a KLH conjugated synthetic peptide between 291-321 amino acids from the C-terminal region of human PP1C gamma (PPP1CC).
Clone:	RB5941
Isotype:	Ig Fraction
Predicted Reactivity:	B, M, Rat
Purification:	This antibody is prepared by Saturated Ammonium Sulfate (SAS) precipitation followed by dialysis against PBS.

Target Details

Target:	PPP1CC
---------	--------

Target Details

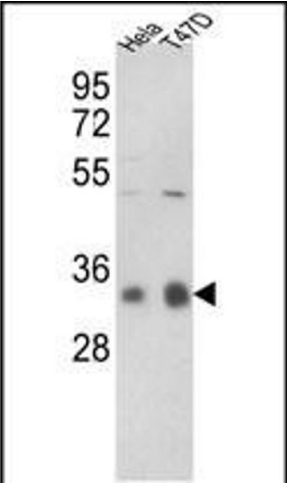
Alternative Name:	PP1C gamma (PPP1CC) (PPP1CC Products)
Background:	Protein phosphatase-1 (PP1) is 1 of 4 major serine/threonine-specific protein phosphatases involved in the dephosphorylation of a variety of proteins. These enzymes work in opposition to the protein kinases to control the level of phosphorylation. Protein phosphatase (PP1) is essential for cell division, and it participates in the regulation of glycogen metabolism, muscle contractility and protein synthesis, as well as in regulation of ionic conductances and long-term synaptic plasticity. PP1 has 3 catalytic subunits, designated alpha (PPP1CA), beta (PPP1CB), and gamma (PPP1CC).
Molecular Weight:	36984
Gene ID:	5501
NCBI Accession:	NP_001231903 , NP_002701
UniProt:	P36873
Pathways:	Cellular Glucan Metabolic Process , Lipid Metabolism

Application Details

Application Notes:	WB: 1:1000
Restrictions:	For Research Use only

Handling

Format:	Liquid
Buffer:	Purified polyclonal antibody supplied in PBS with 0.09 % (W/V) sodium azide.
Preservative:	Sodium azide
Precaution of Use:	This product contains Sodium azide: a POISONOUS AND HAZARDOUS SUBSTANCE which should be handled by trained staff only.
Storage:	4 °C, -20 °C
Storage Comment:	Maintain refrigerated at 2-8 °C for up to 6 months. For long term storage store at -20 °C in small aliquots to prevent freeze-thaw cycles.
Expiry Date:	6 months



Western Blotting

Image 1. Western blot analysis of hP1CC- (ABIN392846 and ABIN2842268) in HeLa, T47D cell line lysates (35 μ g/lane).P1CC (arrow) was detected using the purified Pab.