

Datasheet for ABIN392847
anti-PPP1CB antibody (C-Term)[Go to Product page](#)

2 Images

Overview

Quantity:	400 µL
Target:	PPP1CB
Binding Specificity:	AA 286-315, C-Term
Reactivity:	Human
Host:	Rabbit
Clonality:	Polyclonal
Application:	Western Blotting (WB), Immunofluorescence (IF)

Product Details

Immunogen:	This Protein Phosphatase 1 beta (PPP1CB) antibody is generated from rabbits immunized with a KLH conjugated synthetic peptide between 286-315 amino acids from the C-terminal region of human Protein Phosphatase 1 beta (PPP1CB).
Clone:	RB06024
Isotype:	Ig Fraction
Predicted Reactivity:	B, C, M, Pig, Rb, Rat, X
Purification:	This antibody is prepared by Saturated Ammonium Sulfate (SAS) precipitation followed by dialysis against PBS.

Target Details

Target:	PPP1CB
Alternative Name:	Protein Phosphatase 1 beta (PPP1CB) (PPP1CB Products)

Target Details

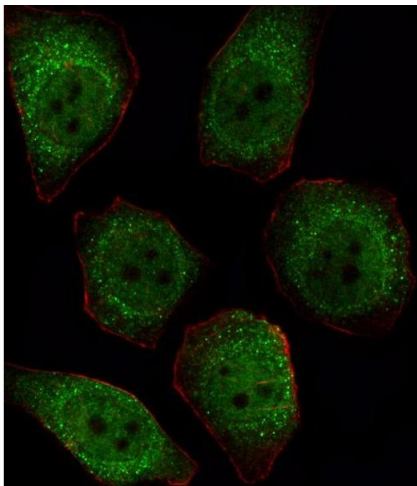
Background:	Protein phosphatase-1 (PP1) is 1 of 4 major serine/threonine-specific protein phosphatases involved in the dephosphorylation of a variety of proteins. These enzymes work in opposition to the protein kinases to control the level of phosphorylation. Protein phosphatase (PP1) is essential for cell division, and it participates in the regulation of glycogen metabolism, muscle contractility and protein synthesis, as well as in regulation of ionic conductances and long-term synaptic plasticity. PP1 has 3 catalytic subunits, designated alpha (PPP1CA), beta (PPP1CB), and gamma (PPP1CC).
Molecular Weight:	37187
Gene ID:	5500
NCBI Accession:	NP_002700 , NP_996759
UniProt:	P62140
Pathways:	M Phase , Cellular Glucan Metabolic Process , Regulation of Carbohydrate Metabolic Process , Lipid Metabolism

Application Details

Application Notes:	IF: 1:10~50. WB: 1:1000
Restrictions:	For Research Use only

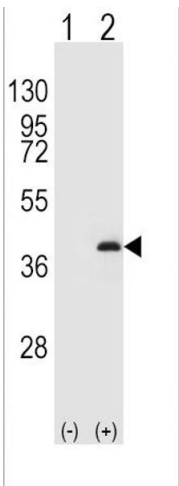
Handling

Format:	Liquid
Buffer:	Purified polyclonal antibody supplied in PBS with 0.09 % (W/V) sodium azide.
Preservative:	Sodium azide
Precaution of Use:	This product contains Sodium azide: a POISONOUS AND HAZARDOUS SUBSTANCE which should be handled by trained staff only.
Storage:	4 °C, -20 °C
Storage Comment:	Maintain refrigerated at 2-8 °C for up to 6 months. For long term storage store at -20 °C in small aliquots to prevent freeze-thaw cycles.
Expiry Date:	6 months



Immunofluorescence

Image 1. Fluorescent image of cell stained with P1CB Antibody (C-term) (ABIN392847 and ABIN2842269). cells were fixed with 4 % PFA (20 min), permeabilized with Triton X-100 (0.1 %, 10 min), then incubated with P1CB primary antibody (1:25, 1 h at 37 °C). For secondary antibody, Alexa Fluor® 488 conjugated donkey anti-rabbit antibody (green) was used (1:400, 50 min at 37 °C). Cytoplasmic actin was counterstained with Alexa Fluor® 555 (red) conjugated Phalloidin (7 units/mL, 1 h at 37 °C). P1CB immunoreactivity is localized to Cytoplasm and Nucleus significantly.



Western Blotting

Image 2. Western blot analysis of P1CB (arrow) using rabbit polyclonal P1CB Antibody (ABIN392847 and ABIN2842269). 293 cell lysates (2 µg/lane) either nontransfected (Lane 1) or transiently transfected (Lane 2) with the P1CB gene.