

Datasheet for ABIN392848
anti-PPM1G antibody (AA 150-180)[Go to Product page](#)

2 Images

Overview

Quantity:	400 µL
Target:	PPM1G
Binding Specificity:	AA 150-180
Reactivity:	Human, Mouse
Host:	Rabbit
Clonality:	Polyclonal
Conjugate:	This PPM1G antibody is un-conjugated
Application:	Western Blotting (WB)

Product Details

Immunogen:	This PPM1G antibody is generated from rabbits immunized with a KLH conjugated synthetic peptide between 150-180 amino acids from the Central region of human PPM1G.
Clone:	RB5657
Isotype:	Ig Fraction
Purification:	This antibody is prepared by Saturated Ammonium Sulfate (SAS) precipitation followed by dialysis against PBS.

Target Details

Target:	PPM1G
Alternative Name:	PPM1G (PPM1G Products)

Target Details

Background: PPM1G is a member of the PP2C family of Ser/Thr protein phosphatases. PP2C family members are known to be negative regulators of cell stress response pathways. This phosphatase is found to be responsible for the dephosphorylation of Pre-mRNA splicing factors, which is important for the formation of functional spliceosome. Studies of a similar gene in mice suggested a role of this phosphatase in regulating cell cycle progression.

Molecular Weight: 59272

Gene ID: 5496

NCBI Accession: [NP_817092](#)

UniProt: [O15355](#)

Application Details

Application Notes: WB: 1:1000. WB: 1:1000

Restrictions: For Research Use only

Handling

Format: Liquid

Buffer: Purified polyclonal antibody supplied in PBS with 0.09 % (W/V) sodium azide.

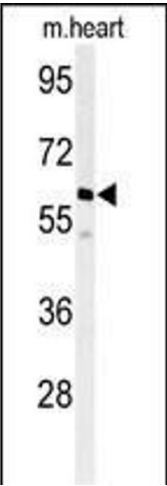
Preservative: Sodium azide

Precaution of Use: This product contains Sodium azide: a POISONOUS AND HAZARDOUS SUBSTANCE which should be handled by trained staff only.

Storage: 4 °C,-20 °C

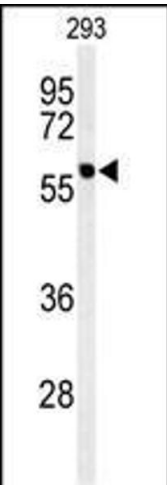
Storage Comment: Maintain refrigerated at 2-8 °C for up to 6 months. For long term storage store at -20 °C in small aliquots to prevent freeze-thaw cycles.

Expiry Date: 6 months



Western Blotting

Image 1. Western blot analysis of hM1G- (ABIN392848 and ABIN2842270) in mouse heart tissue lysates (35 µg/lane). M1G (arrow) was detected using the purified Pab.



Western Blotting

Image 2. Western blot analysis of hM1G- (ABIN392848 and ABIN2842270) in 293 cell line lysates (35 µg/lane). M1G (arrow) was detected using the purified Pab.