

Datasheet for ABIN392859

anti-Dual Specificity Phosphatase 3 (DUSP3) (AA 157-185), (C-Term) antibody[Go to Product page](#)**3** Images

Overview

| | |
|----------------------|---|
| Quantity: | 400 µL |
| Target: | Dual Specificity Phosphatase 3 (DUSP3) |
| Binding Specificity: | AA 157-185, C-Term |
| Reactivity: | Human |
| Host: | Rabbit |
| Clonality: | Polyclonal |
| Conjugate: | Un-conjugated |
| Application: | Western Blotting (WB), Immunohistochemistry (Paraffin-embedded Sections) (IHC (p)), Flow Cytometry (FACS) |

Product Details

| | |
|---------------|--|
| Immunogen: | This DUSP3 antibody is generated from rabbits immunized with a KLH conjugated synthetic peptide between 157-185 amino acids from the C-terminal region of human DUSP3. |
| Clone: | RB5730 |
| Isotype: | Ig Fraction |
| Purification: | This antibody is prepared by Saturated Ammonium Sulfate (SAS) precipitation followed by dialysis against PBS. |

Target Details

| | |
|-------------------|--|
| Target: | Dual Specificity Phosphatase 3 (DUSP3) |
| Alternative Name: | DUSP3 (DUSP3 Products) |

Target Details

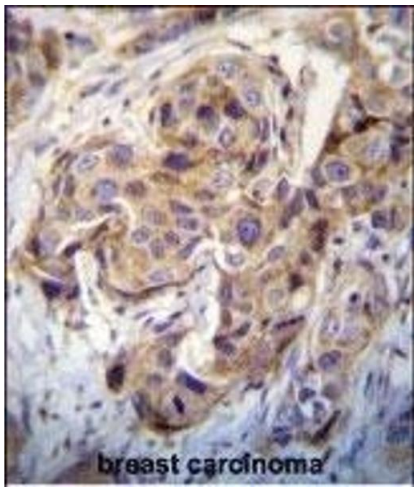
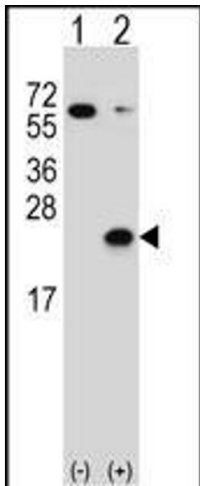
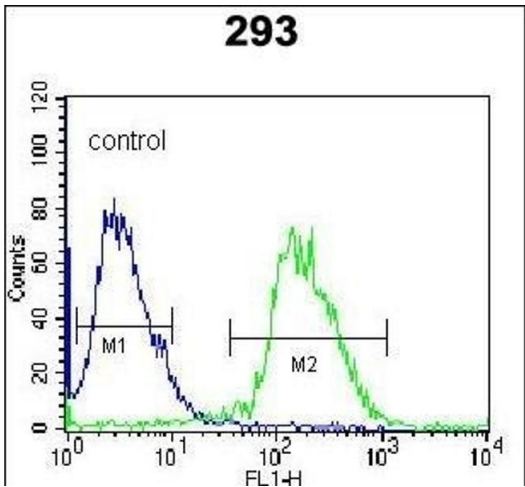
| | |
|-------------------|---|
| Target Type: | Viral Protein |
| Background: | DUSP3 is a member of the dual specificity protein phosphatase subfamily. These phosphatases inactivate their target kinases by dephosphorylating both the phosphoserine/threonine and phosphotyrosine residues. They negatively regulate members of the mitogen-activated protein (MAP) kinase superfamily (MAPK/ERK, SAPK/JNK, p38), which are associated with cellular proliferation and differentiation. Different members of the family of dual specificity phosphatases show distinct substrate specificities for various MAP kinases, different tissue distribution and subcellular localization, and different modes of inducibility of their expression by extracellular stimuli. The gene for this protein maps in a region that contains the BRCA1 locus which confers susceptibility to breast and ovarian cancer. |
| Molecular Weight: | 20478 |
| Gene ID: | 1845 |
| NCBI Accession: | NP_004081 |
| UniProt: | P51452 |
| Pathways: | Neurotrophin Signaling Pathway , Activation of Innate immune Response , Toll-Like Receptors Cascades |

Application Details

| | |
|--------------------|---|
| Application Notes: | WB: 1:1000. IHC-P: 1:10~50. FC: 1:10~50 |
| Restrictions: | For Research Use only |

Handling

| | |
|--------------------|--|
| Format: | Liquid |
| Buffer: | Purified polyclonal antibody supplied in PBS with 0.09 % (W/V) sodium azide. |
| Preservative: | Sodium azide |
| Precaution of Use: | This product contains Sodium azide: a POISONOUS AND HAZARDOUS SUBSTANCE which should be handled by trained staff only. |
| Storage: | 4 °C, -20 °C |
| Storage Comment: | Maintain refrigerated at 2-8 °C for up to 6 months. For long term storage store at -20 °C in small aliquots to prevent freeze-thaw cycles. |



Flow Cytometry

Image 1. DUSP3 Antibody (C-term) (ABIN392859 and ABIN2842277) flow cytometric analysis of 293 cells (right histogram) compared to a negative control cell (left histogram). FITC-conjugated goat-anti-rabbit secondary antibodies were used for the analysis.

Western Blotting

Image 2. Western blot analysis of DUSP3 (arrow) using rabbit polyclonal DUSP3 Antibody (ABIN392859 and ABIN2842277). 293 cell lysates (2 µg/lane) either nontransfected (Lane 1) or transiently transfected (Lane 2) with the DUSP3 gene.

Immunohistochemistry (Paraffin-embedded Sections)

Image 3. DUSP3 Antibody (C-term) (ABIN392859 and ABIN2842277) immunohistochemistry analysis in formalin fixed and paraffin embedded human breast carcinoma followed by peroxidase conjugation of the secondary antibody and DAB staining. This data demonstrates the use of DUSP3 Antibody (C-term) for immunohistochemistry. Clinical relevance has not been evaluated.