

Datasheet for ABIN392883

anti-PPM1F antibody (N-Term)**3** Images[Go to Product page](#)

Overview

| | |
|----------------------|--|
| Quantity: | 400 µL |
| Target: | PPM1F |
| Binding Specificity: | AA 11-40, N-Term |
| Reactivity: | Human |
| Host: | Rabbit |
| Clonality: | Polyclonal |
| Conjugate: | This PPM1F antibody is un-conjugated |
| Application: | Western Blotting (WB), Immunohistochemistry (Paraffin-embedded Sections) (IHC (p)) |

Product Details

| | |
|---------------|--|
| Immunogen: | This PPM1F antibody is generated from rabbits immunized with a KLH conjugated synthetic peptide between 11-40 amino acids from the N-terminal region of human PPM1F. |
| Clone: | RB5923 |
| Isotype: | Ig Fraction |
| Purification: | This antibody is prepared by Saturated Ammonium Sulfate (SAS) precipitation followed by dialysis against PBS. |

Target Details

| | |
|-------------------|--|
| Target: | PPM1F |
| Alternative Name: | PPM1F (PPM1F Products) |

Target Details

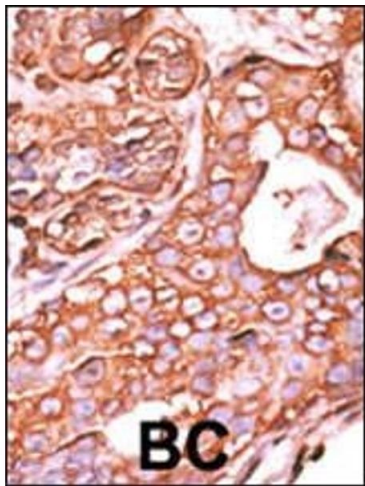
| | |
|-------------------|--|
| Background: | PPM1F is a member of the PP2C family of Ser/Thr protein phosphatases. PP2C family members are known to be negative regulators of cell stress response pathways. This phosphatase can interact with Rho guanine nucleotide exchange factors (PIX), and thus block the effects of p21-activated kinase 1 (PAK), a protein kinase mediating biological effects downstream of Rho GTPases. Calcium/calmodulin-dependent protein kinase II gamma (CAMK2G/CAMK-II) is found to be one of the substrates of this phosphatase. The overexpression of this phosphatase or CAMK2G has been shown to mediate caspase-dependent apoptosis. |
| Molecular Weight: | 49831 |
| Gene ID: | 9647 |
| NCBI Accession: | NP_055449 |
| UniProt: | P49593 |
| Pathways: | Positive Regulation of Endopeptidase Activity |

Application Details

| | |
|--------------------|---|
| Application Notes: | WB: 1:1000. WB: 1:1000. IHC-P: 1:50~100 |
| Restrictions: | For Research Use only |

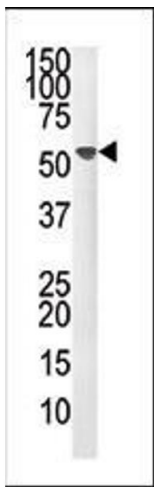
Handling

| | |
|--------------------|--|
| Format: | Liquid |
| Buffer: | Purified polyclonal antibody supplied in PBS with 0.09 % (W/V) sodium azide. |
| Preservative: | Sodium azide |
| Precaution of Use: | This product contains Sodium azide: a POISONOUS AND HAZARDOUS SUBSTANCE which should be handled by trained staff only. |
| Storage: | 4 °C, -20 °C |
| Storage Comment: | Maintain refrigerated at 2-8 °C for up to 6 months. For long term storage store at -20 °C in small aliquots to prevent freeze-thaw cycles. |
| Expiry Date: | 6 months |



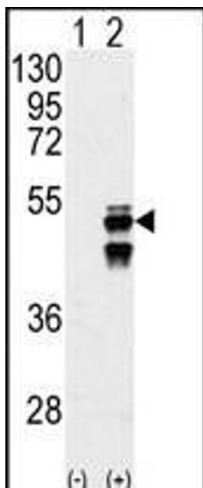
Immunohistochemistry (Paraffin-embedded Sections)

Image 1. Formalin-fixed and paraffin-embedded human cancer tissue reacted with the primary antibody, which was peroxidase-conjugated to the secondary antibody, followed by AEC staining. This data demonstrates the use of this antibody for immunohistochemistry, clinical relevance has not been evaluated. BC = breast carcinoma, HC = hepatocarcinoma.



Western Blotting

Image 2. Western blot analysis of anti-M1F Pab (ABIN392883 and ABIN2842287) in mouse liver tissue lysate (35 µg/lane). M1F (arrow) was detected using the purified Pab.



Western Blotting

Image 3. Western blot analysis of M1F (arrow) using M1F Antibody (N-term) (ABIN392883 and ABIN2842287). 293 cell lysates (2 µg/lane) either nontransfected (Lane 1) or transiently transfected with the M1F gene (Lane 2) (Origene Technologies).