

Datasheet for ABIN392885
anti-CTDSP2 antibody (N-Term)[Go to Product page](#)

4 Images

Overview

Quantity:	400 µL
Target:	CTDSP2
Binding Specificity:	AA 12-42, N-Term
Reactivity:	Human, Mouse
Host:	Rabbit
Clonality:	Polyclonal
Conjugate:	This CTDSP2 antibody is un-conjugated
Application:	Western Blotting (WB), Immunohistochemistry (Paraffin-embedded Sections) (IHC (p))

Product Details

Immunogen:	This CTDSP2 antibody is generated from rabbits immunized with a KLH conjugated synthetic peptide between 12-42 amino acids from the N-terminal region of human CTDSP2.
Clone:	RB5989-RB5990
Isotype:	Ig Fraction
Purification:	This antibody is prepared by Saturated Ammonium Sulfate (SAS) precipitation followed by dialysis against PBS.

Target Details

Target:	CTDSP2
Alternative Name:	CTDSP2 (CTDSP2 Products)

Target Details

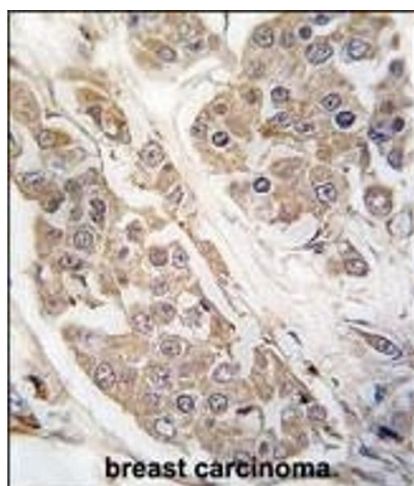
Background:	CTDSP2 is one of several small CTD phosphatases (SCP). It has been proposed that SCP activity is an evolutionarily conserved transcriptional regulator that acts globally to silence neuronal genes. In addition, expression of phosphatase CTDSP2 mRNA is enhanced in several cancer cell lines with amplification of the CTDSP2 and CDK4 genes, and CTDSP2 coamplifies with CDK4 in some primary sarcomas. CTDSP2 may contribute to the development of a subset of sarcomas.
Molecular Weight:	30664
Gene ID:	10106
NCBI Accession:	NP_005721
UniProt:	O14595
Pathways:	ER-Nucleus Signaling

Application Details

Application Notes:	WB: 1:1000. WB: 1:1000. IHC-P: 1:50~100. IHC-P: 1:50~100
Restrictions:	For Research Use only

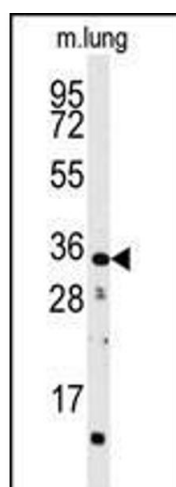
Handling

Format:	Liquid
Buffer:	Purified polyclonal antibody supplied in PBS with 0.09 % (W/V) sodium azide.
Preservative:	Sodium azide
Precaution of Use:	This product contains Sodium azide: a POISONOUS AND HAZARDOUS SUBSTANCE which should be handled by trained staff only.
Storage:	4 °C,-20 °C
Storage Comment:	Maintain refrigerated at 2-8 °C for up to 6 months. For long term storage store at -20 °C in small aliquots to prevent freeze-thaw cycles.
Expiry Date:	6 months



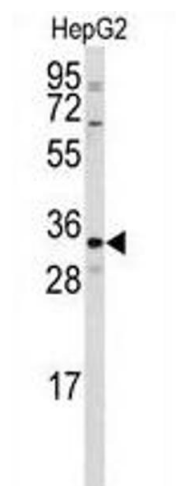
Immunohistochemistry (Paraffin-embedded Sections)

Image 1. Formalin-fixed and paraffin-embedded human breast carcinoma tissue reacted with CTDSP2 Antibody (N-term) (ABIN392885 and ABIN2837997), which was peroxidase-conjugated to the secondary antibody, followed by DAB staining. This data demonstrates the use of this antibody for immunohistochemistry, clinical relevance has not been evaluated.



Western Blotting

Image 2. Western blot analysis of anti-CTDSP2 Antibody (N-term) (ABIN392885 and ABIN2837997) in mouse lung tissue lysates (35 µg/lane). CTDSP2 (arrow) was detected using the purified Pab.



Western Blotting

Image 3. Western blot analysis of anti-CTDSP2 Antibody (N-term) (ABIN392885 and ABIN2837997) in HepG2 cell line lysates (35 µg/lane). hCTDSP2-S27 (arrow) was detected using the purified Pab.

Please check the [product details page](#) for more images. Overall 4 images are available for ABIN392885.