

Datasheet for ABIN392888

## anti-CTDSP1 antibody (C-Term)

3 Images



[Go to Product page](#)

### Overview

Quantity:	400 µL
Target:	CTDSP1
Binding Specificity:	AA 235-261, C-Term
Reactivity:	Human
Host:	Rabbit
Clonality:	Polyclonal
Conjugate:	This CTDSP1 antibody is un-conjugated
Application:	Western Blotting (WB), Immunohistochemistry (Paraffin-embedded Sections) (IHC (p))

### Product Details

Immunogen:	This CTDSP1-V250 antibody is generated from rabbits immunized with a KLH conjugated synthetic peptide between 235-261 amino acids from the C-terminal region of human CTDSP1-V250.
Clone:	RB5996
Isotype:	Ig Fraction
Predicted Reactivity:	M
Purification:	This antibody is prepared by Saturated Ammonium Sulfate (SAS) precipitation followed by dialysis against PBS.

### Target Details

Target:	CTDSP1
---------	--------

## Target Details

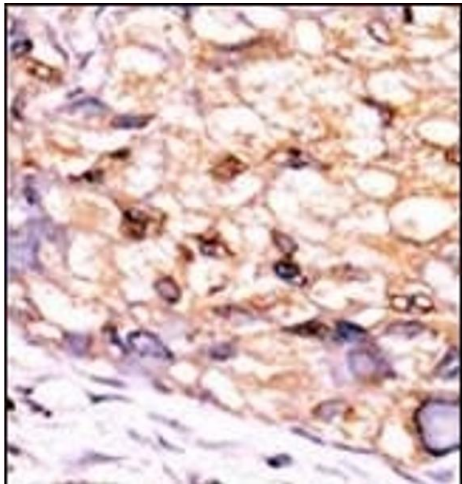
Alternative Name:	CTDSP1 ( <a href="#">CTDSP1 Products</a> )
Background:	<p>CTDSP1 is a class 2C phosphatase with activity dependent on the conserved DxD motif. Expression of CTDSP1 inhibited activated transcription from several promoter-reporter gene constructs, but expression of a mutant lacking phosphatase activity enhanced transcription. Neuronal gene transcription is repressed in nonneuronal cells by the repressor element-1 (RE1)-silencing transcription factor/neuron-restrictive silencer factor (REST/NRSF, 600571) complex. REST/NRSF recruits SCPs to neuronal genes that contain RE1 elements, leading to neuronal gene silencing in nonneuronal cells. Phosphatase-inactive forms of SCP interfere with REST/NRSF function and promote neuronal differentiation of P19 stem cells. Likewise, small interfering RNA directed to the single Drosophila SCP unmask neuronal gene expression in S2 cells. Thus, SCP activity is an evolutionarily conserved transcriptional regulator that acts globally to silence neuronal genes.</p>
Molecular Weight:	29203
Gene ID:	58190
NCBI Accession:	<a href="#">NP_001193807</a> , <a href="#">NP_067021</a> , <a href="#">NP_872580</a>
UniProt:	<a href="#">Q9GZU7</a>

## Application Details

Application Notes:	WB: 1:1000. WB: 1:1000. IHC-P: 1:50~100
Restrictions:	For Research Use only

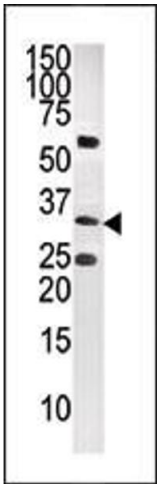
## Handling

Format:	Liquid
Buffer:	Purified polyclonal antibody supplied in PBS with 0.09 % (W/V) sodium azide.
Preservative:	Sodium azide
Precaution of Use:	This product contains Sodium azide: a POISONOUS AND HAZARDOUS SUBSTANCE which should be handled by trained staff only.
Storage:	4 °C, -20 °C
Storage Comment:	Maintain refrigerated at 2-8 °C for up to 6 months. For long term storage store at -20 °C in small aliquots to prevent freeze-thaw cycles.
Expiry Date:	6 months



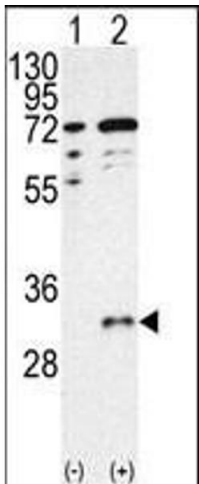
Immunohistochemistry (Paraffin-embedded Sections)

**Image 1.** Formalin-fixed and paraffin-embedded human cancer tissue reacted with the primary antibody, which was peroxidase-conjugated to the secondary antibody, followed by DAB staining. This data demonstrates the use of this antibody for immunohistochemistry, clinical relevance has not been evaluated. BC = breast carcinoma, HC = hepatocarcinoma.



Western Blotting

**Image 2.** The anti-CTDSP1- (ABIN392888 and ABIN2842289) is used in Western blot to detect CTDSP1- in CEM tissue lysate.



Western Blotting

**Image 3.** Western blot analysis of CTDSP1 (arrow) using CTDSP1- Antibody (C-term) (ABIN392888 and ABIN2842289). 293 cell lysates (2 µg/lane) either nontransfected (Lane 1) or transiently transfected with the CTDSP1 gene (Lane 2) (Origene Technologies).