

Datasheet for ABIN392893  
**anti-PPP3CB antibody (N-Term)**

## 3 Images

[Go to Product page](#)

## Overview

Quantity:	400 µL
Target:	PPP3CB
Binding Specificity:	AA 1-30, N-Term
Reactivity:	Human
Host:	Rabbit
Clonality:	Polyclonal
Conjugate:	This PPP3CB antibody is un-conjugated
Application:	Western Blotting (WB), Immunohistochemistry (Paraffin-embedded Sections) (IHC (p))

## Product Details

Immunogen:	This PPP3CB antibody is generated from rabbits immunized with a KLH conjugated synthetic peptide between 1-30 amino acids from the N-terminal region of human PPP3CB.
Clone:	RB6004
Isotype:	Ig Fraction
Predicted Reactivity:	M, Rat
Purification:	This antibody is prepared by Saturated Ammonium Sulfate (SAS) precipitation followed by dialysis against PBS.

## Target Details

Target:	PPP3CB
---------	--------

## Target Details

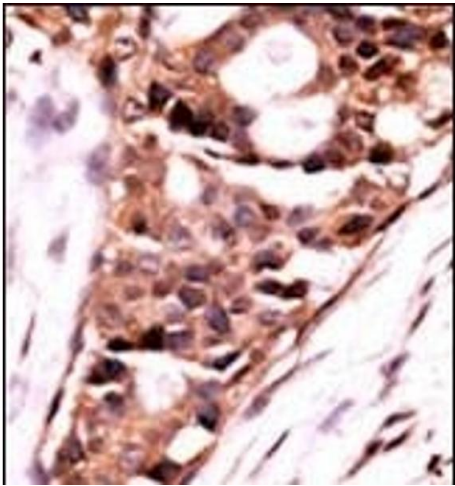
Alternative Name:	PPP3CB ( <a href="#">PPP3CB Products</a> )
Background:	PPP3CB is a calcium-dependent, calmodulin-stimulated protein phosphatase. This subunit may have a role in the calmodulin activation of calcineurin.
Molecular Weight:	59024
Gene ID:	5532
NCBI Accession:	<a href="#">NP_001135825</a> , <a href="#">NP_001135826</a> , <a href="#">NP_066955</a>
UniProt:	<a href="#">P16298</a>
Pathways:	<a href="#">RTK Signaling</a> , <a href="#">WNT Signaling</a> , <a href="#">Fc-epsilon Receptor Signaling Pathway</a> , <a href="#">Positive Regulation of Peptide Hormone Secretion</a> , <a href="#">Regulation of Leukocyte Mediated Immunity</a> , <a href="#">VEGF Signaling</a> , <a href="#">BCR Signaling</a>

## Application Details

Application Notes:	WB: 1:1000. WB: 1:1000. IHC-P: 1:50~100
Restrictions:	For Research Use only

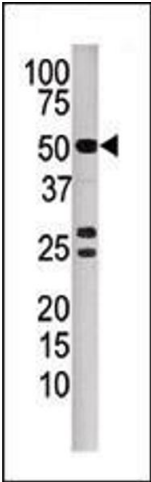
## Handling

Format:	Liquid
Buffer:	Purified polyclonal antibody supplied in PBS with 0.09 % (W/V) sodium azide.
Preservative:	Sodium azide
Precaution of Use:	This product contains Sodium azide: a POISONOUS AND HAZARDOUS SUBSTANCE which should be handled by trained staff only.
Storage:	4 °C, -20 °C
Storage Comment:	Maintain refrigerated at 2-8 °C for up to 6 months. For long term storage store at -20 °C in small aliquots to prevent freeze-thaw cycles.
Expiry Date:	6 months



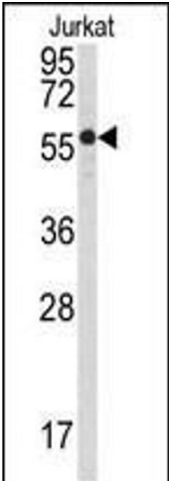
**Immunohistochemistry (Paraffin-embedded Sections)**

**Image 1.** Formalin-fixed and paraffin-embedded human cancer tissue reacted with the primary antibody, which was peroxidase-conjugated to the secondary antibody, followed by AEC staining. This data demonstrates the use of this antibody for immunohistochemistry, clinical relevance has not been evaluated. BC = breast carcinoma, HC = hepatocarcinoma.



**Western Blotting**

**Image 2.** Western blot analysis of anti-P3CB Pab (ABIN392893 and ABIN2842292) in mouse kidney tissue lysate. P3CB(arrow) was detected using the purified Pab.



**Western Blotting**

**Image 3.** Western blot analysis of anti-P3CB Antibody (N-term) (ABIN392893 and ABIN2842292) in Jurkat cell line lysates (35 µg/lane). P3CB(arrow) was detected using the purified Pab.