

Datasheet for ABIN392922
anti-PPP6C antibody (N-Term)

2 Images

[Go to Product page](#)

Overview

Quantity:	400 µL
Target:	PPP6C
Binding Specificity:	AA 1-30, N-Term
Reactivity:	Human
Host:	Rabbit
Clonality:	Polyclonal
Conjugate:	This PPP6C antibody is un-conjugated
Application:	Western Blotting (WB), Immunohistochemistry (Paraffin-embedded Sections) (IHC (p))

Product Details

Immunogen:	This PPP6C antibody is generated from rabbits immunized with a KLH conjugated synthetic peptide between 1-30 amino acids from the N-terminal region of human PPP6C.
Clone:	RB5866
Isotype:	Ig Fraction
Purification:	This antibody is prepared by Saturated Ammonium Sulfate (SAS) precipitation followed by dialysis against PBS.

Target Details

Target:	PPP6C
Alternative Name:	PPP6C (PPP6C Products)

Target Details

Background: PPP6C belongs to the PPP phosphatase family, PP-V subfamily. Reversible phosphorylation of proteins on serine and threonine residues is an important biochemical event that regulates a broad variety of intracellular processes. The phosphorylation state is determined by the well-controlled balance of activities of serine/threonine-specific protein kinases and protein phosphatases, including PPP6C. Expression levels are highest in testis, heart, and skeletal muscle and lowest in placenta, lung, and kidney. PPP6C can complement mutations in the *S. cerevisiae* Sit4 and *S. pombe* ppe1 genes, indicating that PPP6C is the functional homolog of yeast Sit4p and ppe1. Since Sit4p is required for the G1 to S transition of the cell cycle and ppe1 is involved in cell shape control and mitotic division, it has been suggested that PPP6C functions in cell cycle regulation.

Molecular Weight: 35144

Gene ID: 5536

NCBI Accession: [NP_001116827](#), [NP_001116841](#), [NP_002712](#)

UniProt: [O00743](#)

Application Details

Application Notes: WB: 1:1000. IHC-P: 1:50~100

Restrictions: For Research Use only

Handling

Format: Liquid

Buffer: Purified polyclonal antibody supplied in PBS with 0.09 % (W/V) sodium azide.

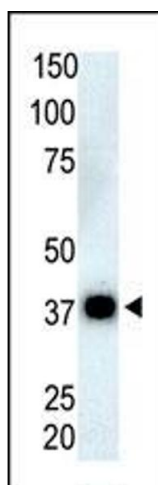
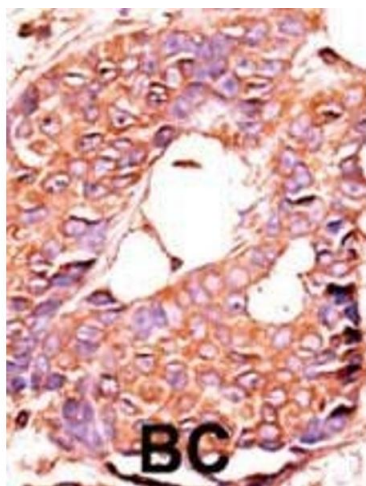
Preservative: Sodium azide

Precaution of Use: This product contains Sodium azide: a POISONOUS AND HAZARDOUS SUBSTANCE which should be handled by trained staff only.

Storage: 4 °C, -20 °C

Storage Comment: Maintain refrigerated at 2-8 °C for up to 6 months. For long term storage store at -20 °C in small aliquots to prevent freeze-thaw cycles.

Expiry Date: 6 months



Immunohistochemistry (Paraffin-embedded Sections)

Image 1. Formalin-fixed and paraffin-embedded human cancer tissue reacted with the primary antibody, which was peroxidase-conjugated to the secondary antibody, followed by AEC staining. This data demonstrates the use of this antibody for immunohistochemistry, clinical relevance has not been evaluated. BC = breast carcinoma, HC = hepatocarcinoma.

Western Blotting

Image 2. The anti-P6C Pab (ABIN392922 and ABIN2842296) is used in Western blot to detect P6C in Thymus cell lysate.