



[Go to Product page](#)

Datasheet for ABIN396880

## anti-SLC7A14 antibody (AA 131-180)

### 2 Images

#### Overview

Quantity:	100 µL
Target:	SLC7A14
Binding Specificity:	AA 131-180
Reactivity:	Human, Mouse, Rat, Dog, Zebrafish (Danio rerio), Cow, Guinea Pig, Horse, Rabbit, Bat, Chicken, Hamster, Monkey, Pig
Host:	Rabbit
Clonality:	Polyclonal
Conjugate:	This SLC7A14 antibody is un-conjugated
Application:	Immunohistochemistry (IHC), Western Blotting (WB), Immunohistochemistry (Paraffin-embedded Sections) (IHC (p))

#### Product Details

Immunogen:	Synthetic peptide located between aa131-180 of human SLC7A14 (Q8TBB6, NP_066000). Percent identity by BLAST analysis: Human, Chimpanzee, Gorilla, Gibbon, Monkey, Galago, Marmoset, Mouse, Rat, Hamster, Elephant, Panda, Dog, Bovine, Bat, Rabbit, Horse, Pig, Opossum, Guinea pig, Turkey, Zebra finch, Chicken, Platypus, Lizard, Zebrafish (100%), Xenopus (92%).  Type of Immunogen: Synthetic peptide
Isotype:	IgG
Specificity:	Human SLC7A14

## Product Details

---

Predicted Reactivity: Percent identity by BLAST analysis: Mouse, Rat, Dog, Rabbit, Horse, Pig, Chicken (100%).

---

Purification: Protein A purified

---

## Target Details

---

Target: SLC7A14

---

Alternative Name: SLC7A14 ([SLC7A14 Products](#))

---

Background: Name/Gene ID: SLC7A14  
Subfamily: Cationic amino acid transporter  
Family: Transporter

Synonyms: SLC7A14, KIAA1613

---

Gene ID: 57709

---

NCBI Accession: [NP\\_066000](#)

---

UniProt: [Q8TBB6](#)

---

## Application Details

---

Application Notes: Approved: IHC, IHC-P, WB (2.5 µg/mL)

---

Comment: Target Species of Antibody: Human

---

Restrictions: For Research Use only

---

## Handling

---

Format: Lyophilized

---

Reconstitution: After adding water, will consist of PBS buffer with 2 % sucrose

---

Concentration: Lot specific

---

Buffer: Lyophilized from PBS with 2 % sucrose

---

Storage: 4 °C, -20 °C

---

Storage Comment: Long term: -20°C, the use of 50% glycerol is recommended if storing aliquots in -20°C for long term use (up to 1 year)  
Short term (less than 1 week): 4°C. Avoid freeze-thaw cycles.

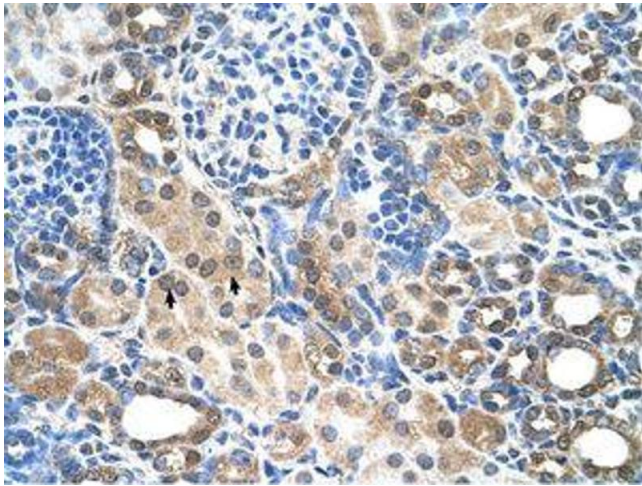


Image 1.

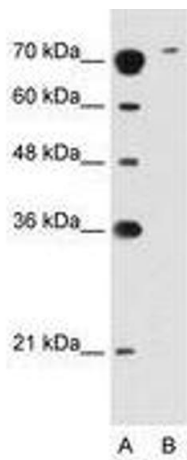


Image 2.