

Datasheet for ABIN396916

anti-alpha 2 Macroglobulin antibody (C-Term)**2** Images[Go to Product page](#)

Overview

Quantity:	50 µg
Target:	alpha 2 Macroglobulin (A2M)
Binding Specificity:	C-Term
Reactivity:	Human, Rat
Host:	Rabbit
Clonality:	Polyclonal
Conjugate:	This alpha 2 Macroglobulin antibody is un-conjugated
Application:	Western Blotting (WB), Immunohistochemistry (IHC), ELISA, Immunohistochemistry (Paraffin-embedded Sections) (IHC (p))

Product Details

Brand:	IHC-plus™
Immunogen:	Synthetic peptide from human A2M / Alpha-2-Macroglobulin. Type of Immunogen: Synthetic peptide
Specificity:	Synthetic peptide corresponding to C-terminal residues of human A2M (Alpha-2-macroglobulin precursor)
Purification:	Immunoaffinity purified

Target Details

Target:	alpha 2 Macroglobulin (A2M)
---------	-----------------------------

Target Details

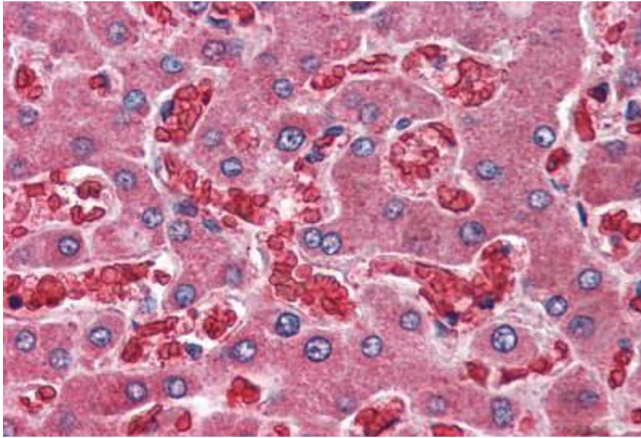
Alternative Name:	Alpha-2-Macroglobulin / A2M (A2M Products)
Background:	Name/Gene ID: A2M Synonyms: A2M, CPAMD5, A2MD, FWP007, Alpha-2-M, Alpha-2-macroglobulin, S863-7
Gene ID:	2
UniProt:	P01023
Pathways:	Lipid Metabolism

Application Details

Application Notes:	Approved: ELISA, IHC, IHC-P (10 µg/mL), WB (1 µg/mL) Usage: Immunohistochemistry: This antibody was validated for use in immunohistochemistry on a panel of 21 formalin-fixed, paraffin-embedded (FFPE) human tissues after heat induced antigen retrieval in pH 6.0 citrate buffer. After incubation with the primary antibody, slides were incubated with biotinylated secondary antibody, followed by alkaline phosphatase-streptavidin and chromogen. The stained slides were evaluated by a pathologist to confirm staining specificity. The optimal working concentration for this antibody was determined to be 10 µg/mL.
Comment:	Target Species of Antibody: Human
Restrictions:	For Research Use only

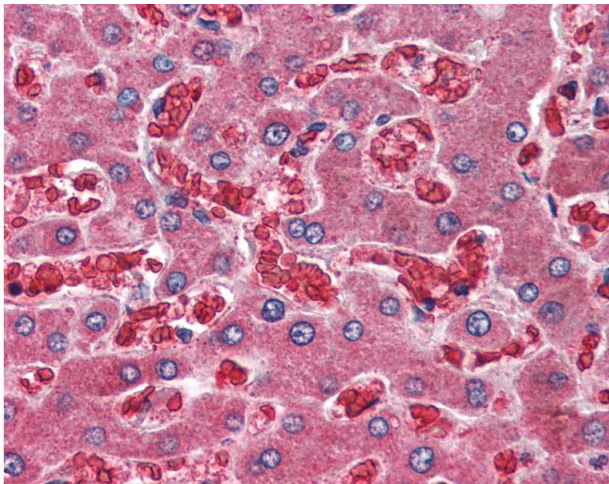
Handling

Format:	Liquid
Concentration:	Lot specific
Buffer:	PBS, 0.01 % sodium azide, 50 % glycerol.
Preservative:	Sodium azide
Precaution of Use:	This product contains Sodium azide: a POISONOUS AND HAZARDOUS SUBSTANCE which should be handled by trained staff only.



Immunohistochemistry (Paraffin-embedded Sections)

Image 1. Human Liver (formalin-fixed, paraffin-embedded) stained with A2M antibody ABIN396916 at 10 ug/ml followed by biotinylated goat anti-rabbit IgG secondary antibody ABIN481713, alkaline phosphatase-streptavidin and chromogen.



Immunohistochemistry

Image 2. Anti-A2M / Alpha-2-Macroglobulin antibody IHC of human liver. Immunohistochemistry of formalin-fixed, paraffin-embedded tissue after heat-induced antigen retrieval. Antibody concentration 10 ug/ml.