

Datasheet for ABIN396919

anti-Desmin antibody**3** Images[Go to Product page](#)

Overview

Quantity:	50 µg
Target:	Desmin (DES)
Reactivity:	Human, Mouse, Rat, Hamster, Pig, Dog, Rabbit
Host:	Mouse
Clonality:	Monoclonal
Conjugate:	This Desmin antibody is un-conjugated
Application:	Western Blotting (WB), Immunohistochemistry (IHC), Immunohistochemistry (Paraffin-embedded Sections) (IHC (p)), Immunohistochemistry (Frozen Sections) (IHC (fro))

Product Details

Brand:	IHC-plus™
Immunogen:	Desmin.
Isotype:	IgG2b
Specificity:	Reactive with smooth and striated muscle cells and their tumors e. g. rhabdomyosarcoma and leiomyosarcoma.
Purification:	Protein G purified

Target Details

Target:	Desmin (DES)
Alternative Name:	DES / Desmin (DES Products)

Target Details

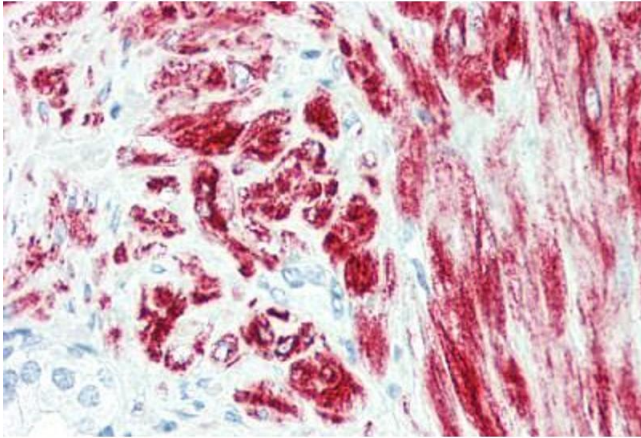
Background:	Name/Gene ID: DES Synonyms: DES, ARVC7, ARVD7, CMD1I, CSM1, CSM2, MFM1, SCPNK, Desmin, Intermediate filament protein
Gene ID:	1674
UniProt:	P17661

Application Details

Application Notes:	Approved: IHC, IHC-Fr, IHC-P (10 µg/mL), WB Usage: Immunohistochemistry: This antibody was validated for use in immunohistochemistry on a panel of 21 formalin-fixed, paraffin-embedded (FFPE) human tissues after heat induced antigen retrieval in pH 6.0 citrate buffer. After incubation with the primary antibody, slides were incubated with biotinylated secondary antibody, followed by alkaline phosphatase-streptavidin and chromogen. The stained slides were evaluated by a pathologist to confirm staining specificity. The optimal working concentration for this antibody was determined to be 10 µg/mL.
Comment:	Target Species of Antibody: Human
Restrictions:	For Research Use only

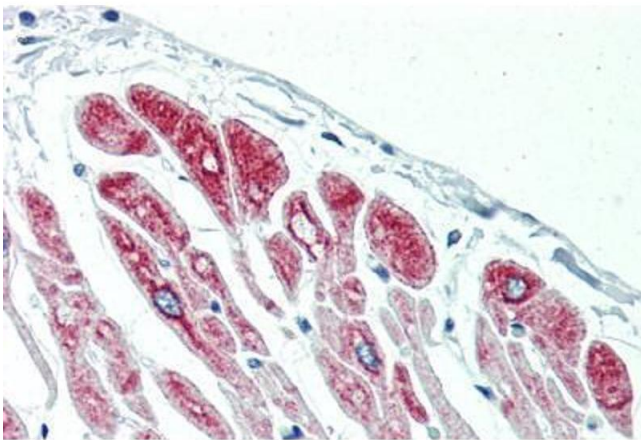
Handling

Format:	Liquid
Concentration:	Lot specific
Buffer:	PBS, 0.09 % sodium azide
Preservative:	Sodium azide
Precaution of Use:	This product contains Sodium azide: a POISONOUS AND HAZARDOUS SUBSTANCE which should be handled by trained staff only.
Handling Advice:	Avoid freeze-thaw cycles.
Storage:	4 °C,-20 °C
Storage Comment:	Short term: 4°C. Long term: Store at -20°C. Avoid freeze-thaw cycles.



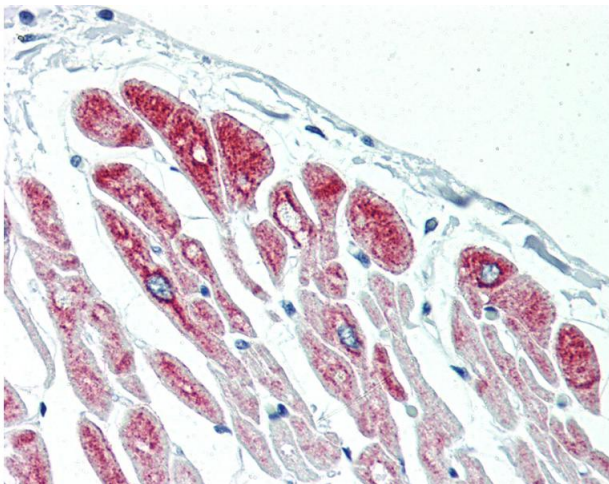
Immunohistochemistry (Paraffin-embedded Sections)

Image 1. Human Prostate (formalin-fixed, paraffin-embedded) stained with DES antibody ABIN396919 at 10 ug/ml followed by biotinylated anti-mouse IgG secondary antibody ABIN481714, alkaline phosphatase-streptavidin and chromogen.



Immunohistochemistry (Paraffin-embedded Sections)

Image 2. Human Heart (formalin-fixed, paraffin-embedded) stained with DES antibody ABIN396919 at 10 ug/ml followed by biotinylated anti-mouse IgG secondary antibody ABIN481714, alkaline phosphatase-streptavidin and chromogen.



Immunohistochemistry

Image 3. Anti-DES / Desmin antibody IHC of human heart. Immunohistochemistry of formalin-fixed, paraffin-embedded tissue after heat-induced antigen retrieval. Antibody concentration 10 ug/ml.