



[Go to Product page](#)

Datasheet for ABIN396933

## anti-P4HB antibody (AA 499-509)

### 3 Images

#### Overview

Quantity:	50 µg
Target:	P4HB
Binding Specificity:	AA 499-509
Reactivity:	Human, Mouse, Rat, Hamster, Cow, Dog, Monkey, Guinea Pig, Pig, Sheep, Xenopus laevis, Rabbit, Chicken
Host:	Mouse
Clonality:	Monoclonal
Conjugate:	This P4HB antibody is un-conjugated
Application:	Western Blotting (WB), Immunohistochemistry (IHC), Immunocytochemistry (ICC), Immunohistochemistry (Paraffin-embedded Sections) (IHC (p))

#### Product Details

Brand:	IHC-plus™
Immunogen:	Synthetic peptide corresponding to aa499-509 of rat protein disulfide isomerase (KLH coupled). Type of Immunogen: Synthetic peptide
Isotype:	IgG1
Specificity:	Recognizes rat protein disulfide isomerase at ~58kD.
Purification:	Protein G purified

## Target Details

---

Target:	P4HB
Alternative Name:	PDI / P4HB ( <a href="#">P4HB Products</a> )
Background:	Name/Gene ID: P4HB  Synonyms: P4HB, ERBA2L, DSI, GIT, p4HB, p4Hbeta, PDIA1, PHDB, PO4DB, PROHB, Protocollagen hydroxylase, Protein disulfide-isomerase, PO4HB, PDI
Gene ID:	5034
UniProt:	<a href="#">P07237</a>
Pathways:	<a href="#">Maintenance of Protein Location</a> , <a href="#">Cell RedoxHomeostasis</a> , <a href="#">Lipid Metabolism</a>

## Application Details

---

Application Notes:	Approved: ICC, IHC, IHC-P (5 µg/mL), WB  Usage: Immunohistochemistry: This antibody was validated for use in immunohistochemistry on a panel of 21 formalin-fixed, paraffin-embedded (FFPE) human tissues after heat induced antigen retrieval in pH 6.0 citrate buffer. After incubation with the primary antibody, slides were incubated with biotinylated secondary antibody, followed by alkaline phosphatase-streptavidin and chromogen. The stained slides were evaluated by a pathologist to confirm staining specificity. The optimal working concentration for this antibody was determined to be 5 µg/mL. Positive control: HeLa Heat Shocked Cell Lysate, MCF-7 cell lysate.
Comment:	Target Species of Antibody: Rat
Restrictions:	For Research Use only

## Handling

---

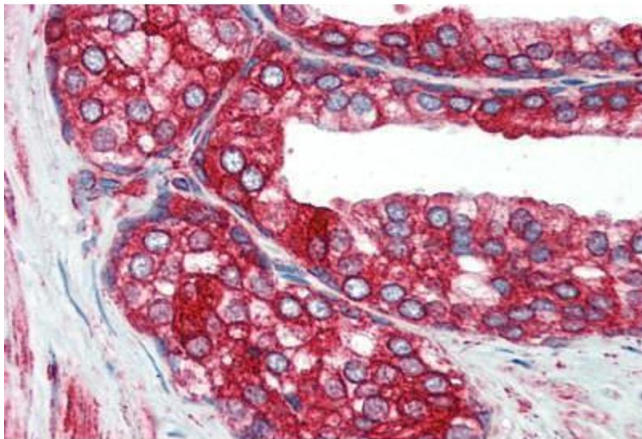
Format:	Liquid
Concentration:	Lot specific
Buffer:	PBS, pH 7.2, 0.09 % sodium azide, 50 % glycerol.
Preservative:	Sodium azide
Precaution of Use:	This product contains Sodium azide: a POISONOUS AND HAZARDOUS SUBSTANCE which should be handled by trained staff only.
Handling Advice:	Avoid repeated freezing and thawing.

## Handling

Storage: 4 °C, -20 °C

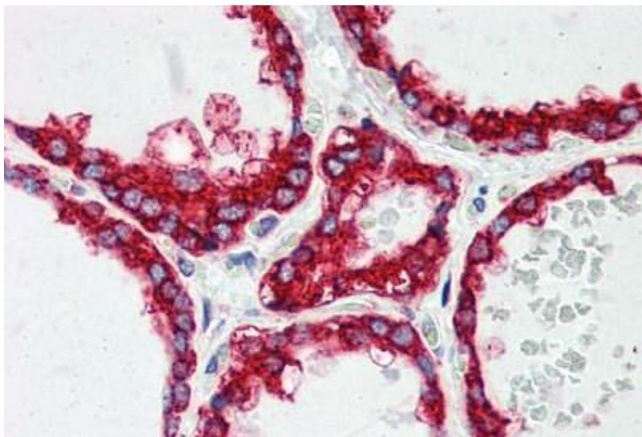
Storage Comment: 4°C or -20°C, Avoid freeze-thaw cycles.

## Images



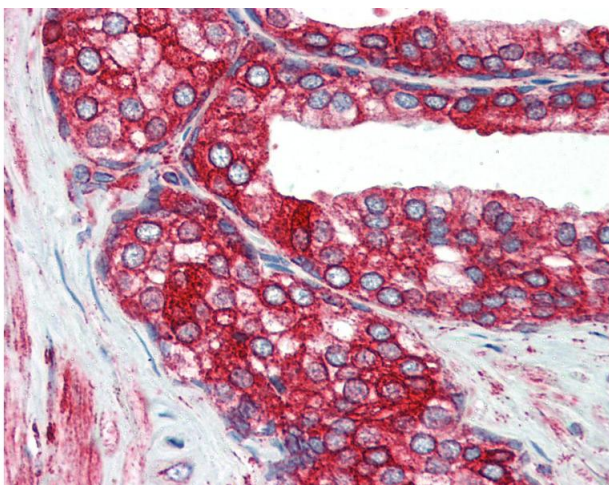
### Immunohistochemistry (Paraffin-embedded Sections)

**Image 1.** Human Prostate (formalin-fixed, paraffin-embedded) stained with P4HB antibody ABIN396933 at 5 ug/ml followed by biotinylated anti-mouse IgG secondary antibody ABIN481714, alkaline phosphatase-streptavidin and chromogen.



### Immunohistochemistry (Paraffin-embedded Sections)

**Image 2.** Human Thyroid (formalin-fixed, paraffin-embedded) stained with P4HB antibody ABIN396933 at 5 ug/ml followed by biotinylated anti-mouse IgG secondary antibody ABIN481714, alkaline phosphatase-streptavidin and chromogen.



### Immunohistochemistry

**Image 3.** Anti-P4HB antibody IHC of human prostate. Immunohistochemistry of formalin-fixed, paraffin-embedded tissue after heat-induced antigen retrieval. Antibody concentration 5 ug/ml.