

Datasheet for ABIN396935

**anti-CD90 antibody**

## 4 Images

[Go to Product page](#)

## Overview

Quantity:	50 µg
Target:	CD90 (THY1)
Reactivity:	Human, Monkey, Baboon
Host:	Mouse
Clonality:	Monoclonal
Conjugate:	This CD90 antibody is un-conjugated
Application:	Flow Cytometry (FACS), Immunohistochemistry (IHC), Immunohistochemistry (Frozen Sections) (IHC (fro)), Immunoprecipitation (IP), Immunohistochemistry (Paraffin-embedded Sections) (IHC (p))

## Product Details

Brand:	IHC-plus™
Immunogen:	Cells.
Clone:	5E10
Isotype:	IgG1 kappa
Specificity:	HEL cells
Purification:	Affinity purified

## Target Details

Target:	CD90 (THY1)
---------	-------------

## Target Details

Alternative Name:	THY1 / CD90 ( <a href="#">THY1 Products</a> )
Background:	Name/Gene ID: THY1  Synonyms: THY1, CD90 antigen, CD90, CDw90, Thy-1 antigen, Thy-1 T-cell antigen, Thy-1, Thy-1 cell surface antigen, Thy-1 membrane glycoprotein
Gene ID:	7070
UniProt:	<a href="#">P04216</a>
Pathways:	<a href="#">Cell-Cell Junction Organization</a>

## Application Details

Application Notes:	Approved: Flo, IHC, IHC-Fr, IHC-P (10 µg/mL), IP  Usage: Immunohistochemistry: This antibody was validated for use in immunohistochemistry on a panel of 21 formalin-fixed, paraffin-embedded (FFPE) human tissues after heat induced antigen retrieval in pH 6.0 citrate buffer. After incubation with the primary antibody, slides were incubated with biotinylated secondary antibody, followed by alkaline phosphatase-streptavidin and chromogen. The stained slides were evaluated by a pathologist to confirm staining specificity. The optimal working concentration for this antibody was determined to be 10 µg/mL.
Comment:	Target Species of Antibody: Human
Restrictions:	For Research Use only

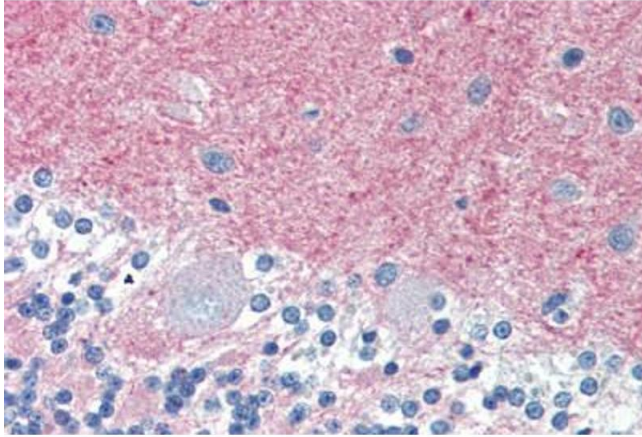
## Handling

Format:	Liquid
Concentration:	Lot specific
Buffer:	Phosphate-buffered solution, pH 7.2, 0.09 % sodium azide.
Preservative:	Sodium azide
Precaution of Use:	This product contains Sodium azide: a POISONOUS AND HAZARDOUS SUBSTANCE which should be handled by trained staff only.
Handling Advice:	avoid freezing
Storage:	4 °C

## Handling

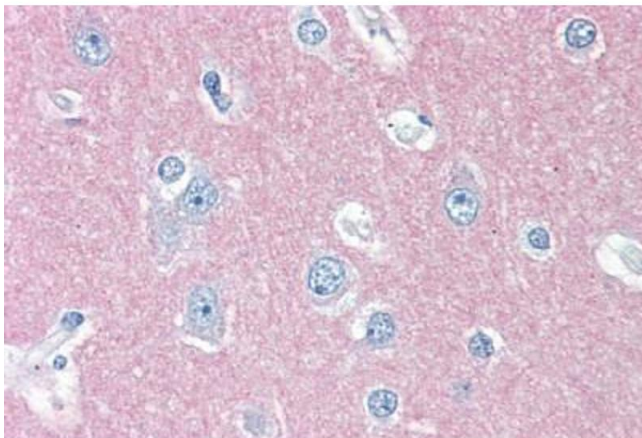
Storage Comment: 4°C, avoid freezing.

## Images



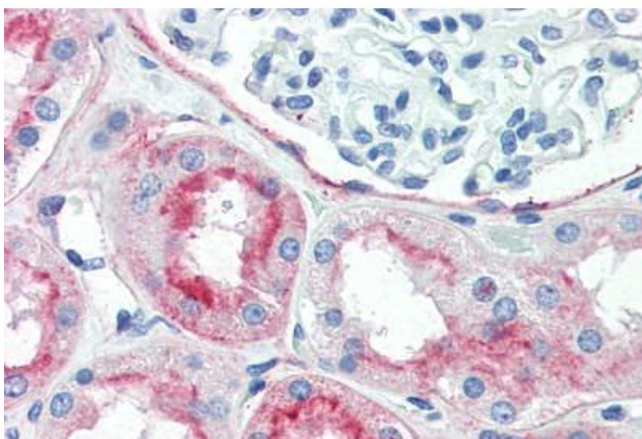
### Immunohistochemistry (Paraffin-embedded Sections)

**Image 1.** Human Brain, Cerebellum (formalin-fixed, paraffin-embedded) stained with THY1 antibody ABIN396935 at 10 ug/ml followed by biotinylated anti-mouse IgG secondary antibody ABIN481714, alkaline phosphatase-streptavidin and chromogen.



### Immunohistochemistry (Paraffin-embedded Sections)

**Image 2.** Human Brain, Cortex (formalin-fixed, paraffin-embedded) stained with THY1 antibody ABIN396935 at 10 ug/ml followed by biotinylated anti-mouse IgG secondary antibody ABIN481714, alkaline phosphatase-streptavidin and chromogen.



### Immunohistochemistry (Paraffin-embedded Sections)

**Image 3.** Human Kidney (formalin-fixed, paraffin-embedded) stained with THY1 antibody ABIN396935 at 10 ug/ml followed by biotinylated anti-mouse IgG secondary antibody ABIN481714, alkaline phosphatase-streptavidin and chromogen.

Please check the [product details page](#) for more images. Overall 4 images are available for ABIN396935.