



[Go to Product page](#)

Datasheet for ABIN396937

anti-Ubiquilin 1 antibody (Internal Region)

3 Images

Overview

Quantity:	50 µg
Target:	Ubiquilin 1 (UBQLN1)
Binding Specificity:	Internal Region
Reactivity:	Human
Host:	Mouse
Clonality:	Monoclonal
Conjugate:	This Ubiquilin 1 antibody is un-conjugated
Application:	Western Blotting (WB), ELISA, Immunohistochemistry (IHC), Immunohistochemistry (Paraffin-embedded Sections) (IHC (p)), Immunoprecipitation (IP)

Product Details

Brand:	IHC-plus™
Immunogen:	Recombinant protein derived from an internal region of human ubiquilin. Type of Immunogen: Recombinant protein
Clone:	3D5E2
Isotype:	IgG2b kappa
Specificity:	Specific for the ubiquilin protein. On Western blots, it identifies a band at ~66kD. Reactivity has been confirmed with human HEK293 cell lysates.
Purification:	Protein A purified

Target Details

Target:	Ubiquilin 1 (UBQLN1)
Alternative Name:	UBQLN1 / Ubiquilin (UBQLN1 Products)
Background:	Name/Gene ID: UBQLN1 Synonyms: UBQLN1, DA41, HPLIC-1, PLIC-1, Ubiquilin, UBQN, XDRP1, DSK2, PLIC1, Ubiquilin 1, Ubiquilin-1
Gene ID:	29979
UniProt:	Q9UMX0

Application Details

Application Notes:	Approved: ELISA (0.1 - 1 µg/mL), IHC, IHC-P (10 µg/mL), IP, WB (1 µg/mL) Usage: Immunohistochemistry: This antibody was validated for use in immunohistochemistry on a panel of 21 formalin-fixed, paraffin-embedded (FFPE) human tissues after heat induced antigen retrieval in pH 6.0 citrate buffer. After incubation with the primary antibody, slides were incubated with biotinylated secondary antibody, followed by alkaline phosphatase-streptavidin and chromogen. The stained slides were evaluated by a pathologist to confirm staining specificity. The optimal working concentration for this antibody was determined to be 10 µg/mL. Immunoprecipitation: 2 µg/reaction. Use native protein.
Comment:	Target Species of Antibody: Human
Restrictions:	For Research Use only

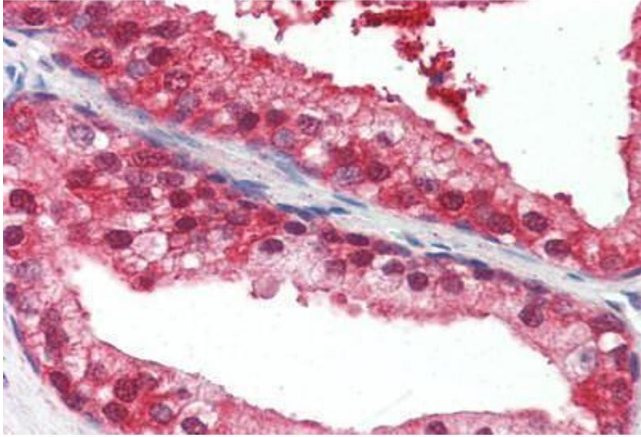
Handling

Format:	Liquid
Concentration:	Lot specific
Buffer:	PBS, pH 7.4, 0.09 % sodium azide.
Preservative:	Sodium azide
Precaution of Use:	This product contains Sodium azide: a POISONOUS AND HAZARDOUS SUBSTANCE which should be handled by trained staff only.
Handling Advice:	Avoid repeated freezing and thawing.
Storage:	4 °C, -20 °C

Handling

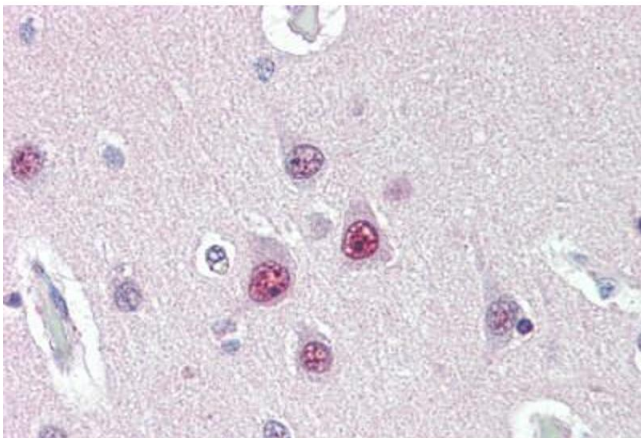
Storage Comment: Short term: 4°C. Long term: Store at -20°C. Avoid freeze-thaw cycles.

Images



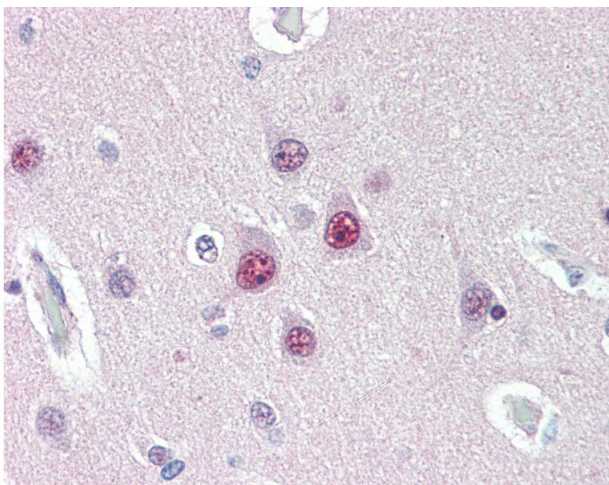
Immunohistochemistry (Paraffin-embedded Sections)

Image 1. Human Prostate (formalin-fixed, paraffin-embedded) stained with UBQLN1 antibody ABIN396937 at 10 ug/ml followed by biotinylated anti-mouse IgG secondary antibody ABIN481714, alkaline phosphatase-streptavidin and chromogen.



Immunohistochemistry (Paraffin-embedded Sections)

Image 2. Human Brain, Cortex (formalin-fixed, paraffin-embedded) stained with UBQLN1 antibody ABIN396937 at 10 ug/ml followed by biotinylated anti-mouse IgG secondary antibody ABIN481714, alkaline phosphatase-streptavidin and chromogen.



Immunohistochemistry

Image 3. Anti-UBQLN1 antibody IHC of human brain, cortex. Immunohistochemistry of formalin-fixed, paraffin-embedded tissue after heat-induced antigen retrieval. Antibody concentration 10 ug/ml.