

Datasheet for ABIN396947  
**anti-DLG4 antibody (C-Term)**[Go to Product page](#)

## 4 Images

## Overview

Quantity:	50 µg
Target:	DLG4
Binding Specificity:	C-Term
Reactivity:	Rat, Mouse, Human
Host:	Rabbit
Clonality:	Polyclonal
Conjugate:	This DLG4 antibody is un-conjugated
Application:	Western Blotting (WB), Immunohistochemistry (IHC), Immunofluorescence (IF), ELISA, Immunoprecipitation (IP), Immunohistochemistry (Paraffin-embedded Sections) (IHC (p))

## Product Details

Brand:	IHC-plus™
Immunogen:	Synthetic peptide derived from the C-terminal region of human PSD-95 (KLH).  Type of Immunogen: Synthetic peptide
Isotype:	IgG
Specificity:	Recognizes the ~95kD PSD-95 protein. Cross-reactivity with an unknown protein at ~50kD with rat brain homogenates but not with mouse brain homogenates. Species cross-reactivity: human, rat and mouse.
Purification:	Immunoaffinity purified

## Target Details

Target:	DLG4
Alternative Name:	DLG4 / PSD95 ( <a href="#">DLG4 Products</a> )
Background:	Name/Gene ID: DLG4 Family: MAGUK  Synonyms: DLG4, Disks large homolog 4, Presynaptic density protein 95, PSD95, SAP-90, Synapse-associated protein 90, PSD-95, SAP90, Tax interaction protein 15, Discs large homolog 4
Gene ID:	1742
UniProt:	<a href="#">P78352</a>
Pathways:	<a href="#">Regulation of Muscle Cell Differentiation</a> , <a href="#">Synaptic Membrane</a> , <a href="#">Skeletal Muscle Fiber Development</a> , <a href="#">Asymmetric Protein Localization</a> , <a href="#">Regulation of long-term Neuronal Synaptic Plasticity</a>

## Application Details

Application Notes:	Approved: ELISA (0.1 - 1 µg/mL), IF (0.5 - 1 µg/mL), IHC, IHC-P (5 µg/mL), IP, WB (1 µg/mL)  Usage: Immunohistochemistry: This antibody was validated for use in immunohistochemistry on a panel of 21 formalin-fixed, paraffin-embedded (FFPE) human tissues after heat induced antigen retrieval in pH 6.0 citrate buffer. After incubation with the primary antibody, slides were incubated with biotinylated secondary antibody, followed by alkaline phosphatase-streptavidin and chromogen. The stained slides were evaluated by a pathologist to confirm staining specificity. The optimal working concentration for this antibody was determined to be 5 µg/mL.
Comment:	Target Species of Antibody: Human
Restrictions:	For Research Use only

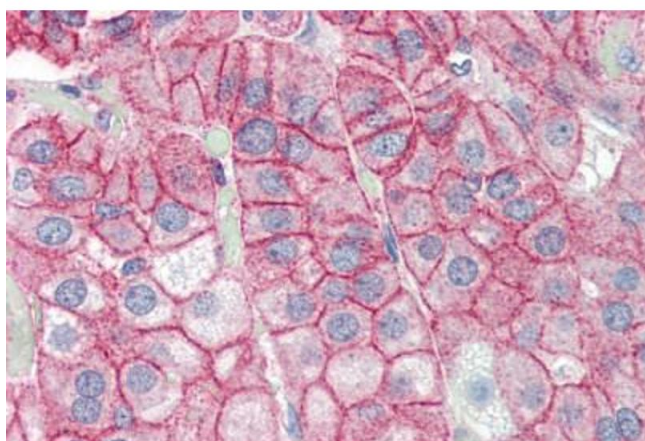
## Handling

Format:	Liquid
Concentration:	Lot specific
Buffer:	PBS, pH 7.4, 0.09 % sodium azide.
Preservative:	Sodium azide

## Handling

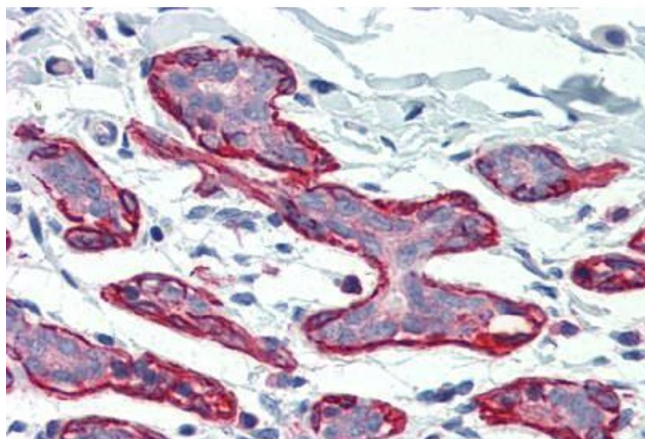
Precaution of Use:	This product contains Sodium azide: a POISONOUS AND HAZARDOUS SUBSTANCE which should be handled by trained staff only.
Handling Advice:	Avoid repeated freezing and thawing.
Storage:	4 °C,-20 °C
Storage Comment:	4°C or -20°C, Avoid freeze-thaw cycles.

## Images



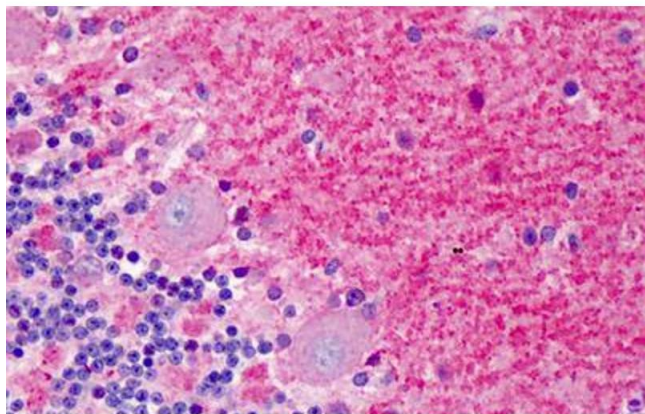
### Immunohistochemistry

**Image 1.** Anti-DLG4 / PSD95 antibody IHC staining of human adrenal. Immunohistochemistry of formalin-fixed, paraffin-embedded tissue after heat-induced antigen retrieval. Antibody ABIN396947 concentration 5 ug/ml.



### Immunohistochemistry (Paraffin-embedded Sections)

**Image 2.** Human Breast (formalin-fixed, paraffin-embedded) stained with DLG4 antibody ABIN396947 at 5 ug/ml followed by biotinylated goat anti-rabbit IgG secondary antibody ABIN481713, alkaline phosphatase-streptavidin and chromogen.



**Immunohistochemistry (Formalin-fixed Paraffin-embedded Sections)**

**Image 3.** Human Brain, Cerebellum: Formalin-Fixed, Paraffin-Embedded (FFPE)

Please check the [product details page](#) for more images. Overall 4 images are available for ABIN396947.