

Datasheet for ABIN396956

anti-NR3C2 antibody



[Go to Product page](#)

3 Images

1 Publication

Overview

Quantity:	50 µL
Target:	NR3C2
Reactivity:	Human, Rat, Rabbit, Chicken
Host:	Mouse
Clonality:	Monoclonal
Conjugate:	This NR3C2 antibody is un-conjugated
Application:	Western Blotting (WB), Immunohistochemistry (IHC), Immunohistochemistry (Paraffin-embedded Sections) (IHC (p))

Product Details

Brand:	IHC-plus™
Immunogen:	Aldosterone. Type of Immunogen: Hapten
Clone:	H10E4C9F
Isotype:	IgG1
Specificity:	Recognizes human MR (mineralocorticoid receptor). Detects a band of ~116kD by Western Blot. Species cross-reactivity: Rat, rabbit and chicken.
Purification:	Protein G purified

Target Details

Target:	NR3C2
Alternative Name:	Mineralocorticoid Receptor (NR3C2 Products)
Background:	Name/Gene ID: NR3C2 Subfamily: NR3 Steroid receptor Family: NHR Synonyms: NR3C2, MCR, Mineralocorticoid receptor, NR3C2VIT, Aldosterone receptor, Mineralocorticoid receptor 1, MLR, MR
Gene ID:	4306
UniProt:	P08235
Pathways:	ACE Inhibitor Pathway , Nuclear Receptor Transcription Pathway , Intracellular Steroid Hormone Receptor Signaling Pathway , Steroid Hormone Mediated Signaling Pathway

Application Details

Application Notes:	Approved: IHC, IHC-P (1:50), WB (1:250) Usage: Immunohistochemistry: This antibody was validated for use in immunohistochemistry on a panel of 21 formalin-fixed, paraffin-embedded (FFPE) human tissues after heat induced antigen retrieval in pH 6.0 citrate buffer. After incubation with the primary antibody, slides were incubated with biotinylated secondary antibody, followed by alkaline phosphatase-streptavidin and chromogen. The stained slides were evaluated by a pathologist to confirm staining specificity. The optimal working dilution for LS-B3162 was determined to be 1:50. Function: Blocks the binding of aldosterone to the MR.
Comment:	Target Species of Antibody: Human
Restrictions:	For Research Use only

Handling

Format:	Liquid
Concentration:	Lot specific
Buffer:	PBS, pH 7.2, 0.05 % sodium azide.
Preservative:	Sodium azide

Handling

Precaution of Use: This product contains Sodium azide: a POISONOUS AND HAZARDOUS SUBSTANCE which should be handled by trained staff only.

Storage: 4 °C, -20 °C

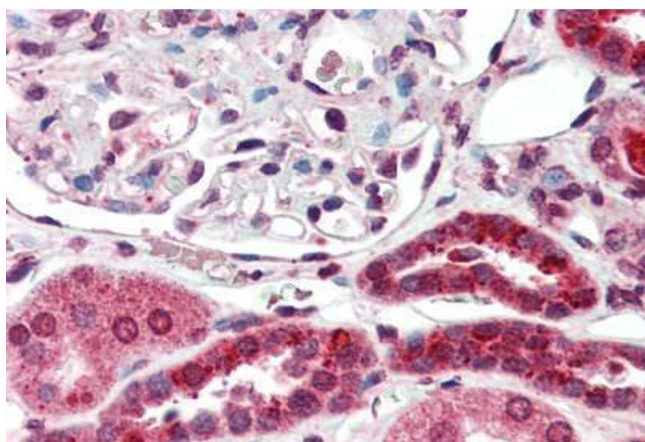
Storage Comment: Short term: 4°C. Long term: Store at -20°C. Avoid freeze-thaw cycles.

Publications

Product cited in: Pan, Hsuehou, Cornelissen-Guillaume, Jayaram, Wang, Tu, Halberg, Wu, Chua, Kastin: "Endothelial leptin receptor mutation provides partial resistance to diet-induced obesity." in: **Journal of applied physiology (Bethesda, Md. : 1985)**, Vol. 112, Issue 8, pp. 1410-8, (2012) ([PubMed](#)).

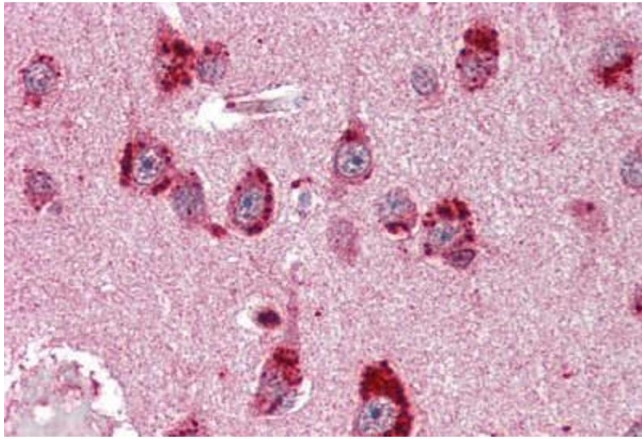
Wang, Yang, Du, Guan, Xu, Xu, Su, Miao: "Involvement of Leptin Receptor (LepRb)-STAT3 Signaling Pathway in Brain FTO Downregulation during Energy Restriction." in: **Molecular medicine (Cambridge, Mass.)**, (2011) ([PubMed](#)).

Images



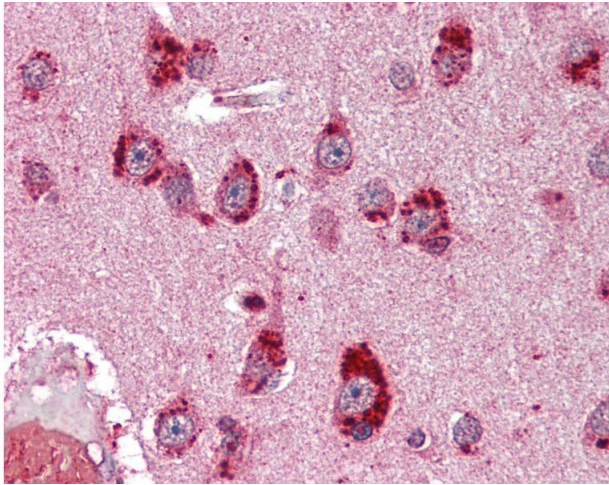
Immunohistochemistry (Paraffin-embedded Sections)

Image 1. Human Kidney (formalin-fixed, paraffin-embedded) stained with NR3C2 antibody ABIN396956 at 1:50 followed by biotinylated anti-mouse IgG secondary antibody ABIN481714, alkaline phosphatase-streptavidin and chromogen.



Immunohistochemistry (Paraffin-embedded Sections)

Image 2. Human Brain, Cortex (formalin-fixed, paraffin-embedded) stained with NR3C2 antibody ABIN396956 at 1:50 followed by biotinylated anti-mouse IgG secondary antibody ABIN481714, alkaline phosphatase-streptavidin and chromogen.



Immunohistochemistry

Image 3. Anti-NR3C2 antibody IHC of human brain, cortex. Immunohistochemistry of formalin-fixed, paraffin-embedded tissue after heat-induced antigen retrieval. Antibody dilution 1:50.