

Datasheet for ABIN396965
anti-Thyroglobulin antibody



[Go to Product page](#)

2 Images

Overview

Quantity:	0.05 mg
Target:	Thyroglobulin (TG)
Reactivity:	Human
Host:	Mouse
Clonality:	Monoclonal
Conjugate:	This Thyroglobulin antibody is un-conjugated
Application:	Immunohistochemistry (IHC), ELISA, Immunohistochemistry (Paraffin-embedded Sections) (IHC (p))

Product Details

Brand:	IHC-plus™
Immunogen:	Human Thyroglobulin. Type of Immunogen: Purified protein
Isotype:	IgG2b
Specificity:	Recognizes Thyroglobulin (hTg).
Purification:	Protein G purified

Target Details

Target:	Thyroglobulin (TG)
Alternative Name:	TG / Thyroglobulin (TG Products)

Target Details

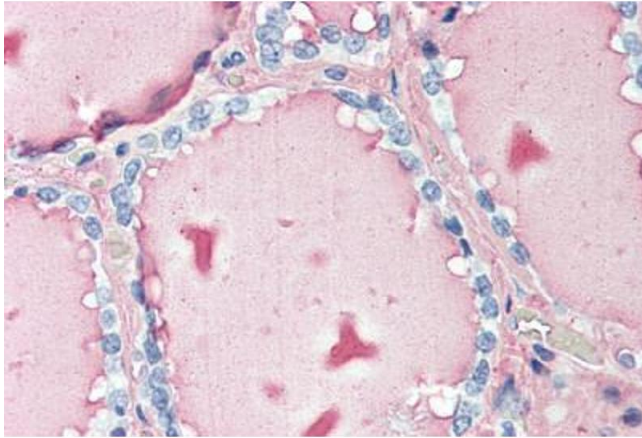
Background:	Name/Gene ID: TG Synonyms: TG, AITD3, TDH3, Thyroglobulin, TGN
Gene ID:	7038
UniProt:	P01266
Pathways:	Thyroid Hormone Synthesis

Application Details

Application Notes:	Approved: ELISA, IHC, IHC-P (10 µg/mL) Usage: Immunohistochemistry: This antibody was validated for use in immunohistochemistry on a panel of 21 formalin-fixed, paraffin-embedded (FFPE) human tissues after heat induced antigen retrieval in pH 6.0 citrate buffer. After incubation with the primary antibody, slides were incubated with biotinylated secondary antibody, followed by alkaline phosphatase-streptavidin and chromogen. The stained slides were evaluated by a pathologist to confirm staining specificity. The optimal working concentration for this antibody was determined to be 10 µg/mL.
Comment:	Target Species of Antibody: Human
Restrictions:	For Research Use only

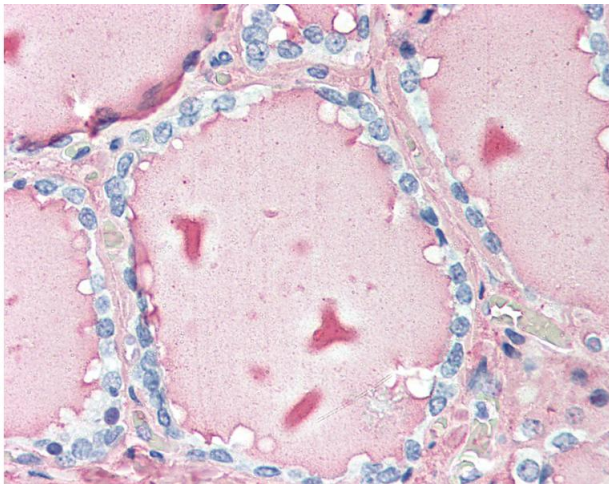
Handling

Format:	Liquid
Concentration:	Lot specific
Buffer:	PBS, pH 7.4, 0.05 % sodium azide, before the addition of glycerol to 40 %
Preservative:	Sodium azide
Precaution of Use:	This product contains Sodium azide: a POISONOUS AND HAZARDOUS SUBSTANCE which should be handled by trained staff only.
Handling Advice:	Avoid repeat freeze-thaw cycles.
Storage:	4 °C,-20 °C
Storage Comment:	Short term: 4°C. Long term: Store at -20°C. Avoid freeze-thaw cycles.



Immunohistochemistry (Paraffin-embedded Sections)

Image 1. Human Thyroid (formalin-fixed, paraffin-embedded) stained with TG antibody ABIN396965 at 10 ug/ml followed by biotinylated anti-mouse IgG secondary antibody ABIN481714, alkaline phosphatase-streptavidin and chromogen.



Immunohistochemistry

Image 2. Anti-TG / Thyroglobulin antibody IHC of human thyroid. Immunohistochemistry of formalin-fixed, paraffin-embedded tissue after heat-induced antigen retrieval. Antibody concentration 10 ug/ml.