

Datasheet for ABIN396968

**anti-GP1BB antibody****2** Images[Go to Product page](#)

## Overview

Quantity:	50 µg
Target:	GP1BB
Reactivity:	Human
Host:	Mouse
Clonality:	Monoclonal
Application:	Western Blotting (WB), Immunohistochemistry (IHC), Immunoprecipitation (IP), Immunohistochemistry (Paraffin-embedded Sections) (IHC (p))

## Product Details

Brand:	IHC-plus™
Immunogen:	Human platelets.  Type of Immunogen: Cells
Isotype:	IgG2b
Specificity:	Recognizes human GPIb, beta subunit (CD42c) of the human GPIb/IX/V (CD42a/CD42b/CD42c/CD42d) complex.
Purification:	Purified

## Target Details

Target:	GP1BB
Alternative Name:	GP1BB / CD42c ( <a href="#">GP1BB Products</a> )

## Target Details

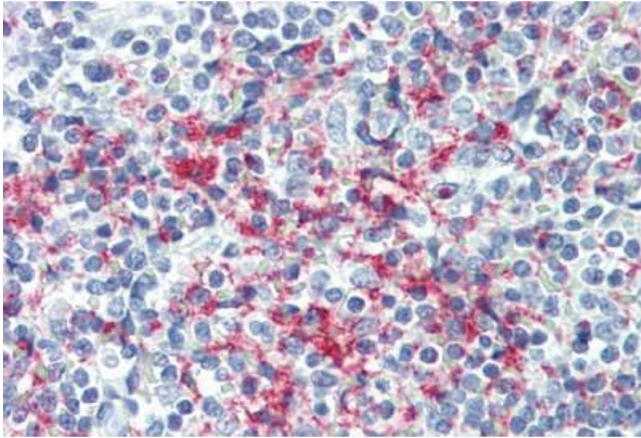
Background:	Name/Gene ID: GP1BB  Synonyms: GP1BB, Antigen CD42b-beta, BS, CD42c antigen, CD42C, Glycoprotein ib beta, GP-Ib beta, gp1BB, BDPLT1, GPIb-beta, GPIBB
Gene ID:	2812
UniProt:	<a href="#">P13224</a>

## Application Details

Application Notes:	Approved: IHC, IHC-P (1:50), IP (1:10), WB (1:10)  Usage: Immunohistochemistry: This antibody was validated for use in immunohistochemistry on a panel of 21 formalin-fixed, paraffin-embedded (FFPE) human tissues after heat induced antigen retrieval in pH 6.0 citrate buffer. After incubation with the primary antibody, slides were incubated with biotinylated secondary antibody, followed by alkaline phosphatase-streptavidin and chromogen. The stained slides were evaluated by a pathologist to confirm staining specificity. The optimal working concentration for this antibody was determined to be 1:50.
Comment:	Target Species of Antibody: Human
Restrictions:	For Research Use only

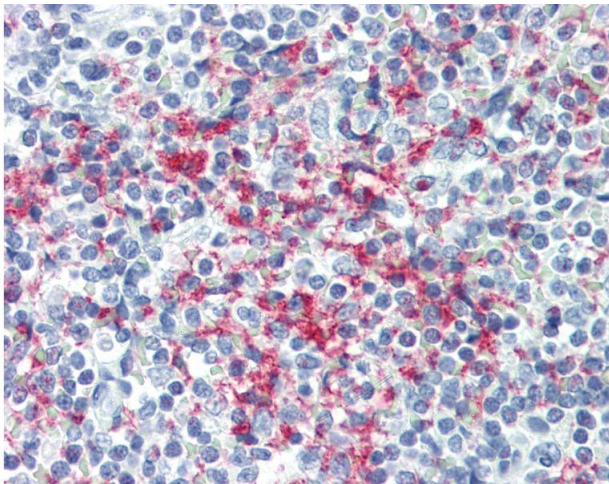
## Handling

Format:	Liquid
Concentration:	Lot specific
Buffer:	PBS, 0.05 % sodium azide
Preservative:	Sodium azide
Precaution of Use:	This product contains Sodium azide: a POISONOUS AND HAZARDOUS SUBSTANCE which should be handled by trained staff only.
Handling Advice:	avoid freeze thaw cycles.
Storage:	4 °C, -20 °C
Storage Comment:	Short term 4°C, long term aliquot and store at -20°C, avoid freeze-thaw cycles.



#### Immunohistochemistry (Paraffin-embedded Sections)

**Image 1.** Human Spleen (formalin-fixed, paraffin-embedded) stained with GP1BB antibody ABIN396968 at 1:50 followed by biotinylated anti-mouse IgG secondary antibody ABIN481714, alkaline phosphatase-streptavidin and chromogen.



#### Immunohistochemistry

**Image 2.** Anti-GP1BB / CD42c antibody IHC of human spleen. Immunohistochemistry of formalin-fixed, paraffin-embedded tissue after heat-induced antigen retrieval. Antibody dilution 1:50.