



[Go to Product page](#)

Datasheet for ABIN398391
anti-CXCL10 antibody

1 Image

Overview

Quantity:	100 µg
Target:	CXCL10
Reactivity:	Human
Host:	Mouse
Clonality:	Monoclonal
Conjugate:	This CXCL10 antibody is un-conjugated
Application:	Western Blotting (WB), ELISA

Product Details

Immunogen:	Purified recombinant human IP-10 expressed in PET32a
Clone:	4G12D7
Isotype:	IgG2b
Purification:	Protein G affinity column

Target Details

Target:	CXCL10
Alternative Name:	IP-10 (CXCL10 Products)
Background:	Mouse Anti-IP-10 Monoclonal Antibody reacts with recombinant human IP-10 fusion protein. The immunogen used to produce Mouse Anti IP-10 antibody was recombinant human IP-10 expressed in PET32a produced in E. coli.

Application Details

Application Notes: Working concentrations for specific applications should be determined by the investigator. Appropriate concentrations will be affected by several factors, including secondary antibody affinity, antigen concentration, sensitivity of detection method, temperature, and length of incubations, etc. The suitability of this antibody for applications other than those listed below has not been determined. The following concentration ranges are recommended starting points for this product.

ELISA: 0.1-1.0 µg/mL

Western blot: 1.0-2.0 µg/mL

Restrictions: For Research Use only

Handling

Format: Liquid

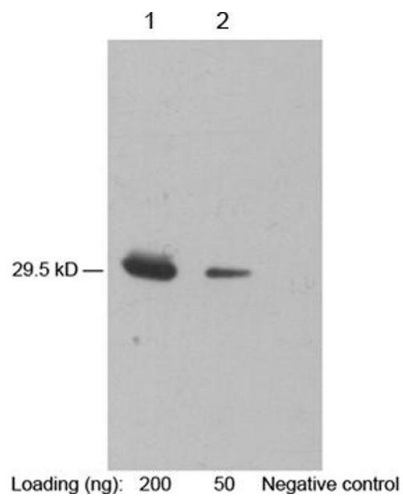
Buffer: PBS, pH 7.4, containing 0.02 % sodium azide

Preservative: Sodium azide

Precaution of Use: **WARNING:** Reagents contain sodium azide. Sodium azide is very toxic if ingested or inhaled. Avoid contact with skin, eyes, or clothing. Wear eye or face protection when handling. If skin or eye contact occurs, wash with copious amounts of water. If ingested or inhaled, contact a physician immediately. Sodium azide yields toxic hydrazoic acid under acidic conditions. Dilute azide-containing compounds in running water before discarding to avoid accumulation of potentially explosive deposits in lead or copper plumbing.

Storage: 4 °C/-20 °C

Storage Comment: The antibody is stable for 2-3 weeks if stored at 2-8°C. For long term storage, aliquot and store at -20°C or below. Avoid repeated freezing and thawing cycles.



Western Blotting

Image 1. Lane 1-2: 200 ng, 50 ng purified rHulP10 Primary antibody: 1 µg/mL Mouse Anti-IP-10 Monoclonal Antibody (ABIN398391) Secondary antibody: Goat Anti-Mouse IgG (H&L) [HRP] Polyclonal Antibody (ABIN398387, 1: 10,000) The signal was developed with LumiSensor™ HRP Substrate Kit (ABIN769939)