



Datasheet for ABIN398447

anti-S-Tag antibody

3 Images



[Go to Product page](#)

Overview

Quantity:	100 µg
Target:	S-Tag
Reactivity:	Please inquire
Host:	Rabbit
Clonality:	Polyclonal
Conjugate:	This S-Tag antibody is un-conjugated
Application:	ELISA, Western Blotting (WB)

Product Details

Immunogen:	S epitope tag peptide KETAAKFERQHMS conjugated - KLH
Sequence:	KETAAKFER QHMS
Isotype:	IgG
Specificity:	Rabbit Anti-S-tag Polyclonal Antibody specifically recognizes C-terminal, N-terminal, and internal S tagged fusion proteins.
Purification:	Immunoaffinity chromatography

Target Details

Target:	S-Tag
Abstract:	S-Tag Products
Target Type:	Tag

Target Details

Background: Rabbit Anti-S-tag Polyclonal Antibody is supplied as a 40 µg aliquot at a concentration of 1 mg/ml in PBS, pH 7.4, containing 0.02% sodium azide. It is purified by immunoaffinity chromatography.

Application Details

Application Notes: Working concentrations for specific applications should be determined by the investigator. The appropriate concentrations may be affected by secondary antibody affinity, antigen concentration, the sensitivity of the method of detection, temperature, the length of the incubations, and other factors. The suitability of this antibody for applications other than those listed below has not been determined. The following concentration ranges are recommended starting points for this product.

ELISA: 0.05-0.2 µg/mL

Western blot: 0.1-1.0 µg/mL Western blot using ONE-HOUR Western™ Kit: For quick results, ONE-HOUR Western™ Kit is recommended. 10 µg of this antibody is mixed with 10 mL of WB solution for 8 cm x 8 cm membrane. Other applications: user-optimized

Restrictions: For Research Use only

Handling

Format: Lyophilized

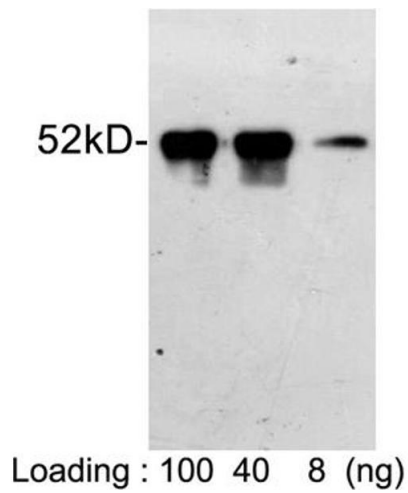
Buffer: PBS, pH 7.4, containing 0.02 % sodium azide.

Preservative: Sodium azide

Precaution of Use: WARNING: Reagents contain sodium azide. Sodium azide is very toxic if ingested or inhaled. Avoid contact with skin, eyes, or clothing. Wear eye or face protection when handling. If skin or eye contact occurs, wash with copious amounts of water. If ingested or inhaled, contact a physician immediately. Sodium azide yields toxic hydrazoic acid under acidic conditions. Dilute azide-containing compounds in running water before discarding to avoid accumulation of potentially explosive deposits in lead or copper plumbing.

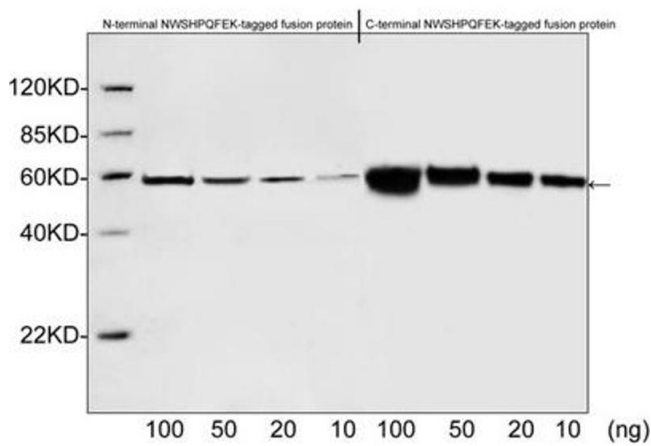
Storage: 4 °C/-20 °C

Storage Comment: The antibody is stable in lyophilized form if stored at -20°C or below. The reconstituted antibody can be stored for 2-3 weeks at 2-8°C. For long term storage, aliquot and store at -20°C or below. Avoid repeated freezing and thawing cycles.



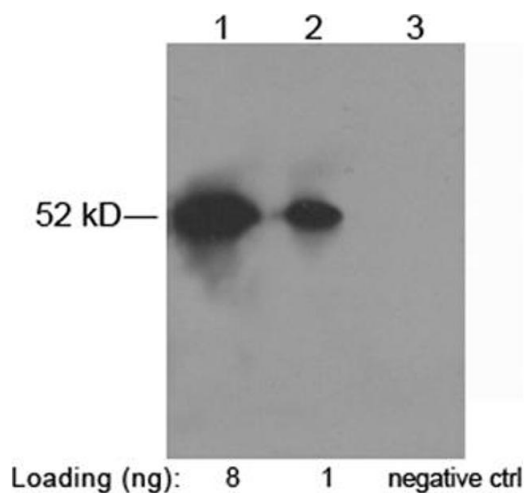
Western Blotting

Image 1. Loading: S-tag fusion protein expressed in E. coli cell lysate Primary antibody: 1 µg/mL Rabbit Anti-S-tag Polyclonal Antibody (ABIN398447) The result was developed with One-Step Western™ Complete Kit (Rabbit) (ABIN491509)



Western Blotting

Image 2. Western blot analysis of S-tagged fusion proteins expressed in E. coli cell lysate using Rabbit Anti-S-tag Polyclonal Antibody (ABIN398447, 1 µg/mL) The signal was developed with IRDye™ 800 Conjugated Goat Anti-Rabbit IgG.



Western Blotting

Image 3. Lane 1-2: S-tag fusion protein in CHO cell lysate (~52kD) Lane 3: Negative CHO cell lysate Primary antibody: 1 µg/mL Rabbit Anti-S-tag Polyclonal Antibody (ABIN398447) Secondary antibody: Goat Anti-Rabbit IgG (H&L) [HRP] Polyclonal Antibody (ABIN398323, 1: 10,000) The signal was developed with LumiSensor™ HRP Substrate Kit (ABIN769939)