



[Go to Product page](#)

Datasheet for ABIN398566

anti-CRE Recombinase (CRE) antibody

1 Image

2 Publications

Overview

Quantity:	40 µg
Target:	CRE Recombinase (CRE)
Reactivity:	Bacteriophage P1
Host:	Mouse
Clonality:	Monoclonal
Conjugate:	Un-conjugated
Application:	Western Blotting (WB), ELISA

Product Details

Immunogen:	Purified recombinant Cre recombinase protein
Clone:	1D8H3
Isotype:	IgG2a
Specificity:	Negative Control: E. coli. and cell lysate (not mammalian) It's not suitable for the analysis of mammalian cell lysate.
Cross-Reactivity (Details):	Negative Control: E. coli. and cell lysate (not mammalian) It's not suitable for the analysis of mammalian cell lysate.
Purification:	Protein A affinity column

Target Details

Target:	CRE Recombinase (CRE)
---------	-----------------------

Target Details

Alternative Name: Cre Recombinase ([CRE Products](#))

Target Type: Phage Protein

Background: Cre-recombinase is a 38 kDa DNA recombinase derived from the P1 bacteriophage. It is highly specific to a 34 bp DNA sequence (loxP) found in P1 DNA. It catalyzes site-specific recombination between two 34-base-pair LOXP sites. Its role is to maintain the phage genome as a monomeric unit-copy plasmid in the lysogenic state. It is homotetramer when bound to DNA and belongs to the phage integrase family. Mouse Anti-Cre recombinase Monoclonal Antibody is an important tool for the identification of Cre recombinase in different protein expression systems.

Application Details

Application Notes: Working concentrations for specific applications should be determined by the investigator. The chart below may serve as a useful guideline, but secondary antibody affinity, antigen concentration, temperature, incubation time, and the sensitivity of the detection methods can all affect the ideal working concentration. We have not yet determined the suitability of this antibody for other applications. The following concentration ranges are recommended starting points for this product.

ELISA: 0.05-0.2 µg/mL Western blot: 0.1-1.0 µg/mL Other applications: user-optimized

Restrictions: For Research Use only

Handling

Format: Lyophilized

Buffer: PBS, pH 7.4, containing 1 % BSA and 0.02 % sodium azide

Preservative: Sodium azide

Precaution of Use: **WARNING:** Reagents contain sodium azide. Sodium azide is very toxic if ingested or inhaled. Avoid contact with skin, eyes, or clothing. Wear eye or face protection when handling. If skin or eye contact occurs, wash with copious amounts of water. If ingested or inhaled, contact a physician immediately. Sodium azide yields toxic hydrazoic acid under acidic conditions. Dilute azide-containing compounds in running water before discarding to avoid accumulation of potentially explosive deposits in lead or copper plumbing.

Storage: 4 °C/-20 °C

Handling

Storage Comment: The antibody is stable in lyophilized form if stored at -20°C or below. The reconstituted antibody can be stored for 2-3 weeks at 2-8°C. For long term storage, aliquot and store at -20°C or below. Avoid repeated freezing and thawing cycles.

Publications

Product cited in: Lin, Liu, Sun, Yuan, Zhang, Chen: "Establishment and characterization of a tamoxifen-mediated reversible immortalized mouse dental papilla cell line." in: **In vitro cellular & developmental biology. Animal**, Vol. 49, Issue 2, pp. 114-21, (2013) ([PubMed](#)).

Kaushik, Arias, Kwon, Lopez, Athonvarangkul, Sahu, Schwartz, Pessin, Singh: "Loss of autophagy in hypothalamic POMC neurons impairs lipolysis." in: **EMBO reports**, Vol. 13, Issue 3, pp. 258-65, (2012) ([PubMed](#)).

Images

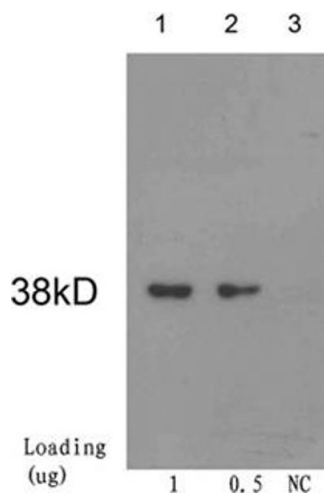


Image 1. Loading: Cre recombinase protein
Primary antibody: 1 µg/mL Mouse Anti-Cre Recombinase Monoclonal Antibody (ABIN398566)
Secondary antibody: Goat Anti-Mouse IgG (H&L) [HRP] Polyclonal Antibody (ABIN398387, 1: 10,000)
The signal was developed with LumiSensor™ HRP Substrate Kit (ABIN769939)