

Datasheet for ABIN399993
anti-LPAR3 antibody (Internal Region)[Go to Product page](#)

3 Images

Overview

Quantity:	50 µg
Target:	LPAR3
Binding Specificity:	Internal Region
Reactivity:	Human, Monkey
Host:	Rabbit
Clonality:	Polyclonal
Conjugate:	This LPAR3 antibody is un-conjugated
Application:	ELISA, Immunohistochemistry (IHC), Immunohistochemistry (Paraffin-embedded Sections) (IHC (p))

Product Details

Brand:	IHC-plus™
Immunogen:	Synthetic 16 amino acid peptide from internal region of human EDG7. Percent identity with other species by BLAST analysis: Human, Gorilla, Gibbon, Monkey (100%), Panda, Dog, Bat, Elephant (94%), Mouse, Rat, Horse, Hamster (88%), Pig, Bovine (81%). Type of Immunogen: Synthetic peptide
Specificity:	Human EDG7. BLAST analysis of the peptide immunogen showed no homology with other human proteins.
Predicted Reactivity:	Percent identity with other species by BLAST analysis: Human, Gorilla, Gibbon, Monkey (100%) Panda, Dog, Bat, Elephant (94%) Mouse, Rat, Horse, Hamster (88%) Pig, Bovine (81%).

Product Details

Purification: Immunoaffinity purified

Target Details

Target: LPAR3

Alternative Name: LPAR3 / LPA3 / EDG7 ([LPAR3 Products](#))

Background: Name/Gene ID: LPAR3

Subfamily: Lysophospholipid/Lysosphingolipid

Family: GPCR

Synonyms: LPAR3, EDG7, Edg-7, LPA receptor 3, HOFNH30, LPA3, RP4-678I3, LP-A3, LPA receptor EDG7, LPA-3

Gene ID: 23566

Pathways: [Regulation of Cell Size](#)

Application Details

Application Notes: Approved: ELISA, IHC, IHC-P (5 µg/mL)

Usage: Immunohistochemistry: This antibody was validated for use in immunohistochemistry on a panel of 21 formalin-fixed, paraffin-embedded (FFPE) human tissues after proteinase K antigen retrieval. After incubation with the primary antibody, slides were incubated with biotinylated secondary antibody, followed by alkaline phosphatase-streptavidin and chromogen. The stained slides were evaluated by a pathologist to confirm staining specificity. The optimal working concentration for this antibody was determined to be 5 µg/mL.

Comment: Target Species of Antibody: Human

Restrictions: For Research Use only

Handling

Format: Liquid

Concentration: Lot specific

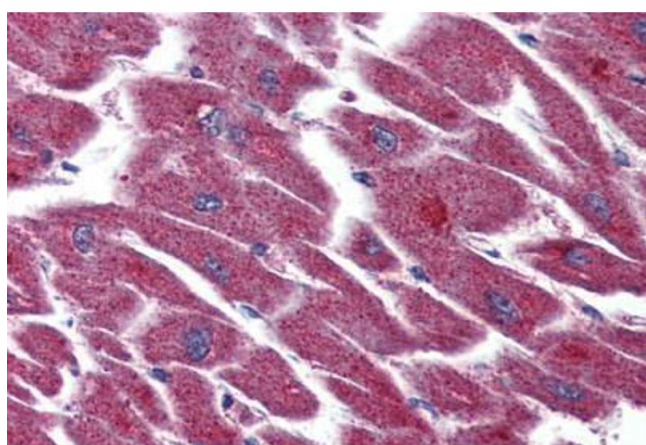
Buffer: PBS, less than 0.1 % sodium azide.

Preservative: Sodium azide

Handling

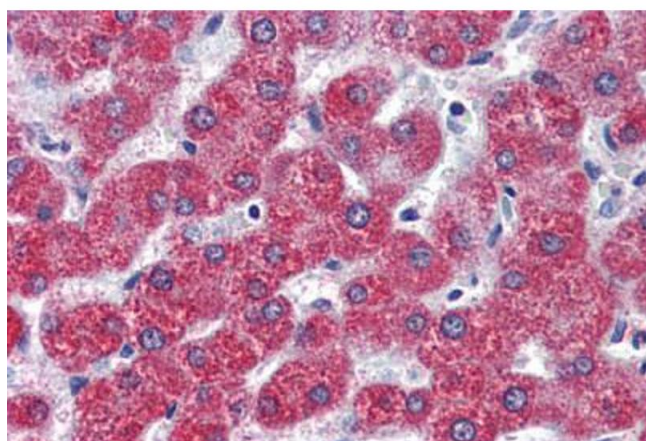
Precaution of Use:	This product contains Sodium azide: a POISONOUS AND HAZARDOUS SUBSTANCE which should be handled by trained staff only.
Storage:	4 °C, -20 °C
Storage Comment:	Aliquot and store undiluted at -20°C or below for up to 1 year. Can be stored undiluted at 4°C for up to 1 month. Avoid freeze-thaw cycles.
Expiry Date:	12 months

Images



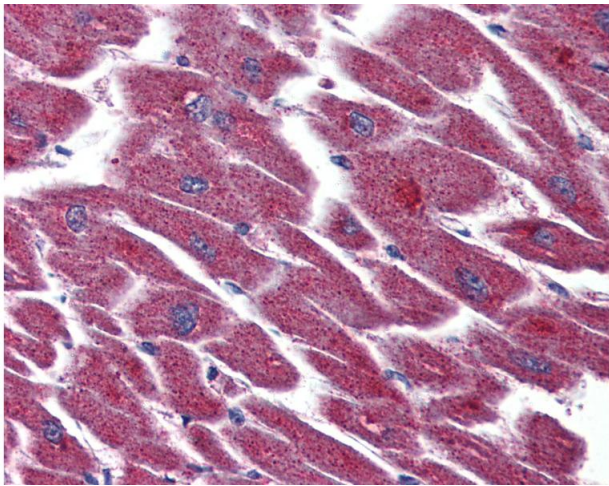
Immunohistochemistry (Paraffin-embedded Sections)

Image 1. Human Heart (formalin-fixed, paraffin-embedded) stained with LPAR3 antibody ABIN399993 at 5 ug/ml followed by biotinylated goat anti-rabbit IgG secondary antibody ABIN481713, alkaline phosphatase-streptavidin and chromogen.



Immunohistochemistry (Paraffin-embedded Sections)

Image 2. Human Liver (formalin-fixed, paraffin-embedded) stained with LPAR3 antibody ABIN399993 at 5 ug/ml followed by biotinylated goat anti-rabbit IgG secondary antibody ABIN481713, alkaline phosphatase-streptavidin and chromogen.



Immunohistochemistry

Image 3. Anti-EDG7 antibody IHC of human heart. Immunohistochemistry of formalin-fixed, paraffin-embedded tissue after heat-induced antigen retrieval.