



[Go to Product page](#)

Datasheet for ABIN400457

## anti-LAMa4 antibody

### 1 Image

#### Overview

Quantity:	100 µg
Target:	LAMa4
Reactivity:	Human
Host:	Mouse
Clonality:	Monoclonal
Conjugate:	This LAMa4 antibody is un-conjugated
Application:	Western Blotting (WB), Immunohistochemistry (IHC), ELISA, Immunoprecipitation (IP)

#### Product Details

Immunogen:	Immunoaffinity-purified Laminin 411 (laminin-8(α4β1γ1) from platelets
Clone:	3H2
Isotype:	IgG1
Specificity:	Humanlaminin α4
Purification:	IgG fraction purifiedwith Protein G affinity chromatography

#### Target Details

Target:	LAMa4
Alternative Name:	Laminin a4 ( <a href="#">LAMa4 Products</a> )
Background:	Lamininsare a family of large heterotrimeric proteins that promote cell adhesion andmigration via integrins and other cell-surface receptors. They are majorcomponents of basement

## Target Details

---

membranes of blood vessels and other tissue compartments, and are synthesized by numerous cell types. Through combination, laminin chains constitute 15 laminin isoforms. Laminin isoforms, particularly their  $\alpha$  chain, are expressed in a cell- and tissue-specific manner, and are differentially recognized by integrins

UniProt: [Q16363](#)

Pathways: [Brown Fat Cell Differentiation](#)

## Application Details

---

Application Notes: ELISA titer 1:64 000, Western immunoblotting, reduced conditions, dilution 1:1 000 -1:2 000, Immunoprecipitation, dilution 1:20, Immunohistochemistry, dilution 1:100 -1:200. Monoclonal antibody working titer has to be established practically for each particular antigen and assay format

Restrictions: For Research Use only

## Handling

---

Format: Liquid

Concentration: 1 mg/ml

Buffer: PBS pH 7.4, with 0.1%

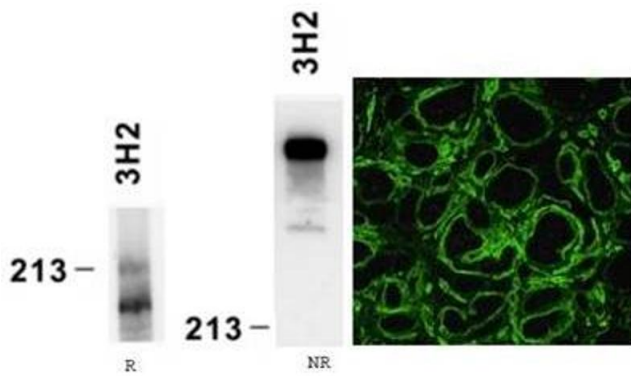
Preservative: Sodium azide

Precaution of Use: This product contains sodium azide: a POISONOUS AND HAZARDOUS SUBSTANCE which should be handled by trained staff only.

Handling Advice: Divide antibody into aliquots prior usage. Avoid multiple freeze-thaw cycles.

Storage: -20 °C

Storage Comment: This product is shipped in non-frozen liquid form in ambient conditions



### Western Blotting

**Image 1.** Reactivity of laminin alpha4 chain specific monoclonal antibody 3H2 on human platelet lysate by Western blotting (reducing, R and nonreducing, NR conditions) and on human embryonic kidney preparation