



## Datasheet for ABIN400460 anti-Laminin 5 antibody



[Go to Product page](#)

### 1 Image

#### Overview

Quantity:	100 µg
Target:	Laminin 5 (LN-5)
Reactivity:	Human
Host:	Mouse
Clonality:	Monoclonal
Conjugate:	This Laminin 5 antibody is un-conjugated
Application:	Immunohistochemistry (IHC), ELISA, Immunoprecipitation (IP)

#### Product Details

Immunogen:	Laminin purified from human placenta (Chemicon)
Clone:	4B12
Isotype:	IgG1
Specificity:	Human laminin α5
Purification:	IgG fraction purified with Protein G affinity chromatography

#### Target Details

Target:	Laminin 5 (LN-5)
Alternative Name:	laminin α5 ( <a href="#">LN-5 Products</a> )
Background:	Laminins are a family of large heterotrimeric proteins that promote cell adhesion and migration via integrins and other cell-surface receptors. They are major components of basement

## Target Details

---

membranes of blood vessels and other tissue compartments, and are synthesized by numerous cell types. Through combination, laminin chains constitute 15 laminin isoforms. Laminin isoforms, particularly their  $\alpha$  chain, are expressed in a cell- and tissue-specific manner, and are differentially recognized by integrins

## Application Details

---

**Application Notes:** ELISA titer 1:8000, Immunoprecipitation, dilution 1:20. This antibody does not work in WB. Monoclonal antibody working titer has to be established practically for each particular antigen and assay format

**Restrictions:** For Research Use only

## Handling

---

**Format:** Liquid

**Concentration:** 1 mg/ml

**Buffer:** PBS pH 7.4, with 0.1%

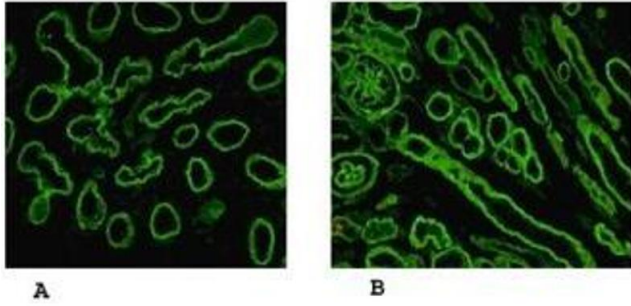
**Preservative:** Sodium azide

**Precaution of Use:** This product contains sodium azide: a POISONOUS AND HAZARDOUS SUBSTANCE which should be handled by trained staff only.

**Handling Advice:** Divide antibody into aliquots prior usage. Avoid multiple freeze-thaw cycles.

**Storage:** -20 °C

**Storage Comment:** This product is shipped in non-frozen liquid form in ambient conditions



### Immunofluorescence

**Image 1.** Reactivity of laminin  $\alpha 5$  chain specific monoclonal antibody 4B12 on human embryonic lung alveolae epithelium (A) and kidney (B) preparation