

Datasheet for ABIN401388

anti-RAB11FIP3 antibody (C-Term)[Go to Product page](#)**1** Image

Overview

Quantity:	0.1 mg
Target:	RAB11FIP3
Binding Specificity:	C-Term
Reactivity:	Human, Mouse, Rat
Host:	Rabbit
Clonality:	Polyclonal
Conjugate:	This RAB11FIP3 antibody is un-conjugated
Application:	Western Blotting (WB), Enzyme Immunoassay (EIA)

Product Details

Immunogen:	Recombinant protein corresponding to amino acids spanning the carboxyl terminal one- third of human FIP3
Isotype:	IgG
Specificity:	This antibody is directed against FIP3 protein.
Cross-Reactivity (Details):	Species reactivity (expected):Mouse, Rat. Species reactivity (tested):Human.
Purification:	Affinity chromatography

Target Details

Target:	RAB11FIP3
---------	-----------

Target Details

Alternative Name:	RAB11FIP3 (RAB11FIP3 Products)
Background:	<p>Rab11 Family-Interacting Protein 3 (FIP3)/Arfophilin-1 and FIP4/Arfophilin-2 are dual effectors for Rab11 and the ADP-ribosylation factor Arf6. Rab11 and Arf6 are involved in membrane delivery from recycling endosomes to the plasma membrane during cytokinesis. The dual Rab11/Arf6 binding proteins, FIP3 and FIP4, function in the delivery of recycling endosomes to the cleavage furrow and are, together with Rab11, essential for completion of abscission, the terminal step of cytokinesis. An interaction between Rab11-FIP3 and ASAP1 has also been identified (personal communication, P. Randazzo, CCR-NCI, Bethesda, MD). ASAP1 is an Arf GTPase-activating protein that has been implicated in the invasive properties of uveal melanoma and mammary carcinoma. Synonyms: ARF01, Arfophilin-1, Eferin, FIP3-Rab11, KIAA0665, MU-MB-17.148, Rab11 family-interacting protein 3, Rab11-FIP3</p>
Gene ID:	9727
NCBI Accession:	NP_001135744
UniProt:	O75154

Application Details

Application Notes:	<p>ELISA: 1/1,000 - 1/3,000. Western Blot: 1/200 - 1/2,000.</p> <p>Other applications not tested.</p> <p>Optimal dilutions are dependent on conditions and should be determined by the user.</p>
Restrictions:	For Research Use only

Handling

Concentration:	1.19 mg/mL (by UV absorbance at 280 nm)
Buffer:	0.02 M Potassium Phosphate, 0.15 M Sodium Chloride, pH 7.2 containing 0.01 % (w/v) Sodium Azide
Preservative:	Sodium azide
Precaution of Use:	This product contains sodium azide: a POISONOUS AND HAZARDOUS SUBSTANCE which should be handled by trained staff only.
Handling Advice:	Avoid repeated freezing and thawing.
Storage:	-20 °C

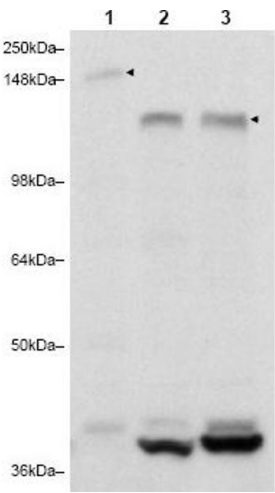


Image 1.