

Datasheet for ABIN401437  
**anti-PTENP1 antibody (N-Term)**



[Go to Product page](#)

1 Image

## Overview

Quantity:	0.1 mg
Target:	PTENP1
Binding Specificity:	N-Term
Reactivity:	Human, Chimpanzee, Dog, Green Pufferfish, Macaque, Mouse, Rat, Zebrafish (Danio rerio)
Host:	Rabbit
Clonality:	Polyclonal
Conjugate:	This PTENP1 antibody is un-conjugated
Application:	Western Blotting (WB), Enzyme Immunoassay (EIA)

## Product Details

Immunogen:	Purified peptide corresponding to amino acids near the N-terminal end of human PTEN-P1 protein
Isotype:	IgG
Cross-Reactivity (Details):	Species reactivity (expected): Mouse, Rat, Canine, Macaque, Chimpanzee, Opossum, Zebrafish, Green pufferfish, Platypus. Species reactivity (tested): Human.
Purification:	Affinity chromatography

## Target Details

Target:	PTENP1
Alternative Name:	PTENP1 ( <a href="#">PTENP1 Products</a> )

## Target Details

---

**Background:** This gene (PTENP1) is a highly homologous pseudogene of PTEN. PTEN was identified as a tumor suppressor that is mutated in a large number of cancers at high frequency. PTEN is a phosphatidylinositol-3,4,5-trisphosphate 3-phosphatase. It contains a tension like domain as well as a catalytic domain similar to that of the dual specificity protein tyrosine phosphatases. Unlike most of the protein tyrosine phosphatases, this protein preferentially dephosphorylates phosphoinositide substrates. It negatively regulates intracellular levels of phosphatidylinositol-3,4,5-trisphosphate in cells and functions as a tumor suppressor by negatively regulating AKT/PKB signaling pathway. Synonyms: PTEN-rs, PTEN2, PTH2, Phosphatase and tensin homolog 2, Phosphatase and tensin homolog pseudogene 1, psiPTEN

**Gene ID:** 9606

**UniProt:** [O43460](#)

## Application Details

---

**Application Notes:** ELISA: 1/160,000. Western Blot: 1/500 to 1/2,000.  
Other applications not tested.  
Optimal dilutions are dependent on conditions and should be determined by the user.

**Restrictions:** For Research Use only

## Handling

---

**Concentration:** 0.73 mg/mL (by UV absorbance at 280 nm)

**Buffer:** 0.02 M Potassium Phosphate, 0.15 M Sodium Chloride, pH 7.2 containing 0.01 % (w/v) Sodium Azide

**Preservative:** Sodium azide

**Precaution of Use:** This product contains sodium azide: a POISONOUS AND HAZARDOUS SUBSTANCE which should be handled by trained staff only.

**Handling Advice:** Avoid repeated freezing and thawing.

**Storage:** -20 °C

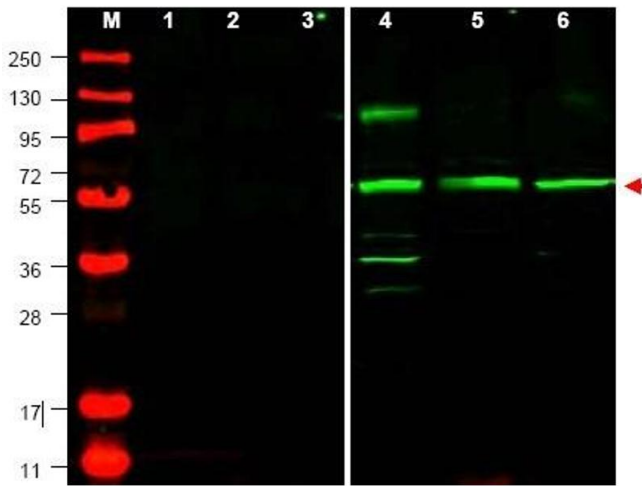


Image 1.