

Datasheet for ABIN401475  
**anti-UBE2J2 antibody (Internal Region)**[Go to Product page](#)

## 2 Images

## Overview

Quantity:	0.1 mg
Target:	UBE2J2
Binding Specificity:	Internal Region
Reactivity:	Human, Mouse, Rat, Dog, Horse, Cow, Duckbill (Platypus), Macaque, Opossum, Salmon, Xenopus laevis
Host:	Rabbit
Clonality:	Polyclonal
Conjugate:	This UBE2J2 antibody is un-conjugated
Application:	Western Blotting (WB), Immunoprecipitation (IP), Enzyme Immunoassay (EIA)

## Product Details

Immunogen:	Synthetic peptide corresponding to an internal region of the human Ube2j2 protein
Isotype:	IgG
Specificity:	This antibody is directed against Ube2j2 protein.
Cross-Reactivity (Details):	Species reactivity (expected):Horse, Opossum, Cattle, Canine, Mouse, Rat, Macaque, Salmon, Chicken, Zebra finch, Xenopus, Platypus. Species reactivity (tested):Human.
Purification:	Affinity chromatography

## Target Details

Target:	UBE2J2
---------	--------

## Target Details

Alternative Name:	UBE2J2 ( <a href="#">UBE2J2 Products</a> )
Background:	Ube2j2 and Ube2j1 are homologs of the yeast ubiquitinconjugating enzyme UBC6, which catalyzes the covalent attachment of ubiquitin to other proteins. These proteins constitute a distinct family of ubiquitin-conjugating enzymes sharing a conserved non-canonical active site sequence and a C-terminal transmembrane domain. By analogy with yeast UBC6, Ube2j1 and Ube2j2 are localized to the endoplasmic reticulum and seem to function in the selective degradation of misfolded membrane proteins and in general mediation of the stress response.Synonyms: NCUBE2, Non-canonical ubiquitin-conjugating enzyme 2, Ubiquitin-conjugating enzyme E2 J2
Gene ID:	118424
NCBI Accession:	<a href="#">NP_477515</a>
UniProt:	<a href="#">Q8N2K1</a>

## Application Details

Application Notes:	ELISA: 1/200,000 - 1/250,000. Western Blot: 1/150 - 1/200. Other applications not tested. Optimal dilutions are dependent on conditions and should be determined by the user.
Restrictions:	For Research Use only

## Handling

Concentration:	0.64 mg/mL (by UV absorbance at 280 nm)
Buffer:	0.02 M Potassium Phosphate, 0.15 M Sodium Chloride, pH 7.2 containing 0.01 % (w/v) Sodium Azide
Preservative:	Sodium azide
Precaution of Use:	This product contains sodium azide: a POISONOUS AND HAZARDOUS SUBSTANCE which should be handled by trained staff only.
Handling Advice:	Avoid repeated freezing and thawing.
Storage:	-20 °C

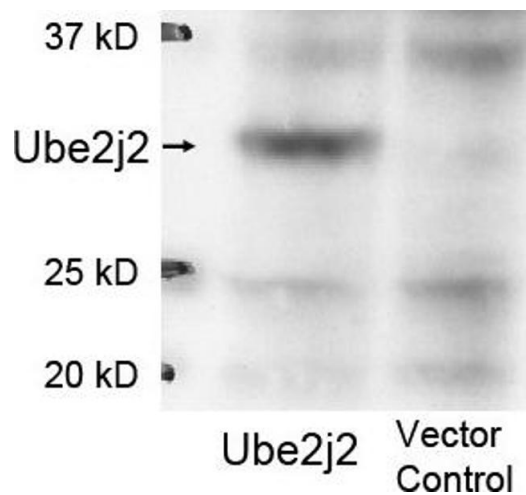


Image 1.

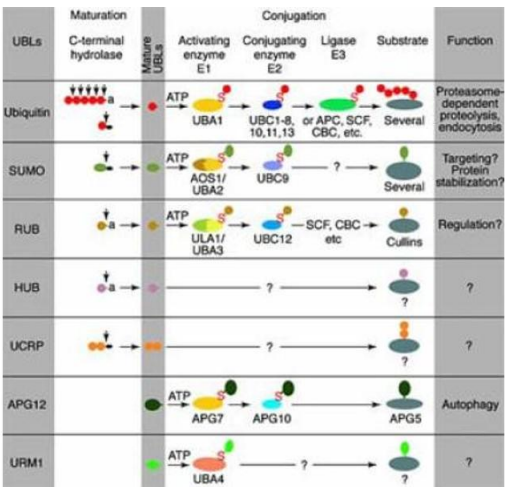


Image 2.