

Datasheet for ABIN410771
anti-GPR27 antibody (Internal Region)[Go to Product page](#)

3 Images

Overview

Quantity:	50 µg
Target:	GPR27
Binding Specificity:	Internal Region
Reactivity:	Human, Monkey
Host:	Rabbit
Clonality:	Polyclonal
Application:	ELISA, Immunohistochemistry (IHC), Immunohistochemistry (Paraffin-embedded Sections) (IHC (p))

Product Details

Brand:	IHC-plus™
Immunogen:	Synthetic 18 amino acid peptide from internal region of human GPR27. Percent identity with other species by BLAST analysis: Human, Gorilla, Marmoset, Elephant, Panda (100%), Mouse, Rat (94%), Opossum, Platypus (89%), Chicken, Xenopus (83%). Type of Immunogen: Synthetic peptide
Specificity:	Human GPR27. BLAST analysis of the peptide immunogen showed no homology with other human proteins.
Predicted Reactivity:	Percent identity with other species by BLAST analysis: Human, Gorilla, Marmoset, Elephant, Panda (100%) Mouse, Rat (94%) Opossum, Platypus (89%) Chicken, Xenopus (83%).
Purification:	Immunoaffinity purified

Target Details

Target:	GPR27
Alternative Name:	GPR27 (GPR27 Products)
Background:	Name/Gene ID: GPR27 Subfamily: Orphan-A Family: GPCR Synonyms: GPR27, G protein-coupled receptor 27, SREB1
Gene ID:	2850

Application Details

Application Notes:	Approved: ELISA, IHC, IHC-P (10 µg/mL) Usage: Immunohistochemistry: This antibody was validated for use in immunohistochemistry on a panel of 21 formalin-fixed, paraffin-embedded (FFPE) human tissues after proteinase K antigen retrieval. After incubation with the primary antibody, slides were incubated with biotinylated secondary antibody, followed by alkaline phosphatase-streptavidin and chromogen. The stained slides were evaluated by a pathologist to confirm staining specificity. The optimal working concentration for this antibody was determined to be 10 µg/mL.
Comment:	Target Species of Antibody: Human
Restrictions:	For Research Use only

Handling

Format:	Liquid
Concentration:	Lot specific
Buffer:	PBS, less than 0.1 % sodium azide.
Preservative:	Sodium azide
Precaution of Use:	This product contains Sodium azide: a POISONOUS AND HAZARDOUS SUBSTANCE which should be handled by trained staff only.
Storage:	4 °C, -20 °C
Storage Comment:	Aliquot and store undiluted at -20°C or below for up to 1 year. Can be stored undiluted at 4°C for up to 1 month. Avoid freeze-thaw cycles.

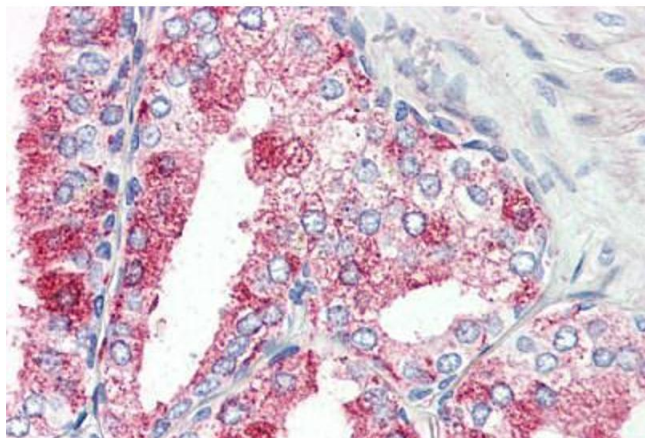
**Immunohistochemistry (Paraffin-embedded Sections)**

Image 1. Human Prostate (formalin-fixed, paraffin-embedded) stained with GPR27 antibody ABIN410771 followed by biotinylated goat anti-rabbit IgG secondary antibody ABIN481713, alkaline phosphatase-streptavidin and chromogen.

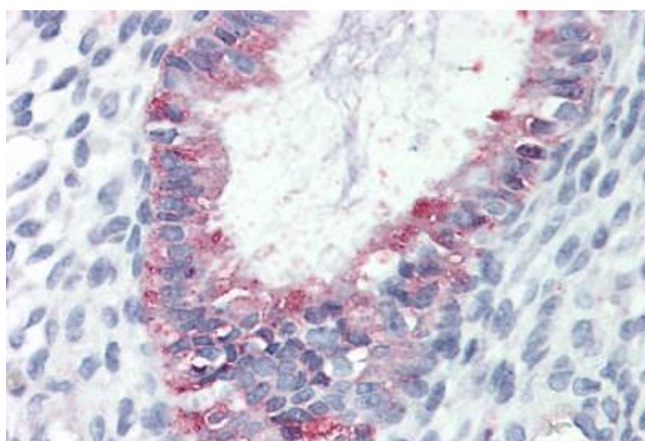
**Immunohistochemistry (Paraffin-embedded Sections)**

Image 2. Human Uterus (formalin-fixed, paraffin-embedded) stained with GPR27 antibody ABIN410771 followed by biotinylated goat anti-rabbit IgG secondary antibody ABIN481713, alkaline phosphatase-streptavidin and chromogen.

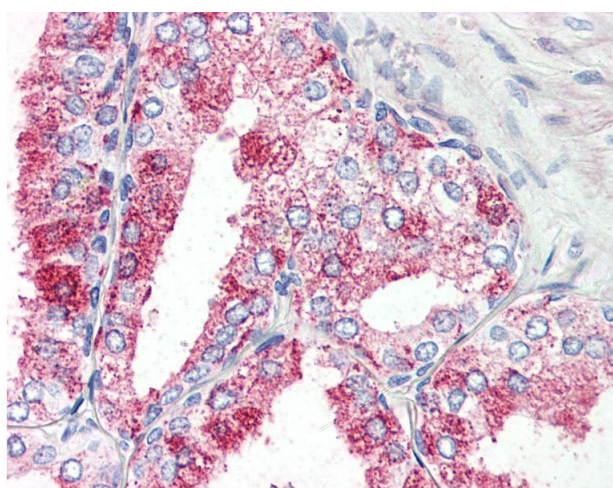
**Immunohistochemistry**

Image 3. Anti-GPR27 antibody IHC of human prostate. Immunohistochemistry of formalin-fixed, paraffin-embedded tissue after heat-induced antigen retrieval.