



[Go to Product page](#)

Datasheet for ABIN414248

## GNRH1 ELISA Kit

### 1 Image

#### Overview

Quantity:	96 tests
Target:	GNRH1
Reactivity:	Fish
Method Type:	Competition ELISA
Detection Range:	12.35 pg/mL - 1000 pg/mL
Minimum Detection Limit:	12.35 pg/mL
Application:	ELISA

#### Product Details

Purpose:	The ELISA kit is an enzyme immunoassay for the in vitro quantitative measurement of fish GnRH in serum, plasma and other biological fluids
Sample Type:	Plasma, Serum
Detection Method:	Colorimetric
Cross-Reactivity (Details):	No significant cross-reactivity or interference was observed.
Sensitivity:	5.39 pg/mL
Components:	Pre-coated, ready to use 96-well strip plate: 1 Standard (freeze dried): 2 Standard Diluent: 1 x 20ml Detection Reagent A: 1 x 120µl Detection Reagent B: 1 x 120µl Assay Diluent A (2 x concentrate): 1 x 6ml

## Product Details

---

Assay Diluent B(2 x concentrate): 1 x 6ml

TMB Substrate: 1 x 9ml

Stop Solution: 1 x 6ml

Wash Buffer(30 x concentrate): 1 x 20ml

Plate sealer: for 96 wells: 4

Material not included:

- Microplate reader with 450nm filter.
- Precision single or multi-channel pipettes and disposable tips.
- Eppendorf Tubes for diluting samples.
- Deionized or distilled water.
- Absorbent paper for blotting the microtiter plate.
- Container for Wash Solution

## Target Details

---

Target: GNRH1

Alternative Name: Gonadotropin Releasing Hormone (GnRH) ([GNRH1 Products](#))

Pathways: [Hormone Activity](#)

## Application Details

---

Application Notes:

- Limited by the current condition and scientific technology, we cannot completely conduct the comprehensive identification and analysis on the raw material provided by suppliers. So there might be some qualitative and technical risks to use the kit.
- The final experimental results will be closely related to validity of the products, operation skills of the end users and the experimental environments. Please make sure that sufficient samples are available.
- Kits from different batches may be a little different in detection range, sensitivity and color developing time.
- Do not mix or substitute reagents from one kit lot to another. Use only the reagents supplied by manufacturer.
- Protect all reagents from strong light during storage and incubation. All the bottle caps of reagents should be covered tightly to prevent the evaporation and contamination of microorganism.
- There may be some foggy substance in the wells when the plate is opened at the first time. It will not have any effect on the final assay results. Do not remove microtiter plate from the storage bag until needed.
- Wrong operations during the reagents preparation and loading, as well as incorrect parameter setting for the plate reader may lead to incorrect results. A microplate plate reader with a bandwidth of 10nm or less and an optical density range of 0-3 O.D. or greater at 450 ± 10nm wavelength is acceptable for use in absorbance measurement. Please read the

instruction carefully and adjust the instrument prior to the experiment.

- Even the same operator might get different results in two separate experiments. In order to get better reproducible results, the operation of every step in the assay should be controlled. Furthermore, a preliminary experiment before assay for each batch is recommended.
- Each kit has been strictly passed Q.C test. However, results from end users might be inconsistent with our in-house data due to some unexpected transportation conditions or different lab equipments. Intra-assay variance among kits from different batches might arise from above factors, too.
- Kits from different manufacturers for the same item might produce different results, since we have not compared our products with other manufacturers.

---

Comment:

The standard curve concentrations used for the ELISAs were 500 pg/mL, 250 pg/mL, 125 pg/mL, 62.5 pg/mL, 31.2 pg/mL, 15.6 pg/mL, 7.8 pg/mL.

Information on standard material:

The standard might be recombinant protein or natural protein, that will depend on the specific kit. Moreover, the expression system is E.coli or yeast or mammal cell. There is 0.05% proclin 300 in the standard as preservative.

Information on reagents:

The stop solution used in the kit is sulfuric acid with concentration of 1 mol/L. And the wash solution is TBS. The standard diluent contains 0.02 % sodium azide, assay diluent A and assay diluent B contain 0.01% sodium azide. Some kits can contain is BSA in them.

Information on antibodies:

The provided antibodies and their host vary in different kits.

---

Sample Volume:

50  $\mu$ L

---

Plate:

Pre-coated

---

Protocol:

The microtiter plate provided in this kit has been pre-coated with an antibody specific to GnRH. Standards or samples are then added to the appropriate microtiter plate wells with a biotin-conjugated polyclonal antibody preparation specific for GnRH.

Next, Avidin conjugated to Horseradish Peroxidase (HRP) is added to each microplate well and incubated.

Then a TMB substrate solution is added to each well. Only those wells that contain GnRH, biotin-conjugated antibody and enzyme-conjugated Avidin will exhibit a change in color.

The enzyme-substrate reaction is terminated by the addition of a sulphuric acid solution and the color change is measured spectrophotometrically at a wavelength of 450 nm  $\pm$  2 nm. The

concentration of GnRH in the samples is then determined by comparing the O.D. of the samples to the standard curve. SUMMARY AND EXPLANATION The vertebrate gonadotropin-releasing hormone (GnRH) is a decapeptide involved in regulating reproduction. FSH and LH are secreted by the basophilic cells of the anterior pituitary in response to the Gonadotropin-releasing hormone (GnRH) produced by the hypothalamus. The release of GnRH from the hypothalamus regulates the production of gonadotropins in the pituitary and these gonadotropins are responsible for gonadal development and growth in vertebrates. In addition to the hypothalamic GnRH (also called GnRH1 or GnRH-I), many vertebrate species have been found to express other GnRH forms. These include a midbrain GnRH (called GnRH-II or GnRH2) and a telencephalic GnRH (called GnRH-III or GnRH3). The function of these non-hypothalamic forms remains unclear.

---

### Sample Collection:

**Serum:** Allow samples to clot for two hours at room temperature or overnight at 4°C before centrifugation for 20 minutes at approximately 1000 × g. Assay immediately or store samples in aliquot at -20°C or -80°C. Avoid repeated freeze/thaw cycles.

**Plasma:** Collect plasma using EDTA or heparin as an anticoagulant. Centrifuge samples for 15 minutes at 1000 × g within 30 minutes of collection. Remove plasma and assay immediately or store samples in aliquot at -20°C or -80°C. Avoid repeated freeze/thaw cycles.

**Biological Fluids:** Centrifuge samples for 20 minutes at 1000 × g. Remove particulates and assay immediately or store samples in aliquot at -20 °C or -80 °C for later use. Avoid repeated freeze/thaw cycles.

---

### Sample Preparation:

#### **Notes:**

- The user should calculate the possible amount of the samples used in the whole test. Please reserve sufficient samples in advance.
- Please predict the concentration before assaying. If values for these are not within the range of the standard curve, users must determine the optimal sample dilutions for their particular experiments.
- If the samples are not indicated in the manual, a preliminary experiment to determine the validity of the kit is necessary.
- Tissue or cell extraction samples prepared by chemical lysis buffer may cause unexpected ELISA results due to the impacts from certain chemicals.
- Due to the possibility of mismatching between antigen from other origin and antibody used in our kits (e.g., antibody targets conformational epitope rather than linear epitope), some native or recombinant proteins from other manufacturers may not be recognized by our products.
- Influenced by the factors including cell viability, cell number or sampling time, samples from cell culture supernatant may not be detected by the kit.

- Fresh samples without long time storage is recommended for the test. Otherwise, protein degradation and denaturalization may occur in those samples and finally lead to wrong results.

### Assay Procedure:

- 1. Determine wells for diluted standard, blank and sample. Prepare wells for standard points, 1 well for blank. Add dilutions of standard (read Reagent Preparation), blank and samples into the appropriate wells, respectively. You might now need to incubate at 37 °C. And then add Detection Reagent A to each well. You might need to incubate at 37 °C again.
- 2. Aspirate the solution and wash with 350 µL of 1X Wash Solution to each well using a squirt bottle, multi-channel pipette, manifold dispenser or autowasher, and let it sit for 1-2 minutes. Remove the remaining liquid from all wells completely by snapping the plate onto absorbent paper. Repeat 3 times. After the last wash, remove any remaining Wash Buffer by aspirating or decanting. Invert the plate and blot it against absorbent paper.
- 3. Add 100 µL of Detection Reagent B working solution to each well. Incubate for 30 minutes at 37 °C after covering it with the Plate sealer.
- 4. Repeat the aspiration/wash process for total 5 times as conducted in step 2.
- 5. Add 90 µL of Substrate Solution to each well. Cover with a new Plate sealer. Incubate for 15 - 25 minutes at 37 °C (Don't exceed 30 minutes). Protect from light. The liquid will turn blue by the addition of Substrate Solution.
- 6. Add 50 µL of Stop Solution to each well. The liquid will turn yellow by the addition of Stop solution. Mix the liquid by tapping the side of the plate. If color change does not appear uniform, gently tap the plate to ensure thorough mixing.
- 7. Remove any drop of water and fingerprint on the bottom of the plate and confirm there is no bubble on the surface of the liquid. Then, run the microplate reader and conduct measurement at 450 nm immediately.

### Note:

- 1. Assay preparation: Keep appropriate numbers of wells for each experiment and remove extra wells from microplate. Rest wells should be resealed and stored at -20 °C.
- 2. Samples or reagents addition: Please use the freshly prepared Standard. Please carefully add samples to wells and mix gently to avoid foaming. Do not touch the well wall. For each step in the procedure, total dispensing time for addition of reagents or samples to the assay plate should not exceed 10 minutes. This will ensure equal elapsed time for each pipetting step, without interruption. To avoid cross-contamination, change pipette tips between additions of standards, samples, and reagents. Also, use separated reservoirs for each reagent.
- 3. Incubation: To ensure accurate results, proper adhesion of plate sealers during incubation steps is necessary. Do not allow wells to sit uncovered for extended periods between incubation steps. Once reagents are added to the well strips, DO NOT let the strips DRY at any time during the assay. Incubation time and temperature must be controlled.
- 4. Washing: The wash procedure is critical. Complete removal of liquid at each step is essential for good performance. After the last wash, remove any remaining Wash Solution by aspirating or decanting and remove any drop of water and fingerprint on the bottom of the plate. Insufficient washing will result in poor precision and false elevated absorbance

## Application Details

---

reading.

- 5. Controlling of reaction time: Observe the change of color after adding TMB Substrate (e.g. observation once every 10 minutes), if the color is too deep, add Stop Solution in advance to avoid excessively strong reaction which will result in inaccurate absorbance reading.
- 6. TMB Substrate is easily contaminated. Please protect it from light.
- 7. The environment humidity which is less than 60 % might have some effects on the final performance, therefore, a humidifier is recommended to be used at that condition.

---

Calculation of Results:

Average the duplicate readings for each standard, control, and samples and subtract the average zero standard optical density. Construct a standard curve by plotting the mean O.D. and concentration for each standard and draw a best fit curve through the points on the graph or create a standard curve on log-log graph paper with the target concentration on the y-axis and absorbance on the x-axis. Draw the best fit straight line through the standard points and it can be determined by regression analysis. Using some plot software, for instance, curve expert 1.30, is also recommended. If samples have been diluted, the concentration read from the standard curve must be multiplied by the dilution factor.

---

Assay Precision:

**Intra-assay Precision (precision within an assay):** Three samples with low, medium and high levels of the target antigen were tested twenty times on one plate, respectively.

**Inter-assay Precision (precision between assays):** Three samples with low, medium and high levels of the target antigen were tested on three different plates, eight replicates in each plate.

**CV (%) = SD/mean X 100**

- Intra-assay: CV less than 10 %
- Inter-assay: CV less than 12 %

---

Restrictions:

For Research Use only

## Handling

---

Precaution of Use:

The Stop Solution suggested for use with this kit is an acid solution. Wear eye, hand, face, and clothing protection when using this material.

---

Handling Advice:

To minimize extra influence on the performance, operation procedures and lab conditions, especially room temperature, air humidity, incubator temperature should be strictly controlled. It is also strongly suggested that the whole assay is performed by the same operator from the beginning to the end.

---

Storage:

4 °C/-20 °C

---

Storage Comment:

- For unopened kit: All the reagents should be kept according to the labels on vials. The Standard, Detection Reagent A, Detection Reagent B and the 96-well strip plate should be

## Handling

---

stored at -20°C upon receipt while the others should be at 4°C.

- For opened kit: When the kit is opened, the remaining reagents still need to be stored according to the above storage condition. Besides, please return the unused wells to the foil pouch containing the desiccant pack, and reseal along entire edge of zip-seal.

Note: It is highly recommended to use the remaining reagents within 1 month provided this is within the expiration date of the kit.

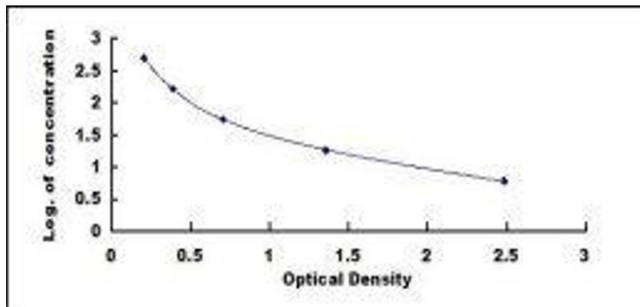
- For ELISA kit, 1 day storage at 37°C can be considered as 2 months at 4°C, which means 3 days at 37°C equaling 6 months at 4°C.

---

Expiry Date: 6 months

## Images

---



### ELISA

Image 1.