

Datasheet for ABIN4369824
anti-Chordin antibody (C-Term)[Go to Product page](#)

2 Images

2 Publications

Overview

Quantity:	400 µL
Target:	Chordin (CHRD)
Binding Specificity:	C-Term
Reactivity:	Human
Host:	Rabbit
Clonality:	Polyclonal
Conjugate:	This Chordin antibody is un-conjugated
Application:	Western Blotting (WB), Immunohistochemistry (Paraffin-embedded Sections) (IHC (p))

Product Details

Purpose:	Rabbit polyclonal antibody raised against synthetic peptide of CHRD.
Immunogen:	A synthetic peptide (conjugated with KLH) corresponding to C-terminus of human CHRD.
Cross-Reactivity:	Human

Target Details

Target:	Chordin (CHRD)
Alternative Name:	Chordin (CHRD Products)
Gene ID:	8646

Application Details

Application Notes:	Western Blot (1:1000) Immunohistochemistry (1:10-50) The optimal working dilution should be determined by the end user.
--------------------	---

Restrictions:	For Research Use only
---------------	-----------------------

Handling

Format:	Liquid
---------	--------

Buffer:	In PBS (0.09 % sodium azide)
---------	------------------------------

Preservative:	Sodium azide
---------------	--------------

Precaution of Use:	This product contains Sodium azide: a POISONOUS AND HAZARDOUS SUBSTANCE which should be handled by trained staff only.
--------------------	--

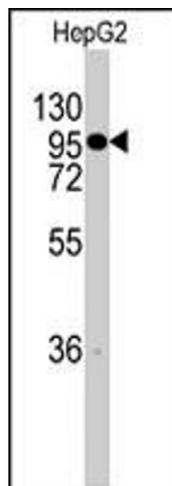
Storage:	4 °C,-20 °C
----------	-------------

Storage Comment:	Store at 4°C. For long term storage store at -20°C. Aliquot to avoid repeated freezing and thawing.
------------------	--

Publications

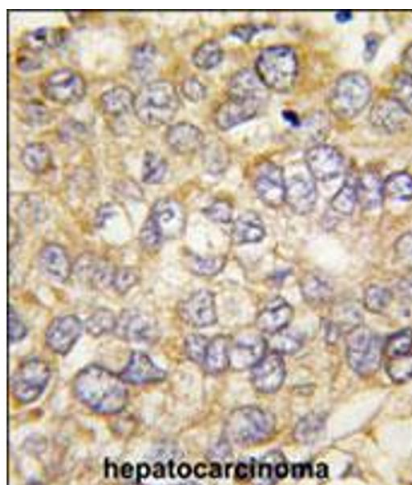
Product cited in:	Moll, Millet, Noël, Orsetti, Bardin, Katsaros, Jorgensen, Garcia, Theillet, Pujol, François: "Chordin is underexpressed in ovarian tumors and reduces tumor cell motility." in: FASEB journal : official publication of the Federation of American Societies for Experimental Biology , Vol. 20, Issue 2, pp. 240-50, (2006) (PubMed).
-------------------	---

Lim, Hao, Shaw, Patel, Szabó, Rual, Fisk, Li, Smolyar, Hill, Barabási, Vidal, Zoghbi: "A protein-protein interaction network for human inherited ataxias and disorders of Purkinje cell degeneration." in: **Cell**, Vol. 125, Issue 4, pp. 801-14, (2006) ([PubMed](#)).



Western Blotting

Image 1. Western blot analysis of CHRD polyclonal antibody in HepG2 cell line lysates (35 ug/lane). CHRD (arrow) was detected using the purified polyclonal antibody.



Immunohistochemistry

Image 2. Formalin-fixed and paraffin-embedded human hepatocellular carcinoma reacted with CHRD polyclonal antibody, which was peroxidase-conjugated to the secondary antibody, followed by DAB staining. This data demonstrates the use of this antibody for immunohistochemistry; clinical relevance has not been evaluated.