

Datasheet for ABIN4369832
anti-FDFT1 antibody (N-Term)[Go to Product page](#)

2 Images

1 Publication

Overview

Quantity:	400 µL
Target:	FDFT1
Binding Specificity:	N-Term
Reactivity:	Human, Mouse
Host:	Rabbit
Clonality:	Polyclonal
Conjugate:	This FDFT1 antibody is un-conjugated
Application:	Western Blotting (WB), ELISA, Immunohistochemistry (Paraffin-embedded Sections) (IHC (p))

Product Details

Purpose:	Rabbit polyclonal antibody raised against synthetic peptide of FDFT1.
Immunogen:	A synthetic peptide (conjugated with KLH) corresponding to N-terminus of human FDFT1.
Cross-Reactivity:	Human, Mouse

Target Details

Target:	FDFT1
Alternative Name:	Squalene synthetase (FDFT1 Products)
Gene ID:	2222
Pathways:	Regulation of Lipid Metabolism by PPARalpha

Application Details

Application Notes:	ELISA (1:1000) Western Blot (1:100-500) Immunohistochemistry (1:50-100) The optimal working dilution should be determined by the end user.
--------------------	---

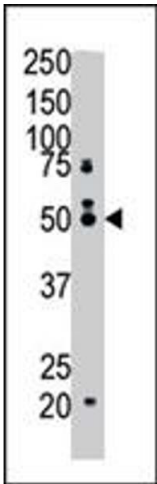
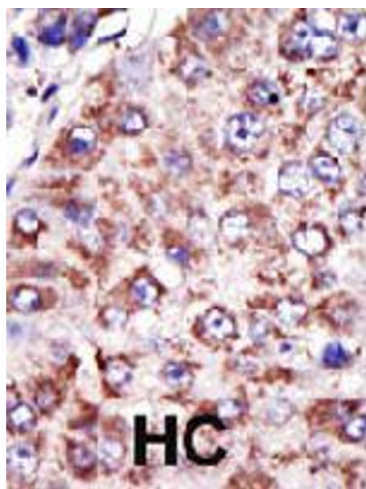
Restrictions:	For Research Use only
---------------	-----------------------

Handling

Format:	Liquid
Buffer:	In PBS (0.09 % sodium azide)
Preservative:	Sodium azide
Precaution of Use:	This product contains Sodium azide: a POISONOUS AND HAZARDOUS SUBSTANCE which should be handled by trained staff only.
Storage:	4 °C, -20 °C
Storage Comment:	Store at 4°C. For long term storage store at -20°C. Aliquot to avoid repeated freezing and thawing.

Publications

Product cited in:	Strausberg, Feingold, Grouse, Derge, Klausner, Collins, Wagner, Shenmen, Schuler, Altschul, Zeeberg, Buetow, Schaefer, Bhat, Hopkins, Jordan, Moore, Max, Wang, Hsieh, Diatchenko, Marusina, Farmer et al.: "Generation and initial analysis of more than 15,000 full-length human and mouse cDNA sequences. ..." in: Proceedings of the National Academy of Sciences of the United States of America , Vol. 99, Issue 26, pp. 16899-903, (2002) (PubMed).
-------------------	---



Immunohistochemistry

Image 1. Formalin-fixed and paraffin-embedded human hepatocellular carcinoma tissue reacted with FDFT1 polyclonal antibody , which was peroxidase-conjugated to the secondary antibody, followed by DAB staining . This data demonstrates the use of this antibody for immunohistochemistry; clinical relevance has not been evaluated . HC = hepatocarcinoma .

Western Blotting

Image 2. The FDFT1 polyclonal antibody is used in Western blot to detect FDFT1 in mouse cerebellum tissue lysate .