

Datasheet for ABIN4369863

CTLA4 Protein (AA 37-161) (His-DYKDDDDK-Strep II Tag)



[Go to Product page](#)

2 Images

Overview

Quantity:	2 µg
Target:	CTLA4
Protein Characteristics:	AA 37-161
Origin:	Human
Source:	HEK-293T Cells
Protein Type:	Recombinant
Purification tag / Conjugate:	This CTLA4 protein is labelled with His-DYKDDDDK-Strep II Tag.
Application:	Western Blotting (WB), SDS-PAGE (SDS), ELISA, Protein Interaction (PI)

Product Details

Purpose:	CTLA4 (Human) Recombinant Protein
Sequence:	AMHVAQPAVV LASSRGIASF VCEYASPGKA TEVRVTVLRQ ADSQVTEVCA ATYMMGNELT FLDDSICTGT SSGNQVNLT I QGLRAMDTGL YICKVELMYP PPYYLGIGNG TQIYVIDPEP CPDSD
Characteristics:	Purified CTLA4 (AAH74842.1, 37 a.a. - 161 a.a.) human recombinant protein with His-Flag-StrepII tag at N-terminus expressed in human cells.
Purification:	Transfection of pSuper-CTLA4 plasmid into HEK293T cell, and the expressed protein was purified by Strep-Tactin affinity column.

Target Details

Target:	CTLA4
Alternative Name:	CTLA4 (CTLA4 Products)

Target Details

Background: Gene: cytotoxic T-lymphocyte-associated protein 4
Synonyms: CD152, CELIAC3, CTLA-4, GSE, IDDM12

Gene ID: 1493

Pathways: [Cancer Immune Checkpoints](#)

Application Details

Application Notes: Optimal working dilution should be determined by the investigator.

Restrictions: For Research Use only

Handling

Format: Liquid

Concentration: 10 µg/mL

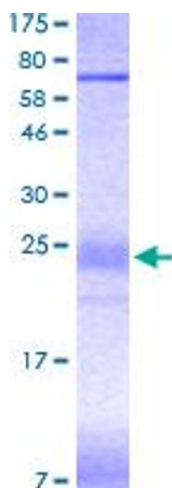
Buffer: 100 mM Tris-HCl pH 8.0, 150 mM NaCl, 1 mM EDTA, and 5 mM desthiobiotin.

Preservative: Other preservative

Handling Advice: Aliquot to avoid repeated freezing and thawing.

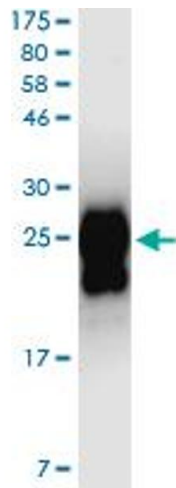
Storage: -80 °C

Images



SDS-PAGE

Image 1.



Western Blotting

Image 2.